

THESE PLANS HAVE BEEN DESIGNED FOR OWNER-BUILDER USE.

BBD ENGINEERING & DESIGN FIRM, LLC
 CMA 30468
 KENY M. BIRD, P.E., P.F.
 NO. 50424, STATE OF FLORIDA
 1552 8TH STREET, S.E.
 WYLLI (863) 875-5600

ENGINEER SEAL
 THIS DOCUMENT HAS BEEN DIGITALLY SIGNED & SEALED IN ACCORDANCE WITH 61G15-23.004(6) F.A.C. WHEN THE ENGINEER'S SEAL IS VISIBLE ON THE FIRST PAGE.

| DATE | REVISION DESCRIPTION | INITIAL |
|------|----------------------|---------|
| | | |
| | | |
| | | |
| | | |

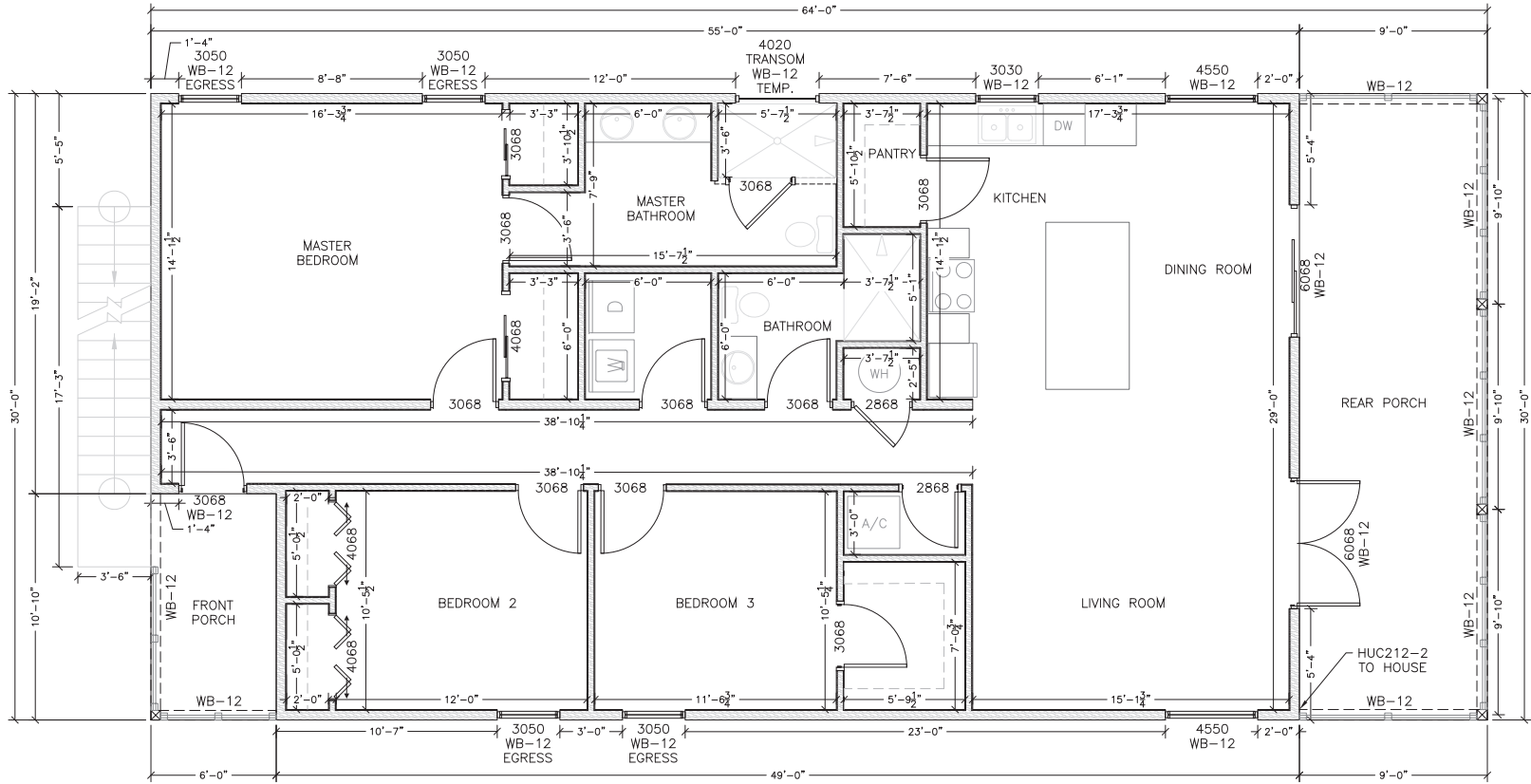


CUSTOMER: MODEL C
 PARCEL #:
 ADDRESS:

FIRST LEVEL FLOOR PLAN

PAGE 03 OF --

DRAWN BY: LWS SCALE: 1/8" = 1'-0"
 CHECKED BY: SAVED DATE: 3/20/2024 03:39



THESE PLANS HAVE BEEN DESIGNED FOR OWNER-BUILDER USE.

BBD ENGINEERING & DESIGN FIRM, LLC
 CMA 30468
 PERRY M. BIRD, P.E., P.F.C.
 NO. 50424, STATE OF FLORIDA
 15502 8TH STREET, S.E.
 WINDY HILL, FL 32086
 (904) 875-5602

ENGINEER SEAL
 THIS DOCUMENT HAS BEEN DIGITALLY SIGNED & SEALED IN ACCORDANCE WITH 61G15-23.004(6) F.A.C. WHEN THE ENGINEER'S SEAL IS VISIBLE ON THE FIRST PAGE.

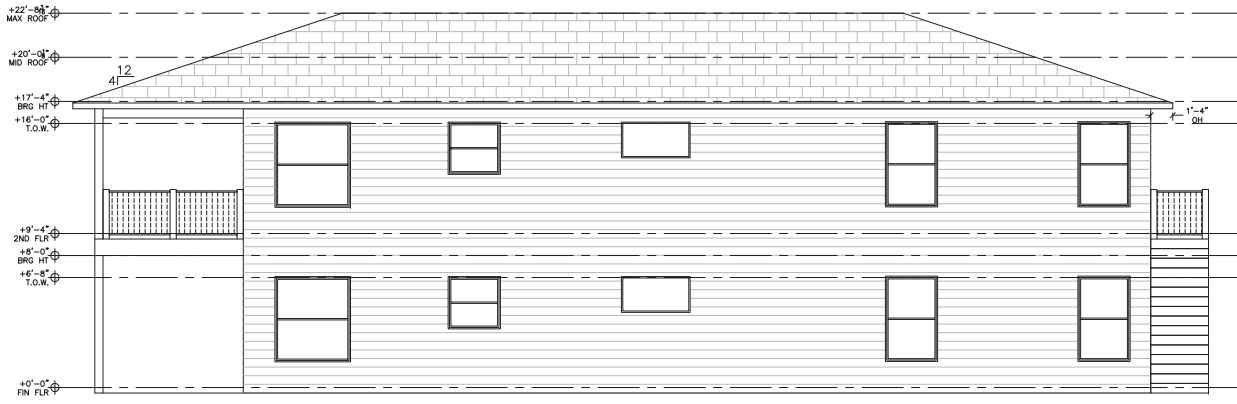
| INITIAL | REVISION DESCRIPTION | DATE |
|---------|----------------------|------|
| | | |
| | | |
| | | |



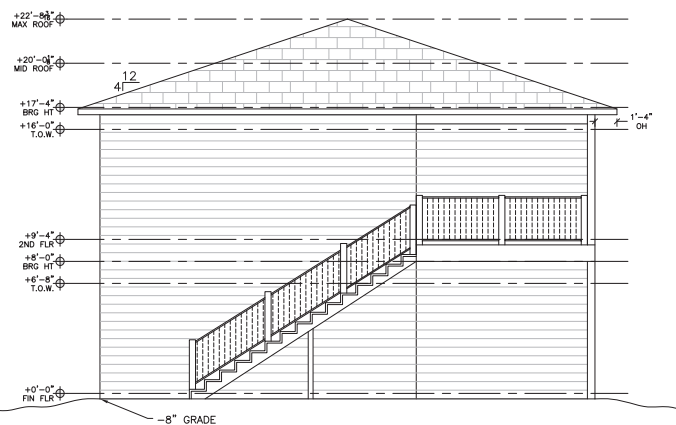
CUSTOMER: **MODEL C**
 PARCEL #: :
 ADDRESS: :
 :
 :

SECOND LEVEL FLOOR PLAN

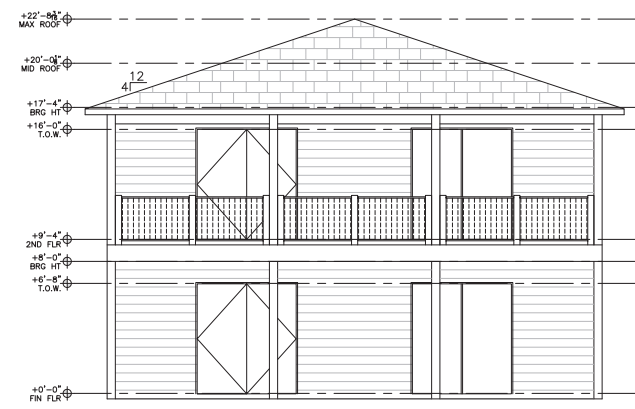
PAGE: **04** OF **--**
 DRAWN BY: **LWS** SCALE: 1/8" = 1'-0"
 CHECKED BY: SAVED DATE: 3/20/2024 03:39



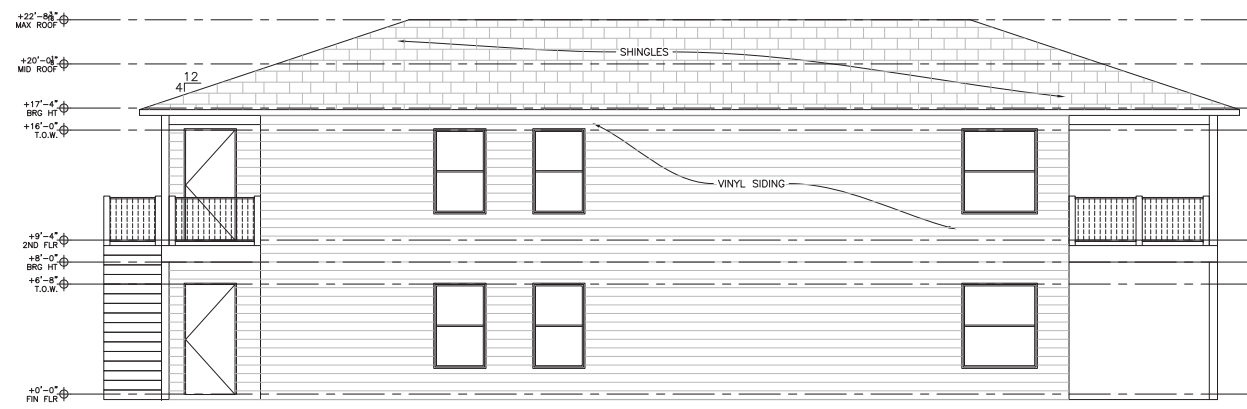
LEFT VIEW
SCALE: 3/16"=1'-0"



FRONT VIEW
SCALE: 3/16"=1'-0"



REAR VIEW
SCALE: 3/16"=1'-0"



RIGHT VIEW
SCALE: 3/16"=1'-0"

THESE PLANS HAVE BEEN DESIGNED FOR OWNER-BUILDER USE.

BBD ENGINEERING & DESIGN FIRM, LLC
 CFW 30468
 KENY M. BIRD, P.E., P.F.
 NO. 50424, STATE OF FLORIDA
 1552 8TH STREET S.E.
 WY11 (863) 875-5602

ENGINEER SEAL
 THIS DOCUMENT HAS BEEN DIGITALLY SIGNED & SEALED IN ACCORDANCE WITH 61G15-23.004(c) F.A.C. WHEN THE ENGINEER'S SEAL IS VISIBLE ON THE FIRST PAGE.

| INITIAL | REVISION DESCRIPTION | DATE |
|---------|----------------------|------|
| | | |
| | | |
| | | |
| | | |
| | | |

HOLMES DRAFTING SERVICES, LLC
 4542 COMMERCIAL WAY
 SPRING HILL, FL
 (352) 701-2637

CUSTOMER: MODEL C
 PARCEL #:
 ADDRESS:

ELEVATIONS
 PAGE 05 OF --
 DRAWN BY: LWS
 CHECKED BY: MSH
 SCALE: AS SHOWN
 SAVE DATE: 3/20/2024 03:39

HOLMES DRAFTING SERVICES, LLC EXPRESSLY RESERVES THE EXCLUSIVE COMMON LAW COPYRIGHT AND PROPERTY RIGHTS TO THESE DRAWINGS WHICH MAY NOT BE REPRODUCED, CHANGED OR COPIED IN ANY FORM OR MANNER, NOR ARE THEY TO BE ASSIGNED TO ANY PARTY WITHOUT WRITTEN CONSENT.

FILE LOCATION: C:\USERS\LUCASSMITH\3D\NOLOGY_PROJECTS\HABITATFORHUMANITY\DUPLICATE