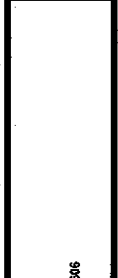
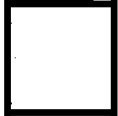


REVISIONS	BY

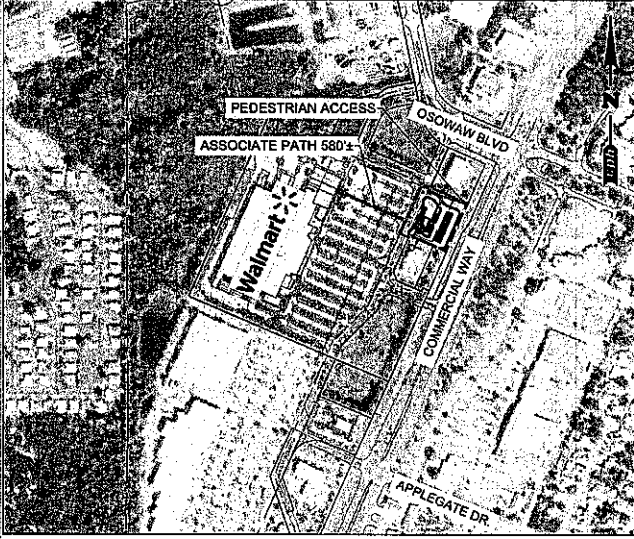
500 WEST PALM TOR STREET  
 DAVENPORT, FL 33711  
 PH: 407.237.1441



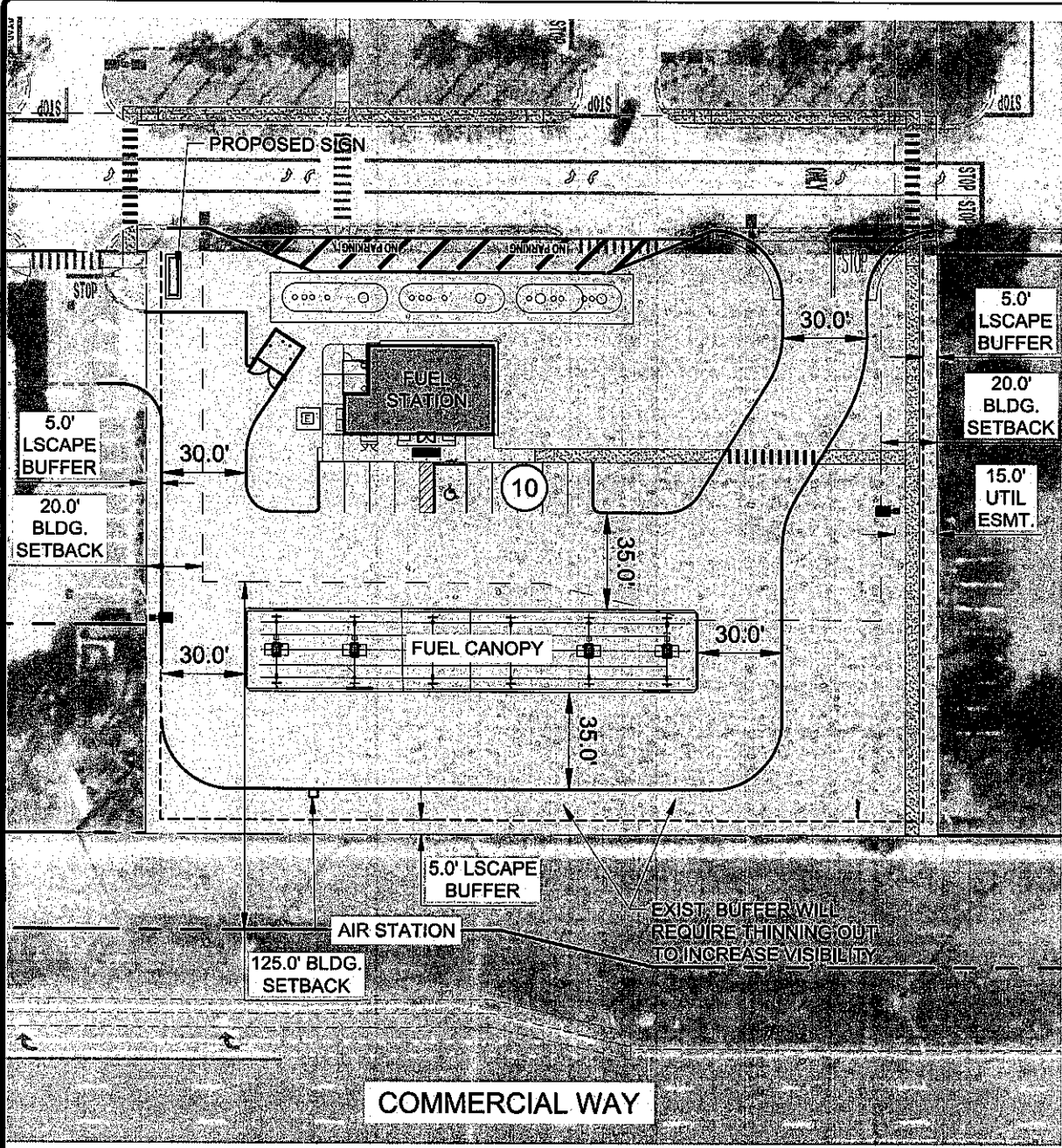
STORE #967  
 WAL-MART STORES, INC.  
 1485 COMMERCIAL WAY  
 SPRING HILL, FLORIDA 34606



DATE:  
 09/08/25  
 Conceptual  
 PLAN

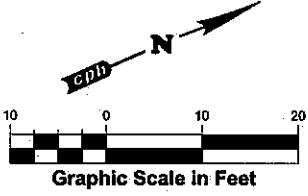


OVERALL SITE  
 SCALE 1"=1000'



FUEL STATION  
 SCALE 1"=60'

BUILDING, CANOPY & TANKS  
 1,618 SQFT BUILDING - 6 PUMPS IN LINE  
 (3) 20,000 GALLON TANKS  
 NO WETLANDS, FLOODZONE X  
 BUILDING HEIGHT = 18'-0"  
 CANOPY HEIGHT = 17'-8"



**SITE ANALYSIS TABLE**

FUEL STATION: 1485 COMMERCIAL WAY, SPRING HILL, FL		
CURRENT ZONE:	PDP	
EXISTING WALAMRT PARCEL AREA:	30.14 AC	
EXISTING WALAMRT STORE AREA:	217,584 SF	
	PARKING COUNT	PARKING RATIO
EXISTING PARKING W/O PICKUP	943 SPACES	4.33 / 1000 SF
EXISTING PARKING W/ PICKUP	961 SPACES	4.42 / 1000 SF
PROPOSED PARKING W/O PICKUP	857 SPACES	3.94 / 1000 SF
PROPOSED PARKING W/ PICKUP	885 SPACES	4.07 / 1000 SF
AGENCY REQ. PARKING	871 SPACES	4.00 / 1000 SF
WALMART REQ. PARKING	871 SPACES	4.00 / 1000 SF
FUEL STATION STORE AREA	1,618 SF	
EXISTING WALMART FUEL PARCEL AREA	NA	
PROPOSED WALMART FUEL PARCEL AREA	1.36+/- AC	
	PARKING COUNT	PARKING RATIO
PROPOSED PARKING	10 SPACES	6.8 / 1000 SF
CITY REQ. PARKING	7 SPACES	4.0 / 1000 SF
WALMART REQ. PARKING	5 SPACES	1 / 375 SF
	BUILDING SETBACK	LANDSCAPE BUFFER
FRONT	125'	5'
REAR	35'	5'
SIDE	20'	5'
SIDE	20'	5'

12.3.2025: dmp Dec 03, 2025 - 1:44pm mss lenoche  
 123500192(C:\HD\WG\Concepts\Recon\0927\_Spring Hill, FL - WMA\12.3.2025.dwg  
 12.3.2025: dmp Dec 03, 2025 - 1:44pm mss lenoche