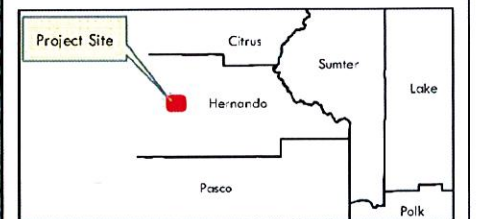


Legend

- Crystal Waters - 128.5 ± Acres
- 2017 SWFWMD FLUCCS**
- Water Features
- Wetland Features
- Parcel Boundary

Vicinity Map



S: 13 T: 22 R: 17

Notes:

Clearview Land Design, or SWFWMD make no warranty, representation or guaranty as to the content, sequence, accuracy, timeliness, or completeness of any of the geodata information provided herein. Aerial: SWFWMD, 2020
 Service Layer Credits: Sources: Esri, HERE, Garmin, USGS, Intermap, INCREMENT P, NRCan, Esri Japan, METI, Esri China (Hong Kong), Esri Korea, Esri (Thailand), NGCC, (c) OpenStreetMap contributors, and the GIS User Community



1 inch = 700 feet

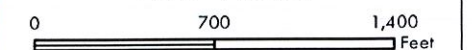


Figure: SWFWMD FLUCCS Wetlands Map

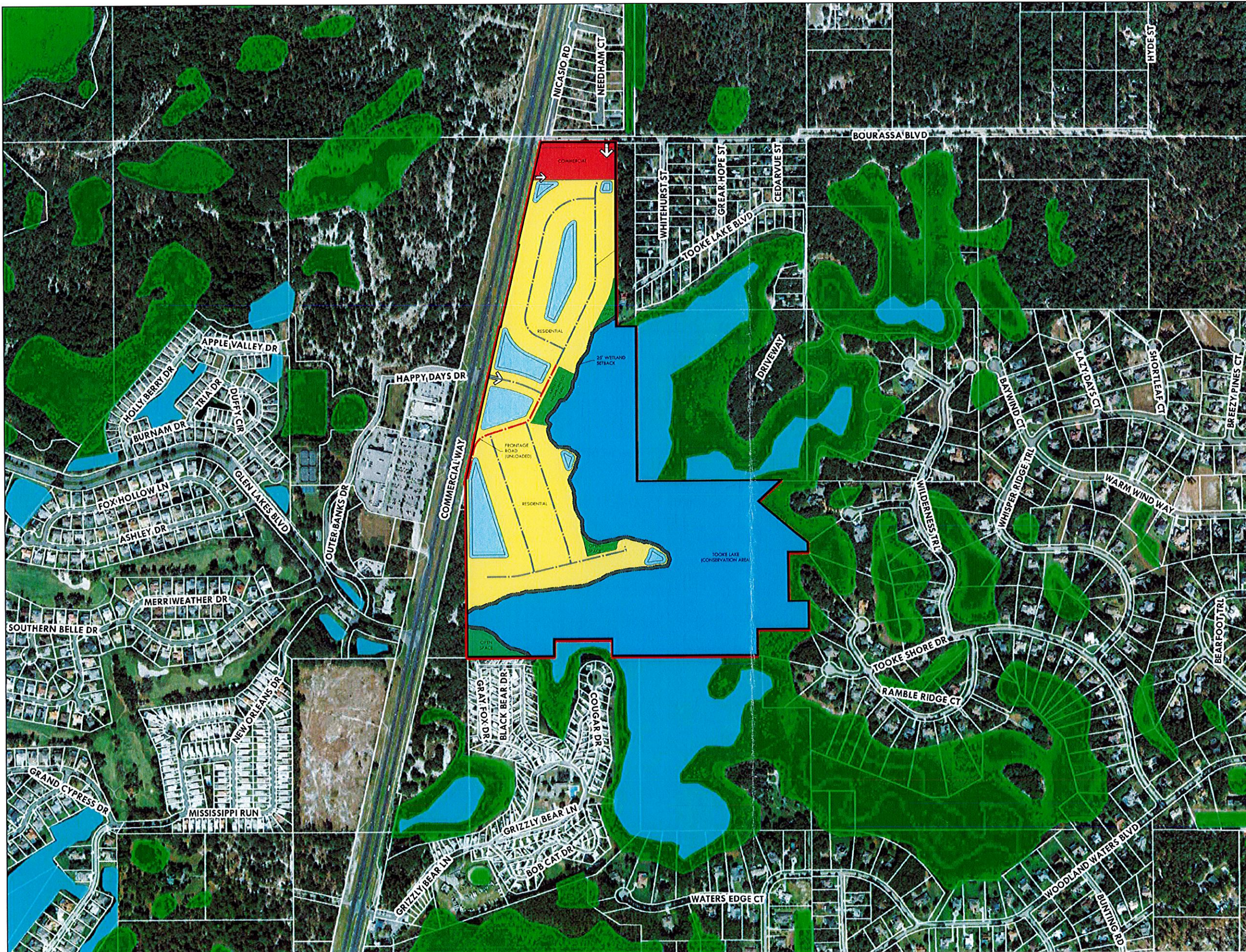
Project: Crystal Waters

Hernando County

Filename:
 CW Wetlands 20220822 11x17 wcs

Map Date:
 8/22/2022

Map Prepared By:
 WCS



SUBMITTED P:Z 11/14/22 HZ251