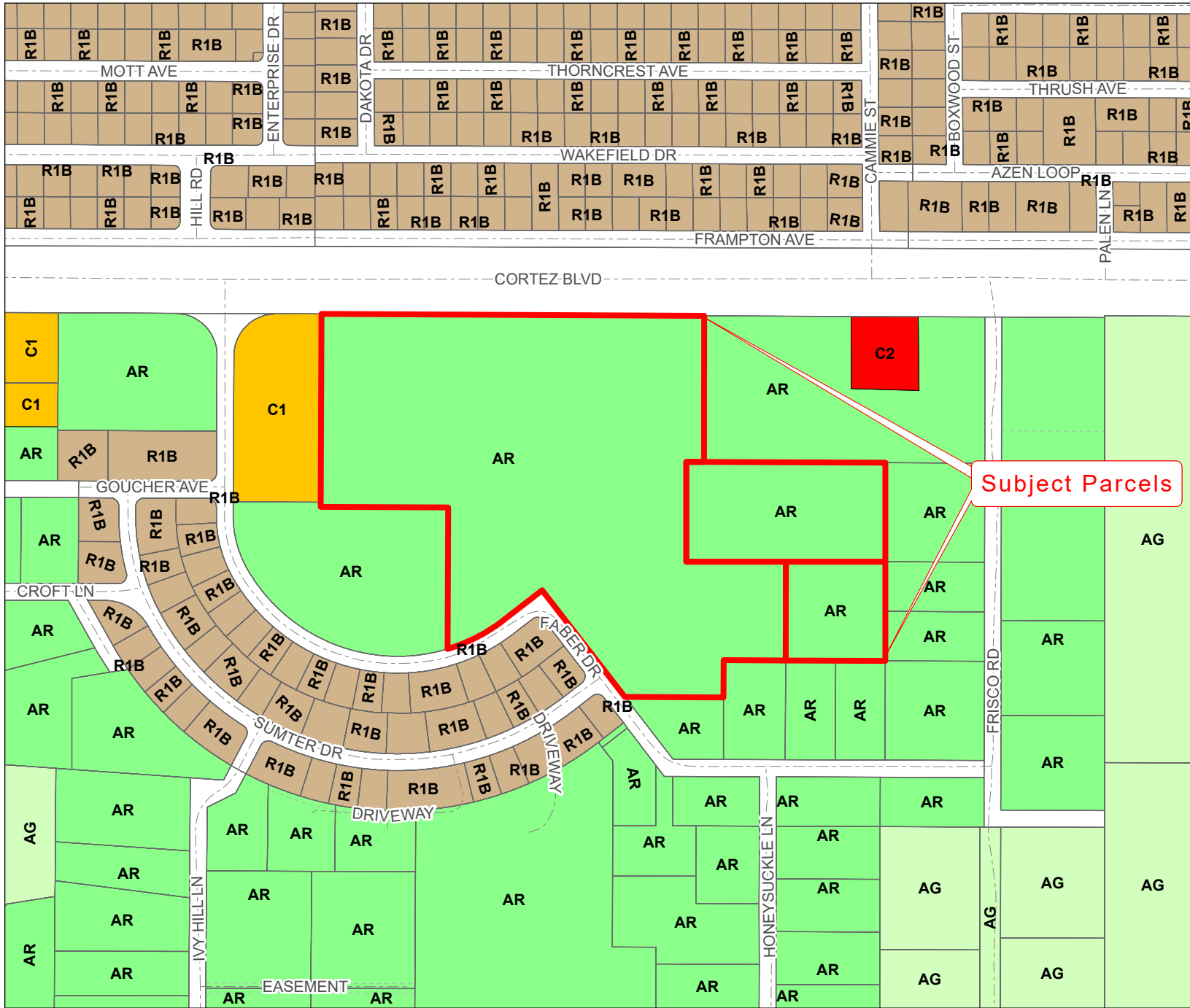


H-22-16

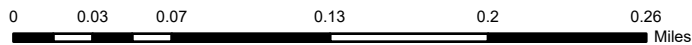
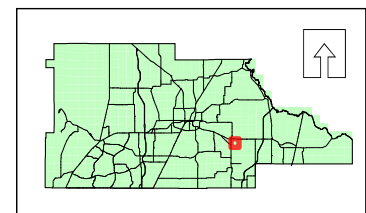
This map was prepared by this office to be used as an aid in land parcel location and identification only. All land locations, right-of-way widths, acreages, and utility locations are subject to field survey or other appropriate verification.



Zoning:

AC	PDP(HC)
AG	PDP(HHC)
AR	PDP(HID)
AR1	PDP(IND)
AR2	PDP(LI)
C1	PDP(MF)
C2	PDP(MH)
C3	PDP(NC)
C4	PDP(OP)
CITY	PDP(PSF)
CM1	PDP(REC)
CM2	PDP(RR)
CPDP	PDP(RUR)
CV	PDP(SF)
I1	PDP(SU)
I2	R1A
M	R1B
OP	R1C
PDP(AF)	R1MH
PDP(CM)	R2
PDP(CP)	R2.5
PDP(GC)	R3
PDP(GHC)	RC
	RM

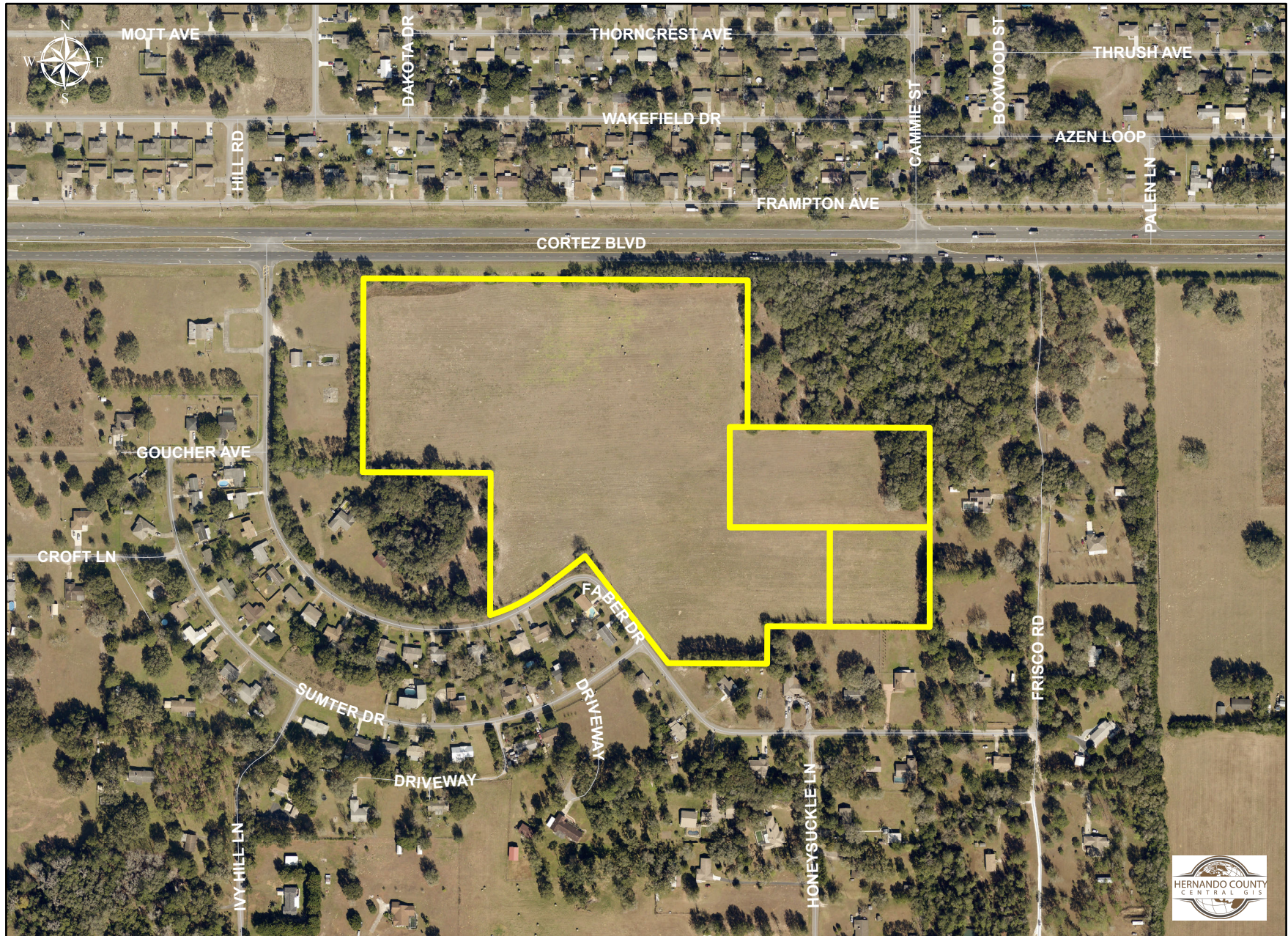
City Zoning Pending



H-22-16

Photo date: 2020

This map was prepared by this office to be used as an aid in land parcel location and identification only. All land locations, right-of-way widths, acreages, and utility locations are subject to field survey or other appropriate verification.



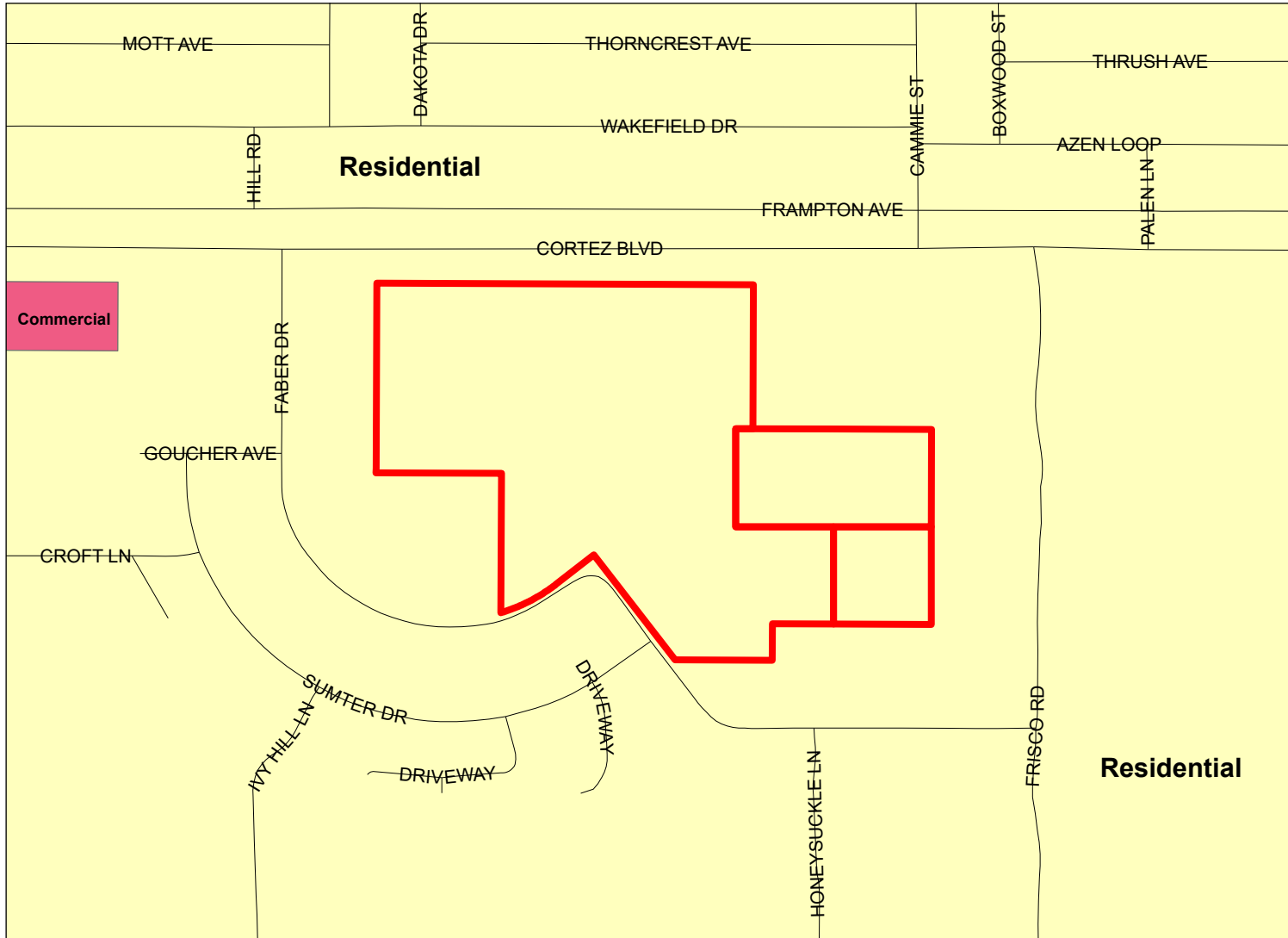
0 0.03 0.07 0.13 0.2 0.26 Miles



Hernando County Comprehensive Plan Map

Existing Future Land Use: H-22-16

Version Date: 01/11/2022



Legend

- H-22-16
- FLU Riverine District
- Regional Commercial

FLU

- CITY
- COMMERCIAL
- CONSERVATION
- EDUCATION
- INDUSTRIAL
- MINING
- PLANNED DEVELOPMENT
- PUBLIC FACILITIES
- RECREATION
- RESIDENTIAL
- RURAL

Future Land Use Map

PLEASE REFER TO THE TEXT PORTION OF THE COMPREHENSIVE PLAN IN CONJUNCTION WITH THE USE OF THE FUTURE LAND USE MAP SERIES.

NOTE: THE RIVERINE DISTRICT IS SHOWN AS A LINE SETBACK PARALLEL TO THE WEEKI WACHEE, MUD AND WITHLACOOCHEE RIVERS.

