

H-26-15 Aerial Map

This map was prepared by this office to be used as aid and land parcel location and identification only. All land locations, right-of-ways widths, acreages, and utility locations are subject to field survey or other appropriate verification.

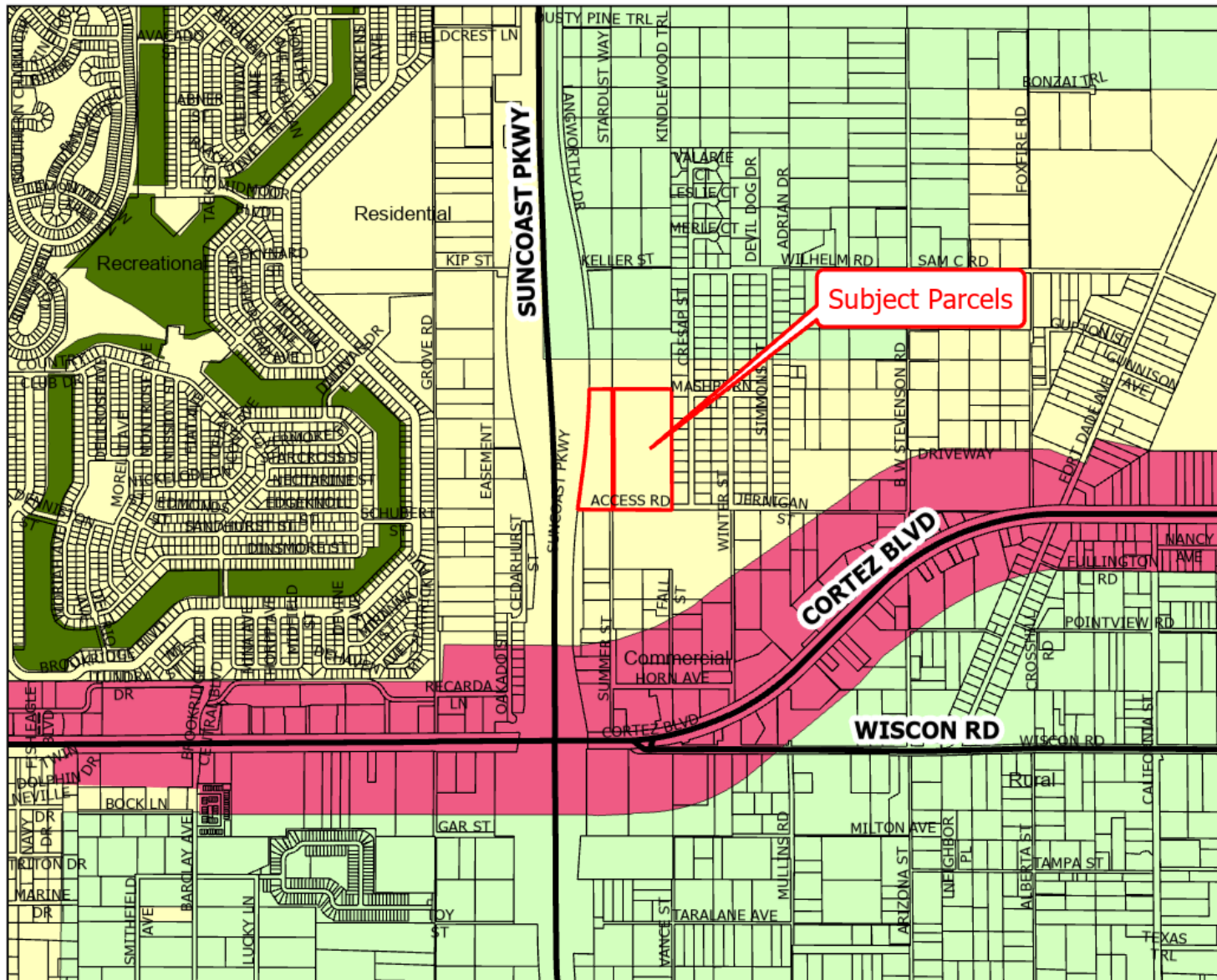


Not to Scale.

Hernando County Comprehensive Plan Map

Existing Future Land Use: H-26-15

Version Date: 5/11/2026



Legend

- Commercial
- Recreational
- Residential
- Rural



Future Land Use Map

PLEASE REFER TO THE TEXT PORTION OF THE COMPREHENSIVE PLAN IN CONJUNCTION WITH THE USE OF THE FUTURE LAND USE MAP SERIES.

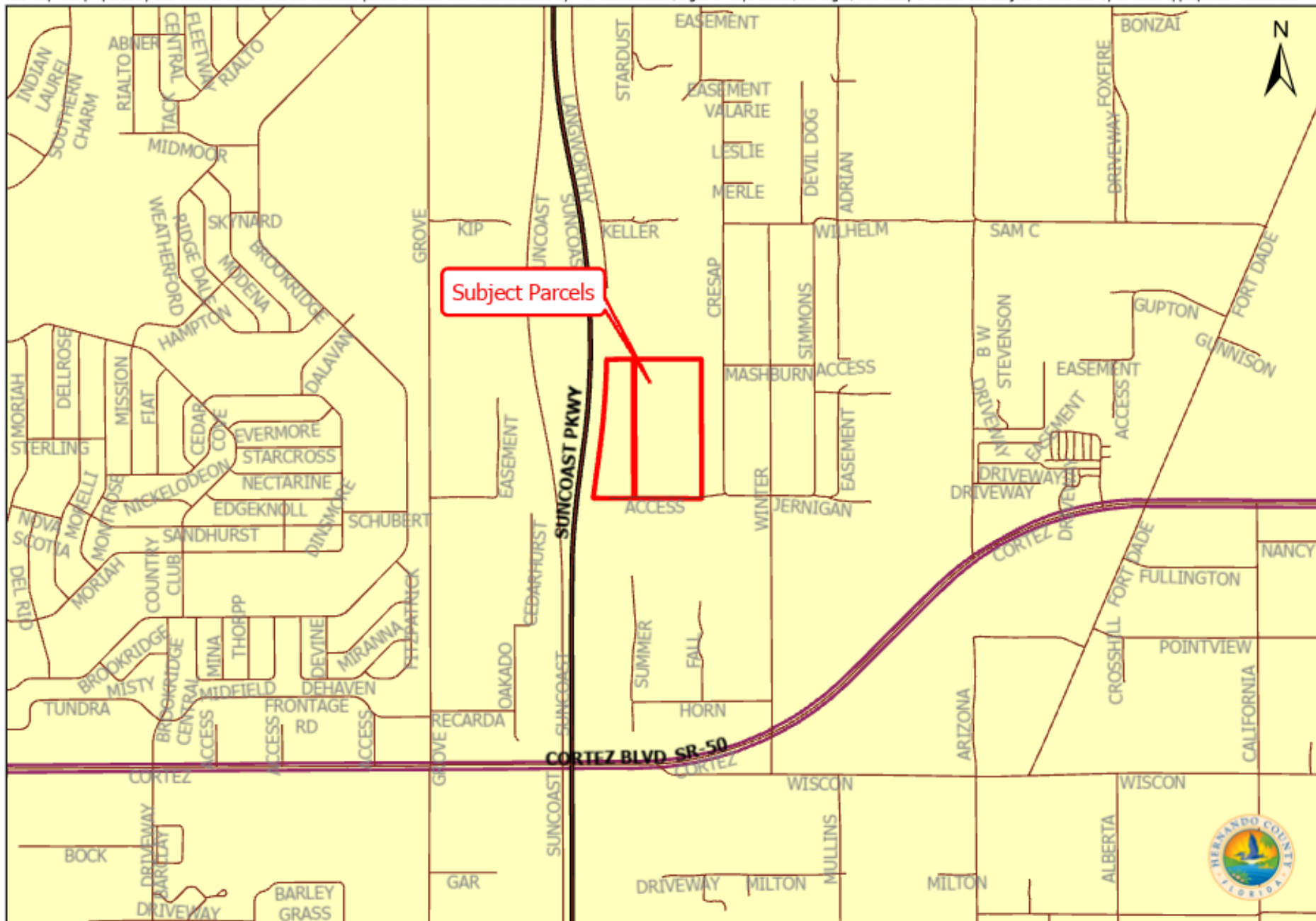
NOTE: THE RIVERINE DISTRICT IS SHOWN AS A LINE SETBACK PARALLEL TO THE WEEKI WACHEE, MUD AND WITHLACOCHEE RIVERS.



Not to Scale.

H-26-15 Area Map

This map was prepared by this office to be used as aid and land parcel location and identification only. All land locations, right-of-ways widths, acreages, and utility locations are subject to field survey or other appropriate verification.



Not to Scale.

H-26-15 Zoning Map

This map was prepared by this office to be used as aid and land parcel location and identification only. All land locations, right-of-ways widths, acreages, and utility locations are subject to field survey or other appropriate verification.

