

A lush green forest with sunlight filtering through the trees. The scene is vibrant and natural, with various shades of green foliage and tree trunks. A semi-transparent green banner is overlaid across the middle of the image, containing text.

Hernando County Florida

**IMPROVING OUR CODE TO  
PROTECT OUR  
NEIGHBORHOODS AND OUR  
NATURAL RESOURCES**



# PROBLEMS WITH THE CURRENT CODE

- Unrealistic Expectations
- Inconsistent Requirements
- Lacks Clarity
- Uncentralized Requirements
- Little Enforcement Ability
- Ignores the Inherent Value of Existing Vegetation
- Lacks Foresight



An aerial photograph showing a complex highway interchange with multiple overpasses and ramps. In the upper right, a large body of water, likely a reservoir or lake, is visible, surrounded by green vegetation. The foreground shows a mix of dry, brownish terrain and some green shrubs. A semi-transparent green rectangular box is overlaid on the left side of the image, containing text.

How can we improve our

# **BUFFER REGULATIONS**



# HOW CAN WE ADDRESS THESE ISSUES?

1

Provide realistic goals and guidance on composition and purpose of buffers

2

Establish consistent requirements across all zones

3

Define terms and create a graphic guide to provide visual guidance

4

Consolidate all buffer requirements into one area of the code

5

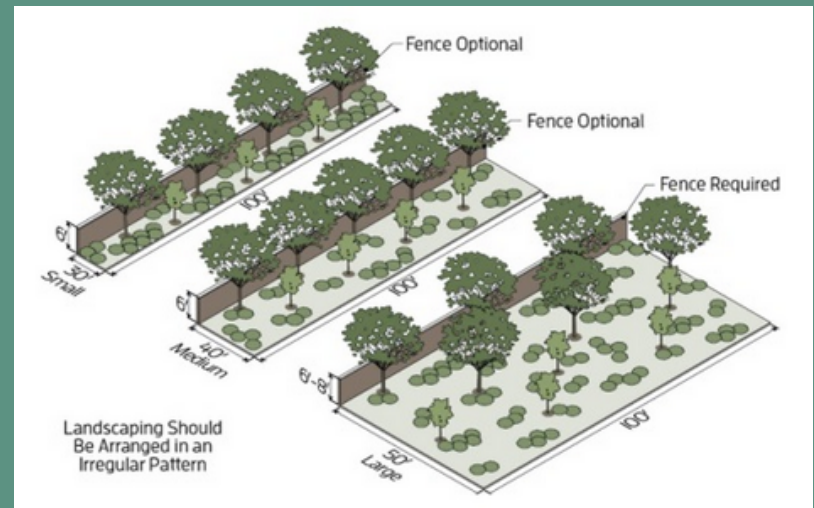
Establish consequences for ignoring the code requirements

6

Create a better balance between the value of existing trees and vegetation and newly planted trees and vegetation.

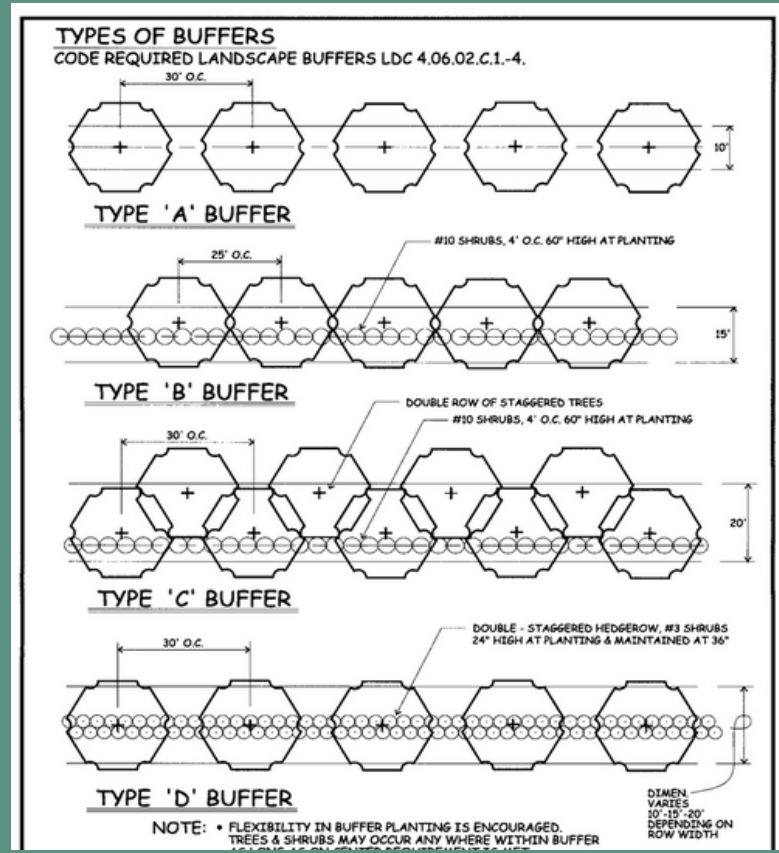
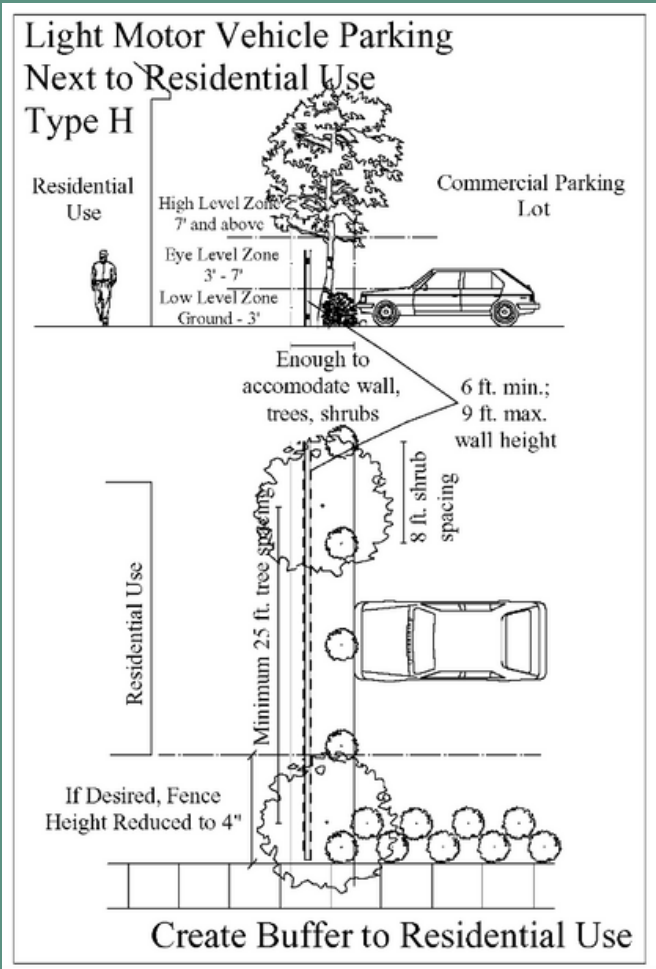
7

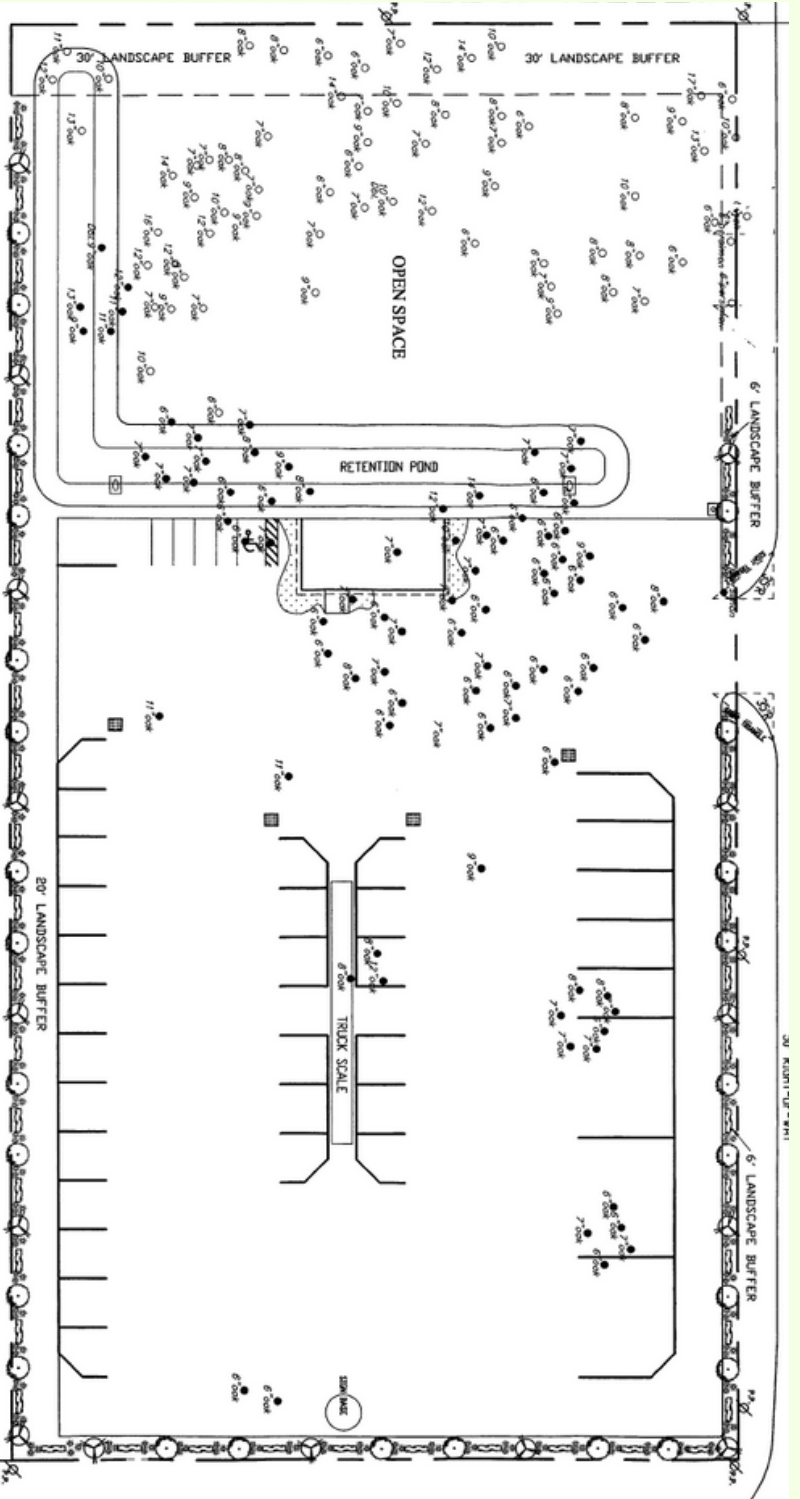
Establish who is responsible for ongoing maintenance and replacement of dead trees and vegetation.



Landscaping Should Be Arranged in an Irregular Pattern

# SAMPLE GRAPHICS













**THANK YOU!**