

Future in Motion

2050 West Central Florida Regional **LONG RANGE TRANSPORTATION PLAN**

Published:
MAY 2025



SCTPA
Sun Coast Transportation Planning Alliance

Planning for Tomorrow

Tampa Bay is growing up. Already among the top 20 most populated regions in the country, the Tampa Bay area is also one of the fastest-growing. Visit any part of the region and you'll experience growth firsthand. Construction is booming in St. Petersburg, Wesley Chapel, Bradenton, Wimauma and many other areas.

We feel it every day as traffic congestion worsens and commutes get longer. With the region's population projected to grow substantially in the coming decades, the need for a forward-thinking plan becomes increasingly clear. The transportation investment decisions we make today will have a direct impact on the future safety, prosperity, health, and happiness of our region's residents, businesses, and visitors.

In Florida, Metropolitan Planning Organizations (MPOs) and Transportation Planning Organizations (TPOs) are responsible for guiding long-range transportation planning in urbanized regions. These organizations serve as a forum where local governments and transportation partners collaborate to develop priorities for roadways, transit, pedestrian and bicycle facilities, and freight movement. In West Central Florida, these efforts are coordinated across counties to support cohesive, multimodal planning that meets the demands of continued population growth and shifting transportation needs.



The Sun Coast Transportation Planning Alliance (SCTPA) supports local, regional and statewide projects that improve access to transportation opportunities in the West Central Florida region. Through the hard work of this collaborative team of transit and transportation-minded individuals, the SCTPA has been successful in these efforts. As the region stands to see continued growth in population, economy and travel, the SCTPA will provide sound, forward-thinking transit and transportation options help promote and sustain this growth.



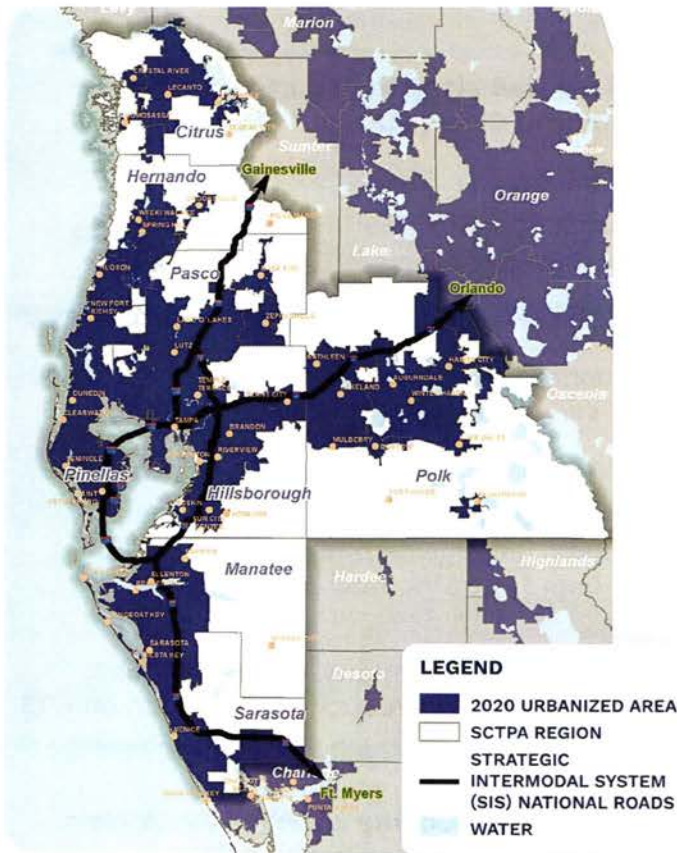


What is a Long Range Transportation Plan?

A Long Range Transportation Plan (LRTP) directs federal and state dollars toward transportation investments we value in our community. It looks out at least 20 years and must be updated every five years. It is based on forecasts of future growth, on analysis of existing and future needs for many types of improvements, and on the opinions and feedback of people in the community. Ultimately, it is adopted by vote of an MPO or TPO governing board at a public hearing.

In recent LRTP updates, the MPOs and TPOs in West Central Florida have focused on:

- Increasing the transportation choices available in the region
- Expanding use of technology & innovative solutions
- Balancing development with environmental preservation
- Using performance measures to prioritize investments



Transportation Planning as a Region

The SCTPA is the longest-standing regional transportation planning compact among MPOs in the State of Florida.

Its members include Hernando/Citrus, Hillsborough, Pasco, Pinellas, Polk, and Sarasota/Manatee Counties. Advisors from the Florida Department of Transportation (FDOT), the Tampa Bay Regional Planning Council (TBRPC), the Pinellas Suncoast Transit Authority (PSTA), and Hillsborough Area Regional Transit (HART) also participate.

Together, the SCTPA members and advisors prepare plans, studies, and priorities for regionally significant projects. They review the impact of major land-use decisions, share current travel data and trends, and adopt regional transportation plans and priorities for highway, public transportation, and Multiuse Trails (MUT) improvements.

6 Census-designated

1,144
Multi-Use Trail Miles

8 Counties

West Central
Florida Region

4,924,263
(Current Population)

29,880
Road Miles

7,036,972
2050 Regional Population

2 FDOT Districts
42.9%
Projected Population Increase

3,429,328
Projected Jobs - 2050

8,000 square miles



History and Major Projects Since 1993

This region has grown tremendously over the past three decades. Since its inception in 1993, the SCTPA has been a strong advocate for better transportation options. As a result, the region has added more roads, pedestrian and cycling paths, and transit facilities. These include new systems, bus stops, vehicles, and amenities that help move people throughout and across the region. We have worked together to provide more safe and reliable options for accessibility, benefiting our residents and visitors and promoting the economic strength of the Sun Coast region.

Highlighted Projects

Courtney Campbell Trail

9.5-mile, scenic, multiuse trail along the Courtney Campbell Causeway, linking Tampa and Clearwater for cyclists and pedestrians

Gateway Expressway

Toll road project in Pinellas County creating elevated express lanes to improve traffic flow between I-275, US-19, and the Bayside Bridge

Tri-County Trail

5-mile, multiuse trail connecting Pinellas, Pasco, and Hillsborough counties, serving as a key link in Florida's Coast-to-Coast Trail

I-275 (Howard Frankland Bridge)

Major Tampa Bay crossing connecting Hillsborough and Pinellas counties, currently undergoing replacement with a new modern bridge to improve traffic flow and safety

I-75 Interchange at Overpass Road

New diamond interchange in Pasco County, opened in 2023, providing improved local access and reducing congestion on I-75

SR 52 Widening from Suncoast Parkway to US 41

Road expansion project in Pasco County widening SR 52 from two to six lanes, improving traffic capacity and safety

I-75 Major Expansions Intersecting with SR 50

Highway widening project to expand I-75 near SR 50, easing congestion and enhancing regional mobility in Hernando County

Suncoast Parkway Extensions

Providing additional regional connections from Tampa in Hillsborough County up to Red Level in Citrus County



Highlighted Regional Efforts & Successes

The SCTPA works together to advance important transportation projects, but also collectively supports policy direction that enhances mobility for the region. By coming together with one voice for the greater region, we work to implement safety improvements, support Florida's Strategic Intermodal System (SIS), prepare for emergency evacuations, and identify common mobility challenges and policy solutions that may be needed including those that are outside of building new transportation facilities.

Highlighted Efforts

Intercity Passenger
Rail on I-4 Resolution

Withlacoochee
State Trail Support

Regional TSM&O
Program (Strategic Plan)

Transportation Regional Incentive
Program (TRIP) List

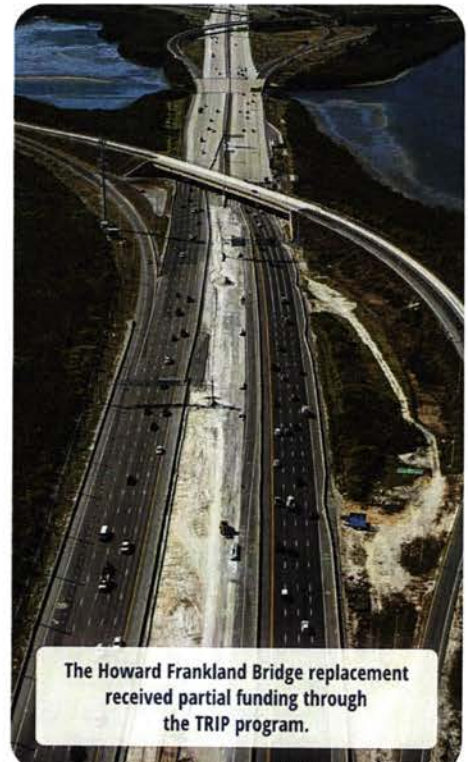
Coast to Coast and Gulf Coast Trail
Support (MUT List)



The SCTPA passed a joint resolution supporting bringing intercity rail to the Tampa Bay region.



Statewide trail connections have been completed because of SCTPA support.



The Howard Frankland Bridge replacement received partial funding through the TRIP program.



Transportation Modes Overview

Bicycles & Pedestrians

The SCTPA has a MUT Subcommittee that meets regularly to collectively prioritize and advocate for the construction of regionally significant multiuse trails. This subcommittee is made up of active transportation planners from local governments and MPOs throughout the region and has been instrumental in documenting the broad support needed to advance multiuse trail projects. Some examples of successful projects include:

- **Withlacoochee State Trail**
46 miles *Citrus, Hernando, and Pasco Counties*
- **Tri-County Trail**
5 miles *Pinellas, Pasco, and Hillsborough Counties*
- **Courtney Campbell Trail**
9.5 miles *Hillsborough and Pinellas Counties*
- **Florida Coast-to-Coast Trail**
250 miles *Spanning multiple counties from Pinellas to Brevard*
- **Legacy Trail**
18.5 miles *Sarasota County*
- **Starkey Gap Trail**
7.5 miles *Pasco and Pinellas Counties*
- **Suncoast Trail**
41.3 miles *Hillsborough, Pasco, Hernando, and Citrus Counties*
- **Good Neighbor Trail**
10.7 miles *Hernando County (connects to the Withlacoochee State Trail)*



Good Neighbor Trail



Courtney Campbell Trail

Transportation Modes Overview

Public Transportation

While each county in the SCTPA region provides local transit services, enhancing regional transit services that cross county lines has long been a priority for the SCTPA. It is due to this regional collaboration that the Transportation Disadvantaged (TD) Tampa Bay project brought cross-county trips for the TD community for the first time ever. It is also responsible for the successful continuation of the regional vanpool program, despite the disintegration of its host agency in recent years. The SCTPA has been leading and supporting the evaluation of regional travel studies for decades, many of which have been implemented in some manner.



SunRunner
Bus Rapid
Transit (BRT)
Service



Tampa Bus
Rapid Transit
(BRT) Streetcar
Enhancements



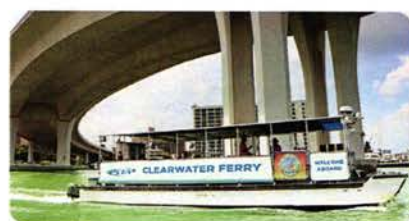
Manatee
County Area
Transit (MCAT)
Service to Bay
Pines VA



Transportation
Disadvantaged
(TD) Services &
Regional Ride
Guide



Pinellas
Suncoast Transit
Authority (PSTA)
Regional Vanpool



Ferry Services
(Clearwater
Ferry and Cross-
Bay Ferry)



US 19 Regional
Rapid Transit
Development
(RRTD)
Tampa Bay



Flamingo Fares
(Regional Fare
Collection
System)



Unique Initiatives in Communities and Education

An important focus by the SCTPA and its affiliate MPOs/TPOs has been the public involvement strategies that have occurred with interactive website development and use of social media outlets. Public notices, hearings, surveys, workshops, and committee involvement garner valuable public input which helps to address the needs of the communities in long range transportation planning initiatives and processes.



Tri-County LRTP Community Engagement

A collaborative outreach initiative engaging residents across Hillsborough, Pasco, and Pinellas Counties to shape the LRTP, ensuring a future-ready, multimodal transportation network.



Gulf Coast Safe Streets Summit & Ongoing Safety Efforts

An annual event bringing together transportation leaders, advocates, and stakeholders to advance safety strategies, with continued regional efforts focused on making streets safer for all users.



Tri-County Ride Guide

A user-friendly guide focused on helping Transportation Disadvantaged (TD) individuals access essential transit services across the tri-county area. It provides clear information to help residents and visitors navigate public transportation with ease.



Joint Advanced Traffic Management System (ATMS)

A coordinated system designed to provide real-time traffic information to improve mobility and emergency response within the major corridors of the tri-county region.



Initiatives in Resiliency and Environment



2022

Hillsborough Freight Resilience Study

This study, completed in November 2022, mapped supply chains and explored potential weaknesses under adverse conditions, identifying strategies to respond and recover quickly.



2023

Hernando/Citrus MPO Vulnerability & Risk Assessment Study

This study, completed in 2023, assessed vulnerabilities and risks within the Hernando/Citrus Metropolitan Planning Organization to inform future planning and mitigation strategies.



2024

Regional Environmental Coordination Workshop

On May 13, 2024, the Hillsborough TPO, Hernando/Citrus MPO, Forward Pinellas, and Pasco MPO held a joint workshop to discuss the environmental impacts of transportation planning.



Tampa Bay



Vision-Driven Project Priorities

As part of the vision of the SCTPA, project priorities are identified that are not only within the boundaries of each MPO/TPO, but go beyond its borders to contiguous jurisdictions. Addressing the transportation needs of a rapidly growing region is vital to the consideration of projects collectively advocated for by the SCTPA.

Top Project Priorities for the SCTPA Region

- I-75 Interchange at Gibsonton Dr (*ROW funded*)
- I-275 Express Lanes from I-375 to 38th Ave N
- I-275/SR 60 Tampa Westshore District Interchange Phase 3
- SR 54/US 41 Intersection
- US 41 from SR 44 to SR 200
- Desoto Bridge Replacement
- Bradenton-Palmetto Connector
- I-4 and the SR 33 Interchange Design and Construction (*Exit 38*)
- Downtown Lakeland Intermodal Transit Center
- Regional Rapid Transit in the I-275 Corridor
- Regional Passenger Rail Transit connection between Tampa and Orlando
- HART Heavy Maintenance Facility
- Florida/Tampa Bus Rapid Transit Project (*Downtown Tampa to USF*)
- Pasco/Hernando County Line Road
- SR 60 from CR 630 to US 441



An example project is the completion of County Line Rd. along the Hernando/Pasco border. This project will connect and widen existing portions of the roadway, while adding accommodations for bicyclists and pedestrians, providing a continuous east/west connection for the surrounding communities.



Conclusion

The SCTPA supports local, regional, and statewide projects that improve access to transportation opportunities in the West Central Florida region. Through the hard work of this collaborative team of transit and transportation-minded individuals, the SCTPA has been successful in these efforts. As the region stands to see continued growth in population, economy, and travel, the SCTPA will provide sound, forward-thinking transit and transportation options to help promote and sustain this growth.

To learn more about the SCTPA, please visit suncoasttpa.org

Voting Members

- Forward Pinellas
- Hillsborough TPO
- Polk TPO
- Hernando/Citrus MPO
- Pasco County MPO
- Sarasota/Manatee MPO

Non-Voting Advisors

- Florida Department of Transportation (FDOT)
- Southwest Florida Regional Planning Council
- Tampa Bay Regional Planning Council (TBRPC)
- West Central Florida Regional Planning Council

MPO Staff Directors

- | | |
|---------------------|----------------------|
| Forward Pinellas | Pasco County MPO |
| • Whit Blanton | • Tania Gorman |
| Hernando/Citrus MPO | Polk TPO |
| • Bob Esposito | • Ryan Kordek |
| Hillsborough TPO | Sarasota/Manatee MPO |
| • Johnny Wong | • David Hutchinson |



Contact us

Forward Pinellas • 727.464.8250 • www.forwardpinellas.org
Hernando/Citrus MPO • 352.754.4082 • www.hernandocitrusmpo.us
Hillsborough TPO • 813.272.5940 • www.planhillsborough.org
Pasco MPO • 727.847.8140 • www.pascompo.net
Polk TPO • 863.534.6486 • www.polktpo.com
Sarasota/Manatee MPO • 941.359.5772 • www.mympo.org

Visit our website for more information:
suncoasttpa.org

