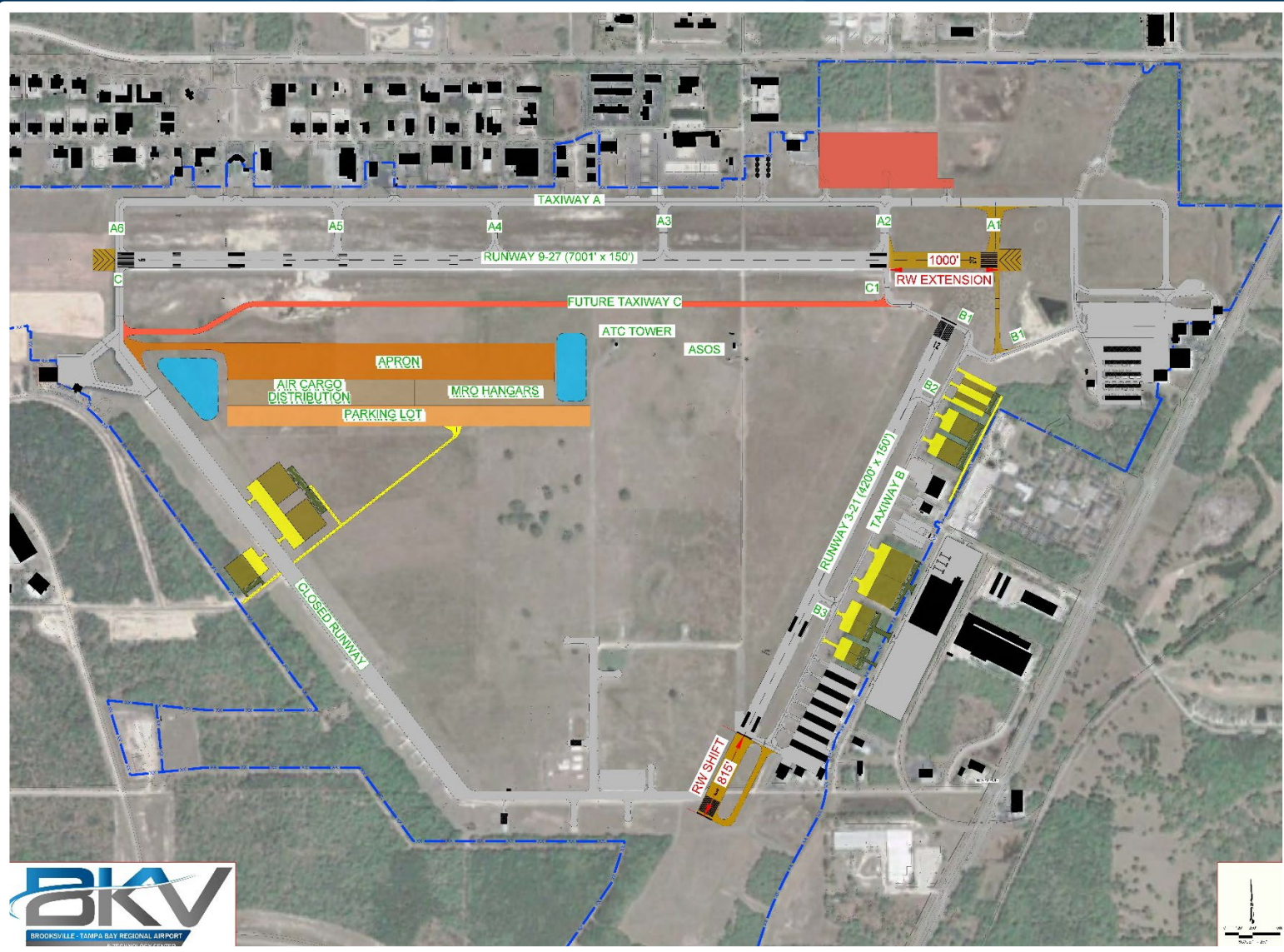


Infield Infrastructure Development Plan

- April-October 2023
- Analysis of airport infield bordered by both active runways and inactive runway
- Study will include:
 - New roadways and security improvements
 - Stormwater calculations and modeling
 - Utility requirements (water, electricity, sewer, gas, and tele-communications)
 - Implementation plan
 - Cost estimates
 - Funding plan



Multihog CV Sweeper

