



Scale - Not To Scale

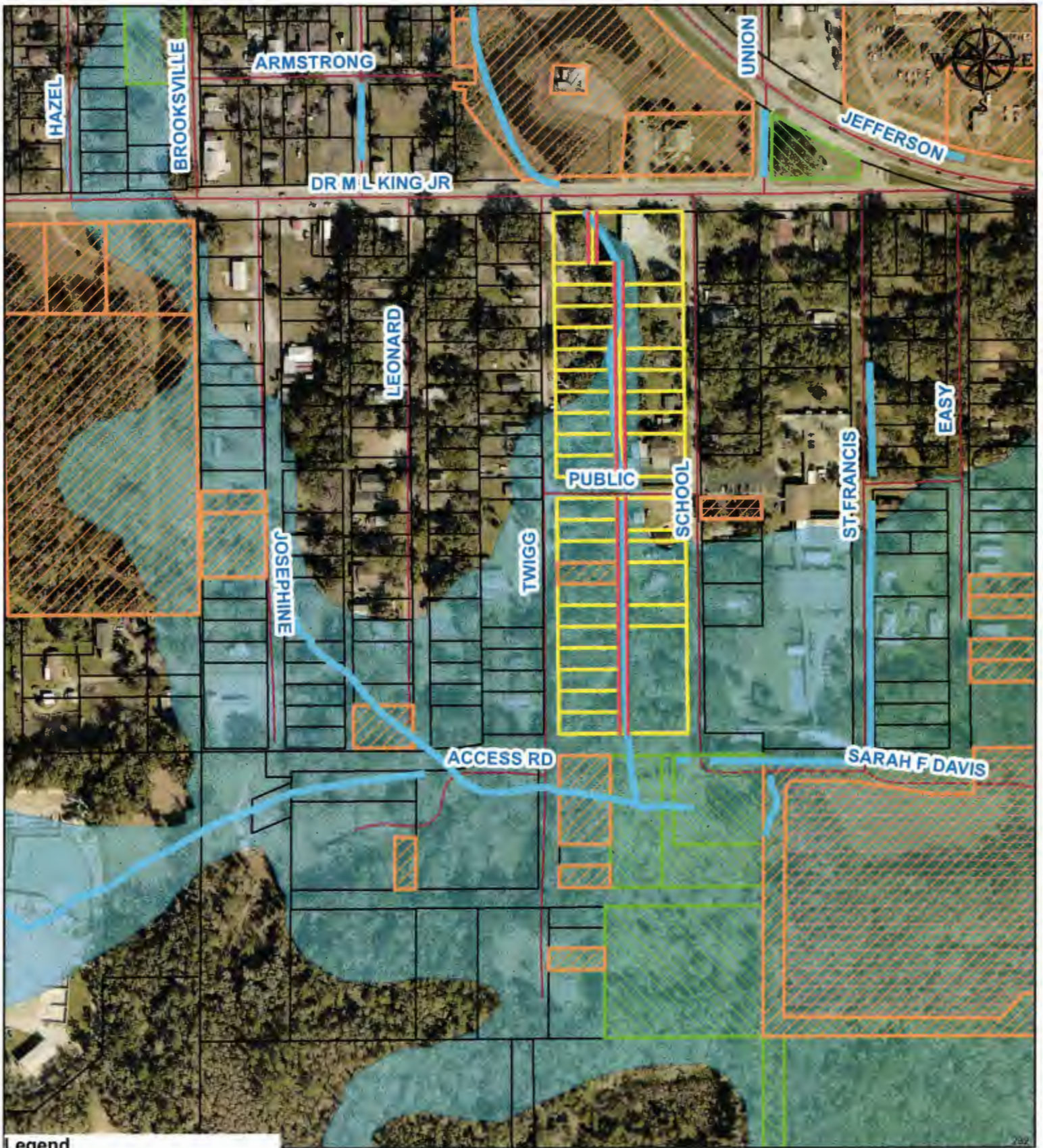
Legend

- Parcels
- Twigg St & School St Parcels
- Drainage_Channel
- Proposed Drainage Easement
- Owned by Hemando County
- Owned by Hemando_District_Schools
- Owned by City of Brooksville_

South Brooksville Drainage Maintenance



Hernando County Geographic Information System (GIS)
 The information in this database or as represented upon a digital or hard copy thereof is compiled and/or generated for internal County purposes, is not necessarily official, and may or may not reflect the most recent changes. Accordingly, use of this information is at the user's own risk, and Hernando County hereby disclaims any liability for claims, damages, injury, or loss of any kind based upon use of, or reliance upon, the information herein for any purpose whatsoever. 20230515



Legend

- Parcels
- Twigg St & School St Parcels
- Drainage_Channel
- Proposed Drainage Easement
- Owned by Hemando County
- Owned by Hemando_District_Schools
- Owned by City of Brooksville_
- Flood100yr

Scale - Not To Scale

South Brooksville Drainage Maintenance



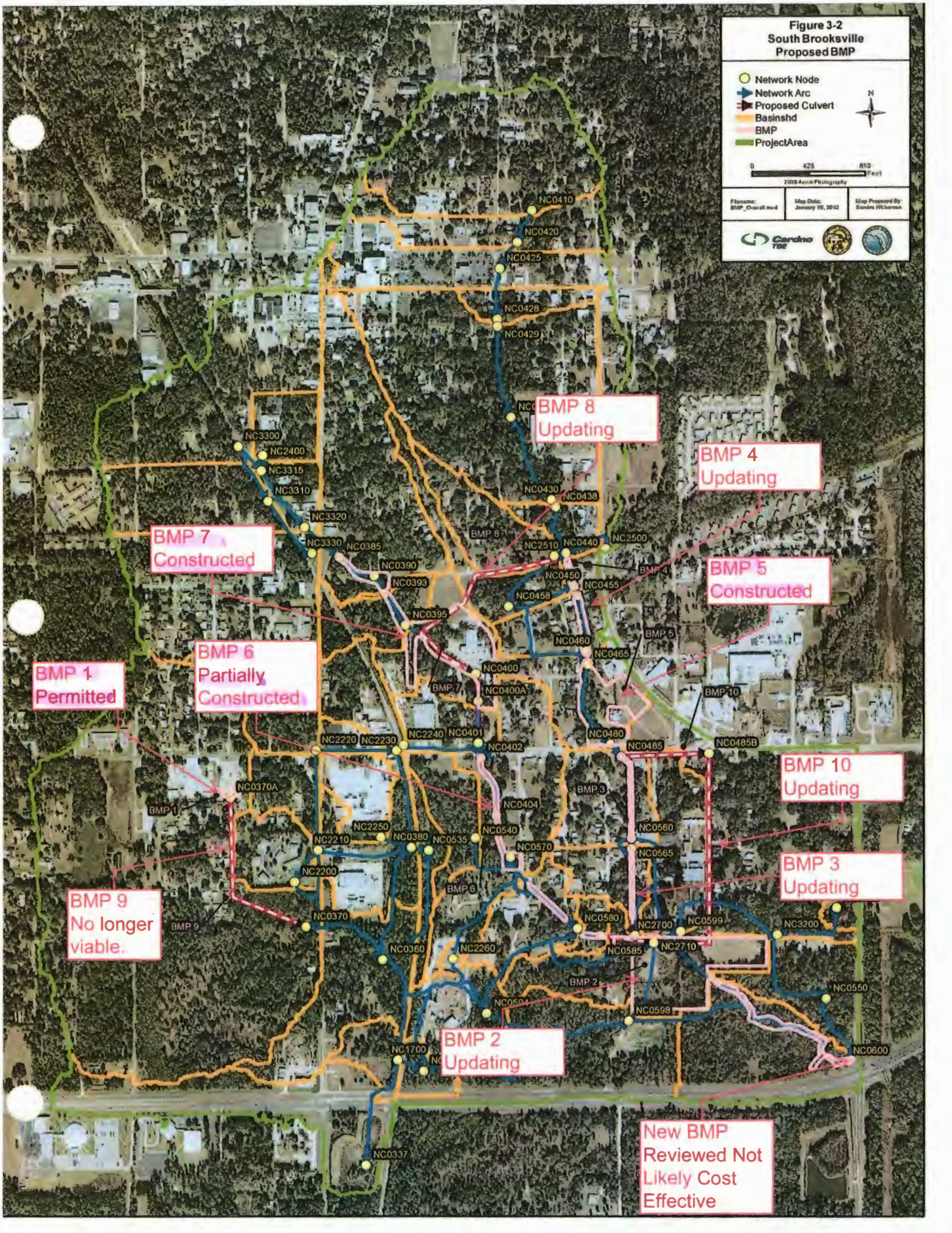
Hernando County Geographic Information System (GIS)
 "The information in this database or as represented upon a digital or hard copy thereof is compiled and/or generated for internal County purposes, is not necessarily official, and may or may not reflect the most recent changes. Accordingly, use of this information is at the user's own risk, and Hernando County hereby disclaims any liability for claims, damages, injury, or loss of any kind based upon use of, or reliance upon, the information herein for any purpose whatsoever." 20230515

Figure 3-2
South Brooksville
Proposed BMP

Legend:
● Network Node
— Network Arc
— Proposed Culvert
— Basinshd
— BMP
— ProjectArea

Scale: 0 425 850 Feet
2009 Aerial Photography

Filename: BMP_Overall.mxd | Map Date: January 19, 2012 | Map Prepared By: Sandra Wickman



BMP 1
Permitted

BMP 7
Constructed

BMP 6
Partially
Constructed

BMP 9
No longer
viable.

BMP 2
Updating

BMP 8
Updating

BMP 4
Updating

BMP 5
Constructed

BMP 10
Updating

BMP 3
Updating

New BMP
Reviewed Not
Likely Cost
Effective

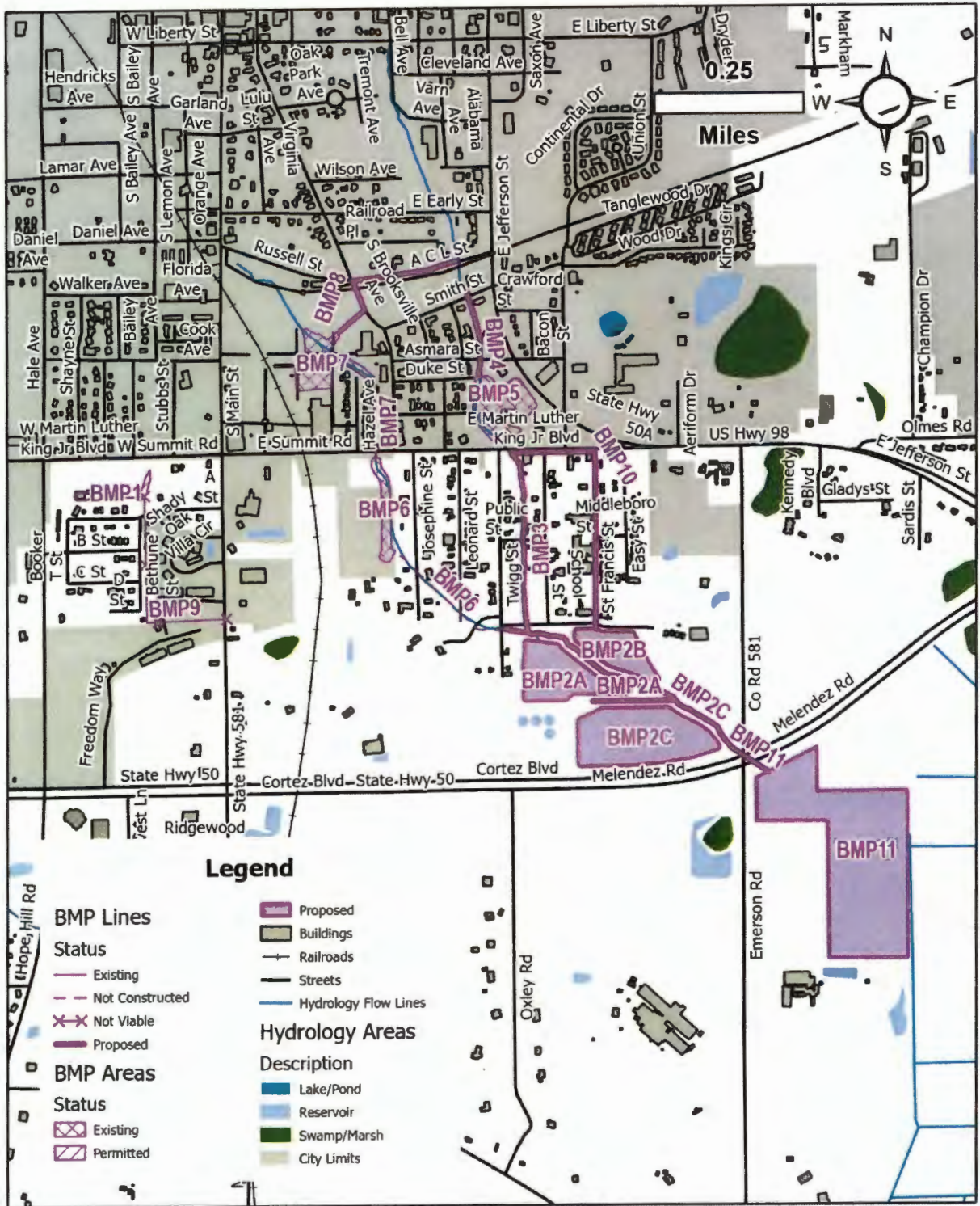
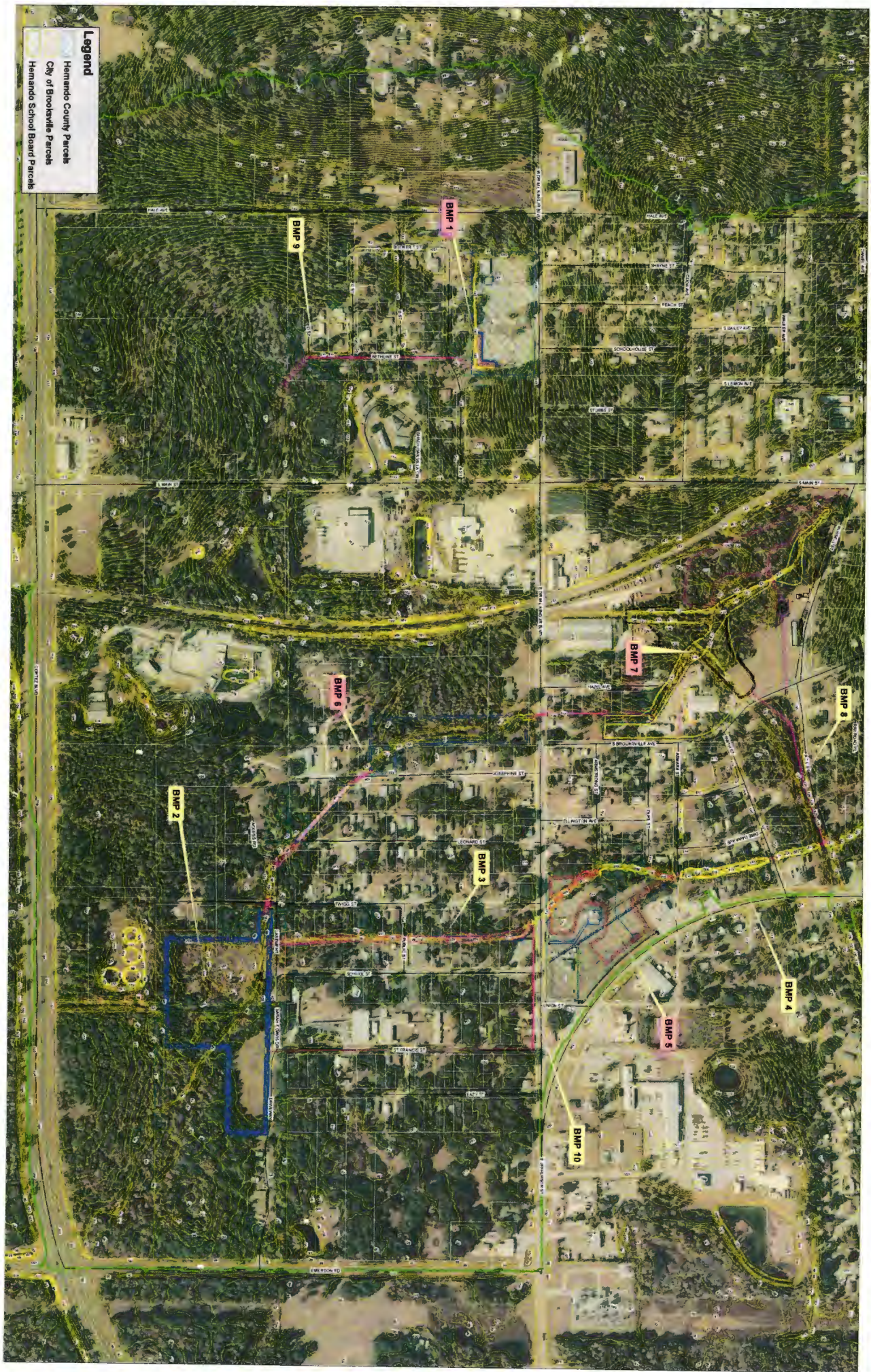
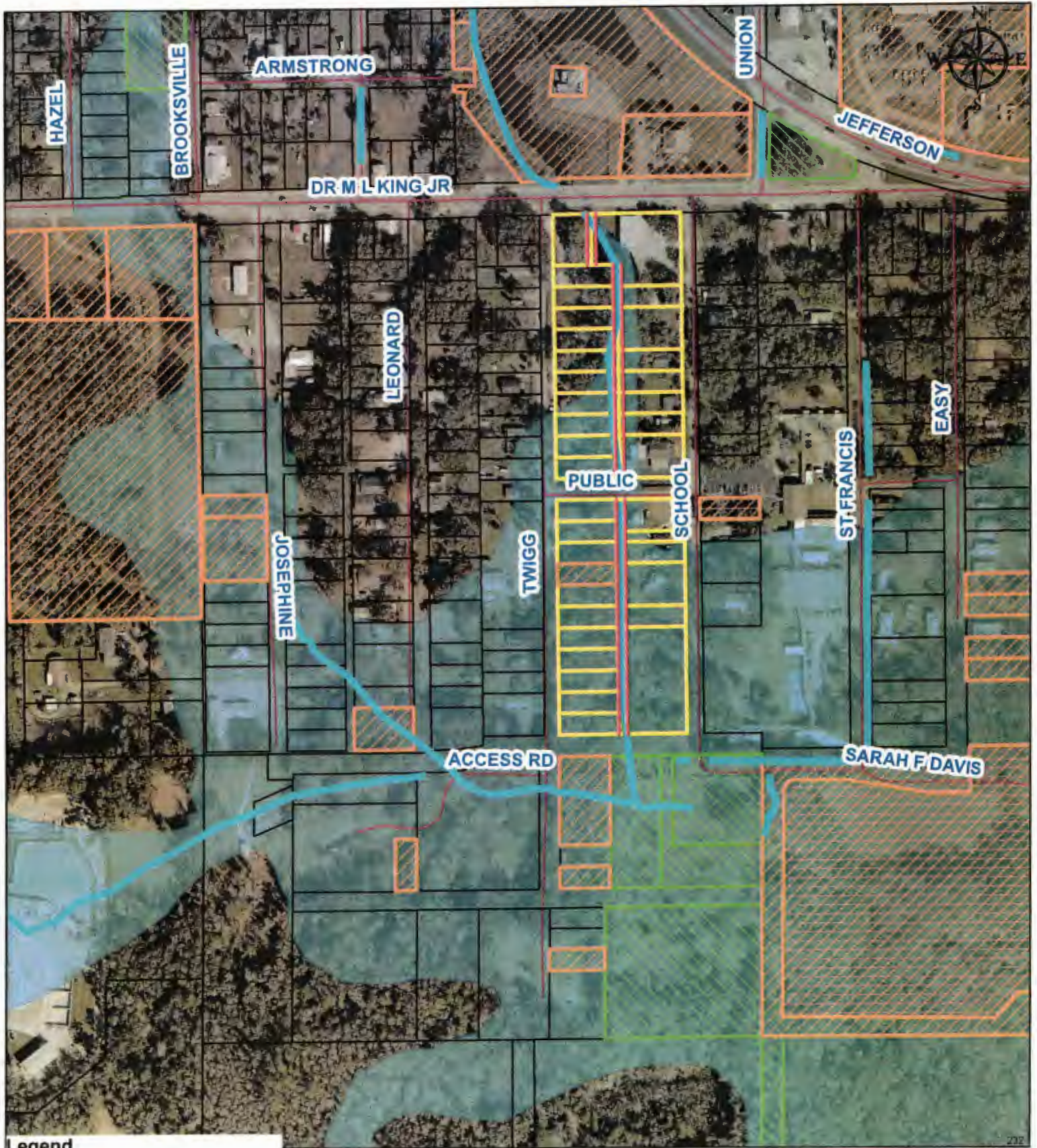


Figure 1. BMPs

Legend
Hemando County Parcels
City of Brooksville Parcels
Hemando School Board Parcels





Legend

- Parcels
- Twigg St & School St Parcels
- Drainage_Channel
- Proposed Drainage Easement
- Owned by Hernando County
- Owned by Hernando_District_Schools
- Owned by City of Brooksville_
- Flood100yr

Scale - Not To Scale

South Brooksville Drainage Maintenance



Hernando County Geographic Information System (GIS)
 The information in this database or as represented upon a digital or hard copy thereof is compiled and/or generated for internal County purposes, is not necessarily official, and may or may not reflect the most recent changes. Accordingly, use of this information is at the user's own risk, and Hernando County hereby disclaims any liability for claims, damages, injury, or loss of any kind based upon use of, or reliance upon, the information herein for any purpose whatsoever. 20230515

Table 1. BMP Summary Table

BMP #	Type / Status	Previous Master Plan	Update
1	Attenuation Permitted	Stormwater Improvements at the Hernando County Department of Public Works (DPW) compound	N/A, Not included in Watershed Model update because it was upstream of BMP 9 and would not impact stages and flows downstream
2	Attenuation Not Permitted	Regional Stormwater Management System at decommissioned Brooksville Wastewater Treatment Plant	Maximum storage was determined, and configuration of inlets/outlets were reviewed to maximize stage reduction.
3	Conveyance Not Permitted	Stormwater improvements between Twigg and School Street from Martin Luther King Boulevard to Newgate Street	Channel and RCB alternatives reviewed.
4	Conveyance Not Permitted	Stormwater improvements of the existing channel located between Dire-Dawa Avenue and Jefferson Street from Smith Street to Asmara Street.	Replacement of culverts under Smith and Asmara. Gabions between Smith and Asmara.
5	Attenuation Constructed	Stormwater improvements at the cell tower located on "Parcel 23" at the corner of Asmara Street, Jefferson Street, and Martin Luther King Boulevard	As-Built Information used to update watershed model.
6	Conveyance Constructed	Stormwater improvements to the existing channel (also known locally as Parson's Creek) from Martin Luther King Boulevard to the parcel owned by Hernando County located on the west side of Josephine Street, construction of a detention pond on the County	As-Built Information used to update watershed model.

BMP #	Type / Status	Previous Master Plan	Update
		owned property, and channel improvements	
7	Attenuation Constructed	stormwater detention pond on the City of Brooksville DPW site	As-Built Information used to update watershed model.
8	Conveyance Not Permitted	60" diameter pipe to divert flow from the existing channel west of Jefferson Street (upper reaches of Saxon's Brook) to the existing channel at Russell Park (Parson's Creek)	18" to 36" RCPs to direct stormwater to BMP 7 upstream of control structure
9	Conveyance No longer viable	36" diameter culvert along Bethune Street from A Street to D Street	N/A, Residential development prevents construction.
10	Conveyance Not Permitted	a 24" x 38" elliptical pipe along Martin Luther King Boulevard from the existing channel east of Twigg Street to St. Francis Street culvert which is currently in design phase. Improvements include one stormwater manhole and diversion structure within the existing channel	18" to 36" RCP pipes along St. Frances Street connecting to BMP 2 or bypassing downstream.
11	Conveyance New	N/A	Additional culvert crossings under Cortez Blvd (SR 50). Impacts were not significant enough to justify the cost.
From South Brooksville Stormwater Master Drainage Plan 2011			



TWIGG STREET EASEMENTS

<u>KEY #</u>	<u>STREET NAME</u>	<u>NOTES---NORTH BLOCK</u>
12364	TWIGG ST	
12391	E DR MLK BLVD	
12541	TWIGG ST	
12550	SCHOOL ST	
12569	SCHOOL ST	
12578	SCHOOL ST	
12587	SCHOOL ST	
12596	SCHOOL ST	
12603	SCHOOL ST	
12667	TWIGG ST	PROBATE--12 OWNERS
12676	TWIGG ST	
12685	TWIGG ST	4 OWNERS
12694	TWIGG ST	
12701	TWIGG ST	
12710	TWIGG ST	
12729	TWIGG ST	2 ACTIVE MORTGAGES
12738	TWIGG ST	CODE ENFORCEMENT LIEN
12747	TWIGG ST	

<u>KEY #</u>	<u>STREET NAME</u>	<u>NOTES---SOUTH BLOCK</u>
12612	SCHOOL ST	
12621	SCHOOL ST	ACTIVE MORTGAGE
12630	SCHOOL ST	
12649	TWIGG ST	
12756	TWIGG ST	
12765	TWIGG ST	
12774	TWIGG ST	
12783	TWIGG ST	OWNER DECEASED
12792	TWIGG ST	
12809	TWIGG ST	
12818	TWIGG ST	
12827	TWIGG ST	
669244	SCHOOL ST	
716167	TWIGG ST	
1336851	TWIGG ST	HERNANDO CTY PROPERTY
1381720	TWIGG ST	
1568388	TWIGG ST	