

**From:** [Jeffrey Rogers](#)  
**To:** [Jeffrey Rogers](#)  
**Cc:** [Erik Van De Boogaard](#); [Carla Rossiter-Smith](#)  
**Subject:** FW: MCC\_BLDG CONNECTED HERNANDO COUNTY FS15 ITB\_SUBLIST 2025.05.05  
**Date:** Monday, May 12, 2025 5:19:21 PM  
**Attachments:** [image001.png](#)  
[image002.png](#)  
[image003.png](#)  
[image004.png](#)  
[image005.png](#)  
[image006.png](#)  
[image007.png](#)  
[image008.png](#)  
[Hernando County Fire Station 15 - GEI Proposal.pdf](#)

---

For Fire Station 15 on the agenda tomorrow this is an additional Electrical Sub quote that was not included in the backup.

Jeffrey Rogers, P.E.  
County Administrator  
Hernando County  
15470 Flight Path Drive  
Brooksville, FL 34604  
(352)754-4841  
[jrogers@hernandocounty.us](mailto:jrogers@hernandocounty.us)

---

**From:** Erik Van De Boogaard <[EVanDeBoogaard@co.hernando.fl.us](mailto:EVanDeBoogaard@co.hernando.fl.us)>  
**Sent:** Monday, May 12, 2025 4:53 PM  
**To:** Jeffrey Rogers <[JRogers@co.hernando.fl.us](mailto:JRogers@co.hernando.fl.us)>  
**Subject:** Fw: MCC\_BLDG CONNECTED HERNANDO COUNTY FS15 ITB\_SUBLIST 2025.05.05

FYI

Erik

---

**From:** John Begani <[JBegani@manhattanconstruction.com](mailto:JBegani@manhattanconstruction.com)>  
**Sent:** Monday, May 12, 2025 4:02 PM  
**To:** Erik Van De Boogaard <[EVanDeBoogaard@co.hernando.fl.us](mailto:EVanDeBoogaard@co.hernando.fl.us)>;  
[jmmiller@manhattanconstruction.com](mailto:jmmiller@manhattanconstruction.com) <[jmmiller@manhattanconstruction.com](mailto:jmmiller@manhattanconstruction.com)>  
**Cc:** [etmartin@manhattanconstruction.com](mailto:etmartin@manhattanconstruction.com) <[etmartin@manhattanconstruction.com](mailto:etmartin@manhattanconstruction.com)>;  
[wrogers@manhattanconstruction.com](mailto:wrogers@manhattanconstruction.com) <[wrogers@manhattanconstruction.com](mailto:wrogers@manhattanconstruction.com)>; Kyle Avera  
<[KAvera@manhattanconstruction.com](mailto:KAvera@manhattanconstruction.com)>  
**Subject:** RE: MCC\_BLDG CONNECTED HERNANDO COUNTY FS15 ITB\_SUBLIST 2025.05.05

**CAUTION:** This email originated from outside the organization. Do not click links or open attachments unless you recognize the sender and know the content is safe.

Apologies as this one looked like it was never saved to the folder.



**John Begani**

Director of Preconstruction  
Manhattan Construction Company

813.675.1960 office | 239.595.8737 mobile

[jbegani@manhattanconstruction.com](mailto:jbegani@manhattanconstruction.com)

5405 Cypress Center Drive, Suite 200, Tampa, FL 33609



---

**From:** Erik Van De Boogaard <[EVanDeBoogaard@co.hernando.fl.us](mailto:EVanDeBoogaard@co.hernando.fl.us)>

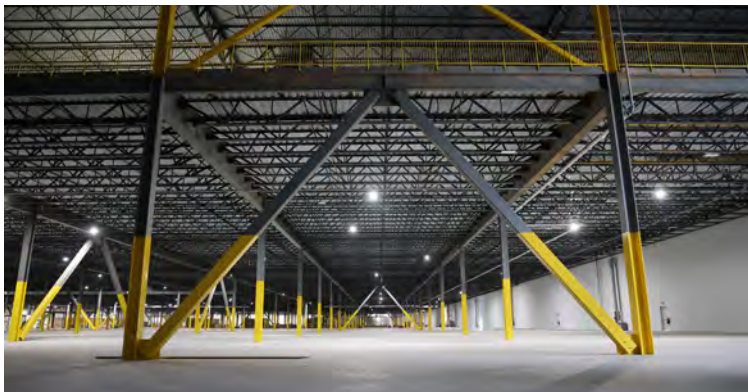
**Sent:** Monday, May 12, 2025 3:48 PM

**To:** John Begani <[JBegani@manhattanconstruction.com](mailto:JBegani@manhattanconstruction.com)>; Michael Miller  
<[jmmiller@manhattanconstruction.com](mailto:jmmiller@manhattanconstruction.com)>

**Cc:** Edward Martin <[etmartin@manhattanconstruction.com](mailto:etmartin@manhattanconstruction.com)>; Watson Rogers  
<[wrogers@manhattanconstruction.com](mailto:wrogers@manhattanconstruction.com)>; Kyle Avera <[KAvera@manhattanconstruction.com](mailto:KAvera@manhattanconstruction.com)>

**Subject:** RE: MCC\_BLDG CONNECTED HERNANDO COUNTY FS15 ITB\_SUBLIST 2025.05.05

There is only one quote for electrical in the folder, but you show another on the bid tab.



**Manhattan**  
Construction Group

# HERNANDO COUNTY FIRE STATION NO. 15



RELIABLE  
RESOURCES



RELIABLE  
OUTCOMES



RELIABLE  
INSIGHTS



GENUINE CARE  
FOR PEOPLE



## RELY ON GAYLOR

Gaylor Electric delivers on our Cornerstone of Reliable Resources, Outcomes, Insights and Genuine Care for People; dedicated to Innovation, Quality and being Measurement-Centric accountable. We are comprised of multiple national production and innovation-driven locations that provide innovative industry expertise, and client-focused solutions. As the Highest Performing National Contractor of Excellence, Gaylor Electric offers design-build electrical construction, 24/7 on-demand electrical support, and utility service. Our teams provide an unparalleled commitment to cultivating strong business relationships, resulting in continued client loyalty.



**DESIGN** | Our teams of experienced engineers and virtual designers work to customize an approach that meets your project's true objectives.

**BUILD** | As proven builders, we are committed to planning and executing quality driven electrical construction from beginning to end.



**SERVICE** | Whether you're seeking emergency response or routine maintenance, our team will execute your facility's electrical work with precision and care.

November 12, 2024

Subject: Hernando County Fire Station No. 15

Mr. John Begani:

Per your request for electrical pricing on the above referenced project, Gaylor Electric, Inc. is pleased to submit this proposal for your consideration.

Our proposal is based on Gaylor's experience and understanding of the electrical requirements of the proposed facility per the documents, dated **02/28/2024** received from Wannemacher Jensen Architects with clarifications as set forth by the following electrical scope of work narrative and mutually agreeable contract terms.

Gaylor Electric's total price for the electrical construction on the above referenced project is as described below:

**WE HAVE INCLUDED**

- Purchase and installation of all light fixtures and lamps
- Purchase and install Distribution Panels
  - Misc disconnects for pumps and equipment included
- Code compliant FA System per documents
- Provide and install power to well pump, pump and controls by others
- Provide and install power and fire alarm in fire pump house
- Provide and install raceway for low voltage door controls in the apparatus bay
  - Low voltage push button and conductors by door contractor
- Lightning Protection System
- Utility Transformer Feeds to Designated CT Cabinets – Meters by Power Company
- Site Lighting as shown
- Secondary Feeders from Transformer Location Shown on Drawings
- Generator and installation
- Electrical identification per Spec
- Full Conduit for HR and Branch
- Single point connection to monument sign
- Provide and install low voltage systems complete:
  - Structured Cabling
  - Door Access
  - CCTV
- Rough in and wiring for alerting system ONLY





## WE HAVE EXCLUDED

- Performance and payment bonds
- Bid bond
- Rock Excavation
- Job overtime to meet accelerated construction schedule
- Temperature control conduit and wiring
- Roof penetration and patching for all conduit and sleeves
- DAS / BMS
- Cutting of ceiling tiles for electrical scope of work
- Bollards for new electrical equipment
- Utility company charges, fees or deposits
- Removal of excavation spoils off site
- Purchase and installation of the monument sign
- Pulling of primary wire to The Transformer
- Drilling Pop-up Receptacles

Base bid for electrical as outlined in this proposal ..... \$1,400,000.00

**Alternate ADD to the lighting package \$24,511.00**

The pricing in this quotation is valid for a period of 30 days from the date of this proposal, except for increases in the cost of material or equipment related to increases in commodity pricing or government-imposed tariffs. Any such increase prior to the execution of a written agreement from the date of this proposal, will be the amount of increase quoted by our intended suppliers and/or subcontractors.

Please feel free to contact us with any questions that you may have, or if we may be of further assistance.

Sincerely,  
Aaron Mohr  
Project Manager

This proposal, drawings, and other attached information is the property of Gaylor Electric, Inc. It is confidential and its submission or distribution to meet proposal requirements or for other purposes in connection with this project is not to be construed as publication in derogation of Gaylor Electric, Inc's common law copyright or other reserved rights. Neither this proposal, drawings and other attached information, nor any part of it, nor any information concerning it, may be exhibited, reproduced, or furnished to others, nor may photographs be taken of any article fabricated or assembled from this information without written consent of Gaylor Electric, Inc.

Copyright by Gaylor Electric, Inc., 2024

# SAFETY CULTURE



## OVER THE YEARS, OUR SAFETY CULTURE HAS BEEN INTENTIONALLY DEVELOPED.

Gaylor Electric's industry-leading safety program cultivates safe job-sites for everyone involved – our employees, the employees of our project partners, and members of the general public who may be impacted by our projects.



### OBSERVE

Being on-site every single day actively looking for hazards and correcting them.



### TRACK

Collecting and organizing data helps us to identify patterns, highlight trends, and expose habits to avoid in the future.



### COMMUNICATE

Sharing what we see, along with the data we collect is key to increasing awareness and brainstorming solutions.



### CHANGE

By taking what we've gathered and using it to change behaviors and shape our education programs, we will avoid repeat incidents.



### INNOVATE

Introducing new safety methods, ideas, and resources from lessons learned to help cultivate a safer work environment.

## INTERNAL INITIATIVES

- » Training and Education
- » Job-site Specific Safety Plans
- » Evolving with the Industry
- » Genuine Care for people
- » Goal is always **ZERO**

## 2023 SAFETY STATS



## FIRE STATION EXPERIENCE

**25+**  
FIRE STATION  
FACILITIES

**637K**  
SF  
BUILT

**\$8 MIL+**  
CONTRACT VALUE



**7**  
STATES




### Pike Township Fire Station

Indianapolis, Indiana

**Customer:** Garcia Construction Group  
**Project Size:** 12,500 SF



### Fishers Fire Station #91

Fishers, Indiana

**Customer:** Myers Construction Mgt  
**Project Size:** 6,800 SF



### Penn Fire Station #13

Mishawaka, Indiana

**Customer:** Core Construction Indiana  
**Project Size:** 11,000 SF



### Boeing Fire Station

North Charleston, South Carolina

**Customer:** KBR Building Group  
**Project Size:** 10,000 SF



### Aberdeen Fire Department

Aberdeen, North Carolina

**Customer:** Progressive Contracting  
**Project Size:** 5,280 SF



### Indianapolis Fire Dept #5

Indianapolis, Indiana

**Customer:** Shiel Sexton  
**Project Size:** 3,546 SF



### Lawrence Fire Station #38

Indianapolis, Indiana

**Customer:** Garmon Construction  
**Project Size:** 22,537 SF



### Topeka Fire Station

Topeka, Indiana

**Customer:** Feters Construction  
**Project Size:** 18,000 SF



# INNOVATION TECHNOLOGIES

Through innovative fabrication and engineering, our electrical team has mastered the art of maximizing schedule and eliminating construction complications and safety hazards. Among the benefits of a solid preconstruction plan, manufacturing plays a large role in our project success. By utilizing in-house manufacturing, our experienced team can build complex electrical modules in a controlled environment – with multiple quality checks throughout assembly.



**Create a safer environment by removing hazardous work from the jobsite.**



**Stay ahead of schedule by assembling electrical modules and components in a controlled environment.**



**Maximize productivity by allocating manpower to necessary onsite tasks.**



**Control costs by eliminating rework and removing excess onsite manpower.**



# 3

## NATIONAL INNOVATION CENTERS

**NOBLESVILLE, INDIANA | MOORESVILLE, NORTH CAROLINA | ATLANTA, GEORGIA**

Our facilities can handle the transportation of up to 50 trucks weekly over a distance of 3,000 miles nationwide. This capacity ensures efficient and reliable fabrication for our clients' schedules and needs.

IT'S ABOUT  
**RELIABILITY.**



**GAYLOR**  
*ELECTRIC*  
The Highest Performing National Contractor of Excellence



5808 BRECKENRIDGE PARKWAY, SUITE D  
TAMPA, FL 33610  
PH: 813-255-2800

[www.GAYLOR.com](http://www.GAYLOR.com)

