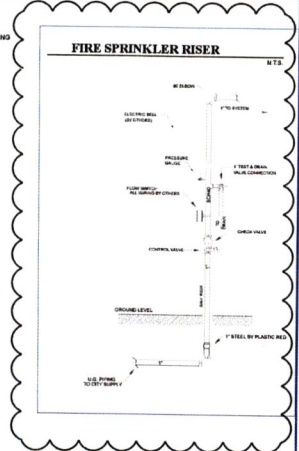


A-A BLDG SECTION
SCALE 1/8" = 1'-0"

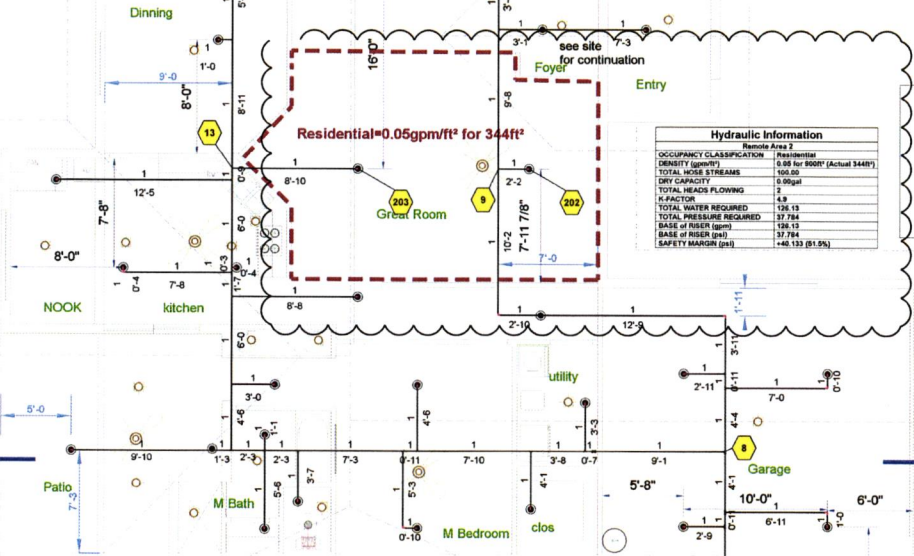
FIRE SPRINKLER GENERAL NOTES & SPECIFICATIONS

- GENERAL PROJECT SCOPE: THE PROJECT INVOLVES THE CONSTRUCTION OF A NEW AUTOMATIC WET PIPE FIRE SPRINKLER SYSTEM TO PROTECT AN EXISTING SINGLE RESIDENTIAL HOME TURNED INTO A FULL OCCUPANCY. ALL WORK IS TO BE IN ACCORDANCE WITH NFPA 13D 2013 ED., THE FLORIDA FIRE PREVENTION CODE, AND THE LOCAL AUTHORIZED HAVING JURISDICTION. ONE RISER WILL BE INSTALLED.
- ALL DIMENSIONS ARE CENTER-TO-CENTER UNLESS NOTED OTHERWISE (C/C).
- DESIGN PARAMETERS:
 - AS PER NFPA 13D 2013 EDITION AND ALL LOCAL CODES.
 - ALL HANGERS TO BE ACCORDANCE WITH NFPA-13 2013 ED.
 - ROUGH-IN PIPING TO BE FLUSHED AND TESTED IN ACCORDANCE WITH NFPA-13 2013 ED.
 - ALL UNDERGROUND WORK (MATERIAL, INSTALLATION, FLUSHING, AND TESTING) IS TO BE IN ACCORDANCE WITH NFPA-13 2013 ED.
- MATERIALS:
 - ALL FIRE PROTECTION EQUIPMENT AND MATERIALS SHALL BE U. L. LISTED (WHEN APPLICABLE). ALL INTERIOR PIPING TO BE CPVC WITH CPVC FITTINGS.
 - ALL THREADED FITTINGS ARE TO BE CLASS 125 CAST IRON OR CLASS 150 MALLEABLE IRON.
 - GROUND FITTINGS ARE TO BE U. L. LISTED AND IN ACCORDANCE WITH THE LATEST EDITION OF NFPA 13.
 - ALL THREADED PIPE IS TO BE SCHEDULE 40, BLACK, OR SCHEDULE 40 GALV. IN ACCORDANCE WITH NFPA-13 AND ASTM A 755. USE OF THREADED LORIZONTAL PIPE WITH THREADED FITTINGS SHALL NOT BE PERMITTED.
 - GROUND PIPE SHALL BE SCHEDULE 10, SCHEDULE 10 GALV. IN ACCORDANCE WITH NFPA-13 AND ASTM A 755.
 - THE FIRE SPRINKLER CONTRACTOR IS RESPONSIBLE FOR MAINTAINING AS BUILT.
 - ALL PENETRATIONS THROUGH WALLS/FLOORS SHALL BE FIRE STOPPED/WATERPROOFED TO MATCH THE RATING OF THE WALL/FLOOR.
 - AUXILIARY DRAIN VALVES ARE TO BE PROVIDED WHERE PORTIONS OF THE SYSTEM ARE INSTALLED "TRAPPED", IN ACCORDANCE WITH NFPA 13.
- THE SITE PLAN HAS BEEN SHOWN ON THESE PLANS IN ORDER TO SHOW THE UNDERGROUND HYDRAULIC NOSES USED IN THE CALCULATIONS. THE SITE PLAN SHOWN ON THESE PLANS IS TO BE USED FOR HYDRAULIC REFERENCE ONLY. SEE THE SITE UTILITY DRAWINGS FOR CONSTRUCTION REQUIREMENTS.
- QUICK RESPONSE RESIDENTIAL SPRINKLER HEADS SHALL BE INSTALLED THROUGHOUT UNLESS OTHERWISE NOTED.
- ALL SPRINKLER HEADS TO BE LOCATED AT LEAST 3" OF ANY FIN.



Hydraulic Information
Remote Area 1

OCCUPANCY CLASSIFICATION	Residential
DENSITY (sq/ft)	0.05 for 800ft² (Actual 1320ft²)
TOTAL HOSE STREAMS	100.00
DRY CAPACITY	0.85gpm
TOTAL HEADS FLOWING	1
K-FACTOR	4.9
TOTAL WATER REQUIRED	112.91
TOTAL PRESSURE REQUIRED	19.991
BASE OF RISER (psig)	112.98
BASE OF RISER (psi)	118.91
SAFETY MARGIN (psi)	+27.843 (24.2%)



Hydraulic Information
Remote Area 2

OCCUPANCY CLASSIFICATION	Residential
DENSITY (sq/ft)	0.05 for 800ft² (Actual 3440ft²)
TOTAL HOSE STREAMS	100.00
DRY CAPACITY	0.85gpm
TOTAL HEADS FLOWING	2
K-FACTOR	4.9
TOTAL WATER REQUIRED	126.13
TOTAL PRESSURE REQUIRED	37.784
BASE OF RISER (psig)	126.13
BASE OF RISER (psi)	37.784
SAFETY MARGIN (psi)	+48.133 (31.5%)

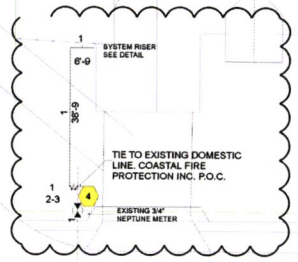


MAX. DISTANCE BETWEEN HANGERS

MINIMUM PIPE SIZE (IN)	2 1/2"	3"	3 1/2"	4"	4 1/2"	5"	6"	8"
STEEL PIPE (CONCRETE)	36"	42"	48"	54"	60"	66"	72"	84"
STEEL PIPE (CONCRETE)	36"	42"	48"	54"	60"	66"	72"	84"
STEEL PIPE (CONCRETE)	36"	42"	48"	54"	60"	66"	72"	84"
STEEL PIPE (CONCRETE)	36"	42"	48"	54"	60"	66"	72"	84"
STEEL PIPE (CONCRETE)	36"	42"	48"	54"	60"	66"	72"	84"
STEEL PIPE (CONCRETE)	36"	42"	48"	54"	60"	66"	72"	84"
STEEL PIPE (CONCRETE)	36"	42"	48"	54"	60"	66"	72"	84"
STEEL PIPE (CONCRETE)	36"	42"	48"	54"	60"	66"	72"	84"
STEEL PIPE (CONCRETE)	36"	42"	48"	54"	60"	66"	72"	84"
STEEL PIPE (CONCRETE)	36"	42"	48"	54"	60"	66"	72"	84"

NFPA SPACING REQUIREMENTS

ODIN STREET



MARINER BLVD

HYDRAULIC AREA #1:
RESIDENTIAL 0.05 GPM PER SQ. FT.
(2) HEADS FLOWING WITHIN A COMPARTMENT WITH A TOTAL OF 507 SQ. FT. AS PER NFPA 13D 2013 ED. CHAPTER 10 PARAGRAPH 10.2.1. (3) A 100 GPM HOSE STREAM ALLOWANCE HAS BEEN ADDED TO THE CALCULATIONS PER NFPA 13D 2013 ED.
SPRINKLER HEADS FLOWING AT 16 X 16 MAX SPACING WITH A 13 GPM @ 7 PSI REQUIRED

FIRE SPRINKLER FLOOR PLAN
SCALE 1/4" = 1'-0"

Sprinkler Legend

Symbol	Manufacturer	SIN	Model	Quantity	K-Factor	Type	Size	Response	Finish	Temperature	Note
●	Reliable	R3516	F1 RES 49	32	4.9	Pendent	1/2"	Quick	White	155°F	
				Total = 32							

JOB:
4432 MARINER ALF
4432 Mariner Blvd
Spring Hill, FL

DATE: 2/19/21

REVISION COMMENTS
CORRECTION PER REVIEW

COASTAL FIRE PROTECTION
8961 NORTH FORK DRIVE
N. FORT MYERS, FL 33903
PHONE 1-239-997-7721
FAX 1-239-997-0870
LIC. # 65330500012001

FIRE SPRINKLER PLAN
PERMIT NO.
CONTRACT NO.
APPROVAL: HERNANDO CO
C.D.T.
SCALE: AS NOTED
DATE: 3-5-2020
REVISION: SHEET: FP-1

ENGINEER OF RECORD
UNDER 65 HEADS
NO ENGINEER REQUIRED

In-Ground Pool

Screen Enclosure

Patio

Master Bath

Master Bedroom

Laundry Room

Closet

Kitchen

Dinning Room

Living Room

Bedroom 3

Bedroom 2

Bedroom 1

Bath

Open Porch

Green = Meeting Spot

