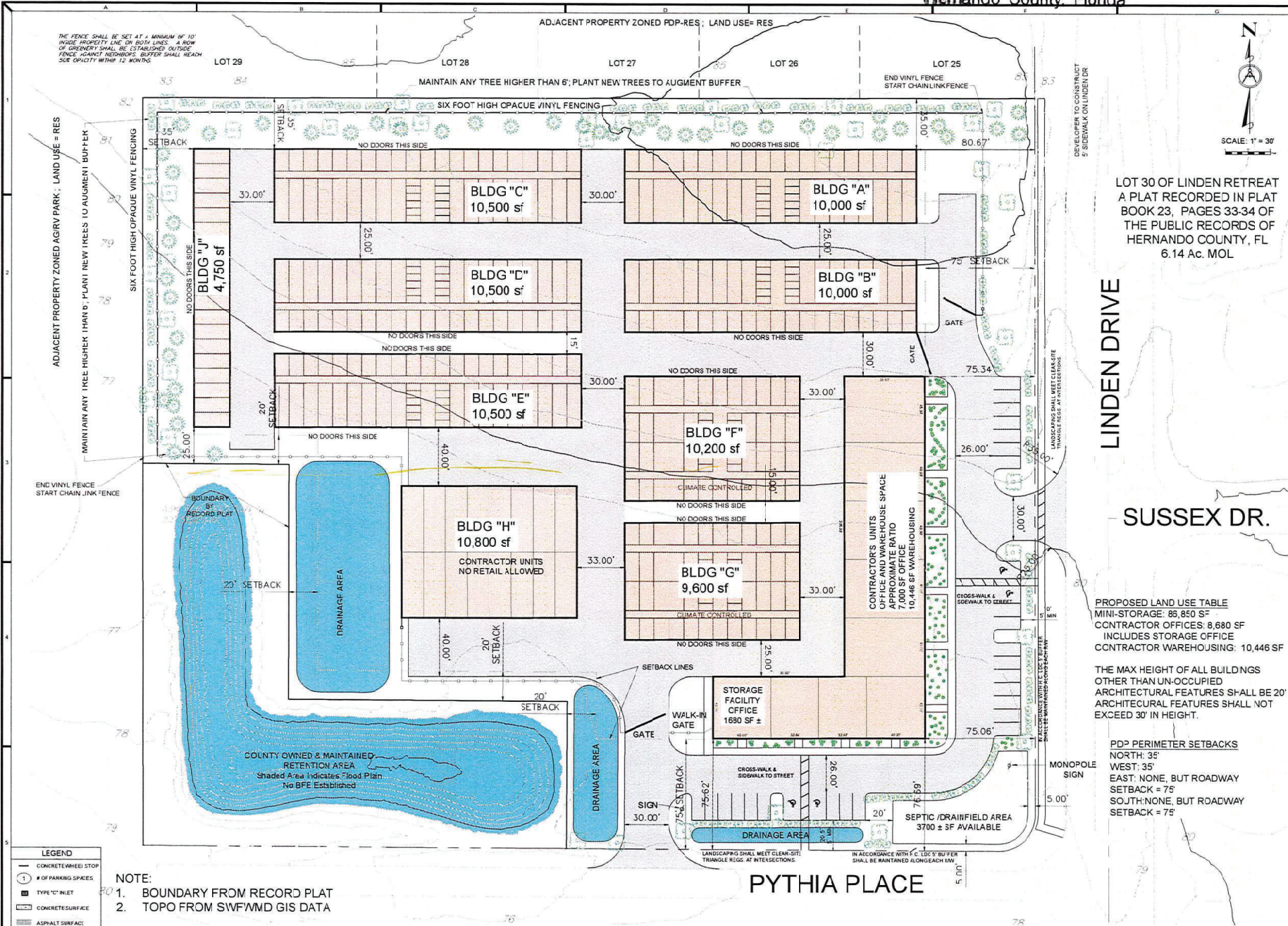


SEP 14 2022

Planning Department
Hernando County, Florida



LOT 30 OF LINDEN RETREAT
A PLAT RECORDED IN PLAT
BOOK 23, PAGES 33-34 OF
THE PUBLIC RECORDS OF
HERNANDO COUNTY, FL
6.14 AC. MOL

LINDEN DRIVE

SUSSEX DR.

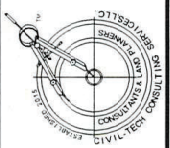
PROPOSED LAND USE TABLE
MINI-STORAGE: 86,850 S²
CONTRACTOR OFFICES: 8,680 SF
INCLUDES STORAGE OFFICE
CONTRACTOR WAREHOUSING: 10,446 SF

THE MAX HEIGHT OF ALL BUILDINGS
OTHER THAN UN-OCCUPIED
ARCHITECTURAL FEATURES SHALL BE 20'
ARCHITECTURAL FEATURES SHALL NOT
EXCEED 30' IN HEIGHT.

PD# PERIMETER SETBACKS
NORTH: 35'
WEST: 35'
EAST: NONE, BUT ROADWAY
SETBACK = 75'
SOUTH: NONE, BUT ROADWAY
SETBACK = 75'

KARASTURY
STORAGE FACILITY
MASTER PLAN

CIVIL-TECH CONSULTING SERVICES, LLC.
CIVIL ENGINEERING / RESIDENTIAL & COMMERCIAL SITE DEVELOPMENT / PLANNING & ZONING / PERMITTING / CONSTRUCTION SERVICES
15 SOUTH MAIN STREET, BLDG 1000, SUITE 1000
TALLAHASSEE, FL 32301
PHONE: (904) 284-4225 WWW.CIVIL-TECH.COM



LEGEND

—	CONCRETE/WHOLE STOP
○	# OF PARKING SPACES
■	TYPE "C" INLET
▨	CONCRETE SURFACE
▩	ASPHALT SURFACE

- NOTE:
- BOUNDARY FROM RECORD PLAT
 - TOPO FROM SWF/WMD GIS DATA

PYTHIA PLACE