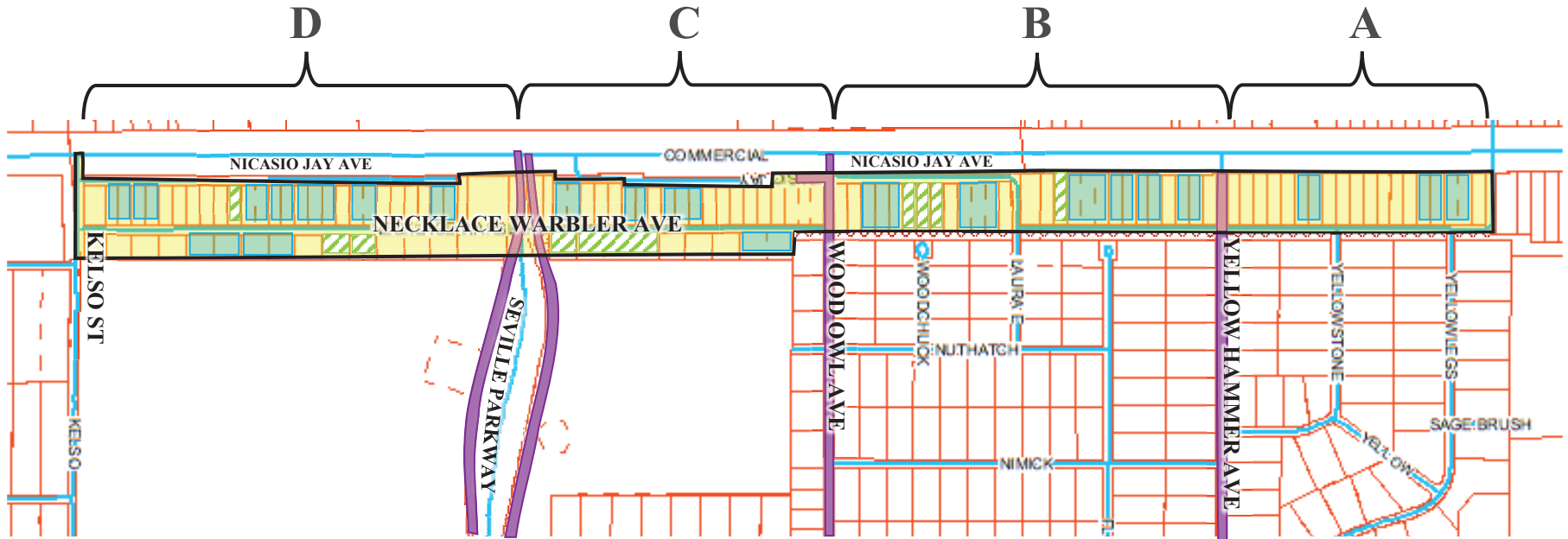


# Necklace Warbler Paving MSBU Boundary



Section	Length	\$/sq ft	BUDGET				ASSESSMENT <sup>1</sup>			UNITY OF TITLE <sup>2</sup>		
			Construction <sup>3</sup>	Engineering	Admin	Total	# Units	Up-Front	Annualized <sup>4</sup>	# Units	Up-Front	Annualized <sup>4</sup>
A - US 19 to Yellow Hammer	1850	\$11.42	\$486,115	\$48,611	\$53,473	\$588,199	19.5	\$30,165	\$4,304	16.5	\$35,648	\$5,086
B - Yellow Hammer to Wood Owl	2500	\$10.65	\$612,153	\$61,215	\$67,337	\$740,706	21.5	\$34,452	\$4,915	12.5	\$59,256	\$8,454
C - Wood Owl to Seville	1700	\$11.75	\$459,433	\$45,943	\$50,538	\$555,914	17.0	\$32,701	\$4,666	13.5	\$41,179	\$5,875
D - Seville & Kelso to US 19	2800	\$10.46	\$673,532	\$67,353	\$74,088	\$814,973	26.5	\$30,754	\$4,388	20.5	\$39,755	\$5,672
<b>Combined</b>	<b>8850</b>	<b>\$10.96</b>	<b>\$2,231,232</b>	<b>\$223,123</b>	<b>\$245,436</b>	<b>\$2,699,791</b>	<b>84.5</b>	<b>\$31,951</b>	<b>\$4,559</b>	<b>63.0</b>	<b>\$42,854</b>	<b>\$6,114</b>

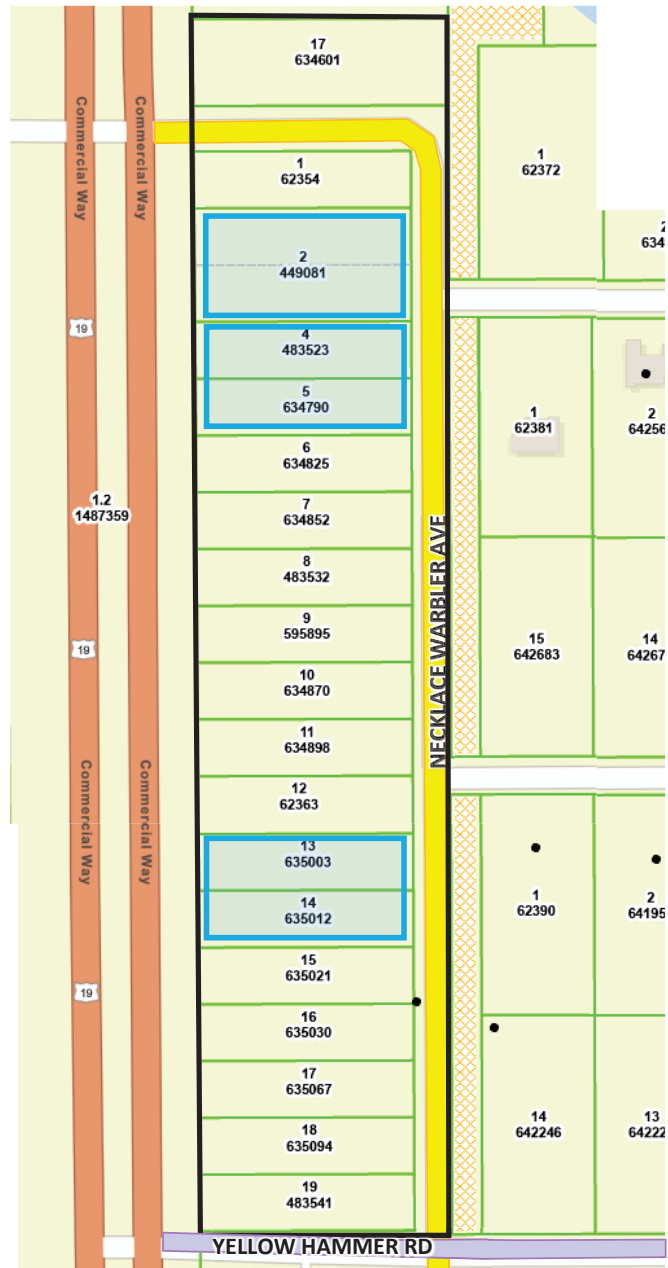
## Legend

- Assessment Boundary
- Existing Paved Road
- Project Limits
- Hernando County Parcels
- Southwest FL Water Mgmt
- Unity of Title Eligible

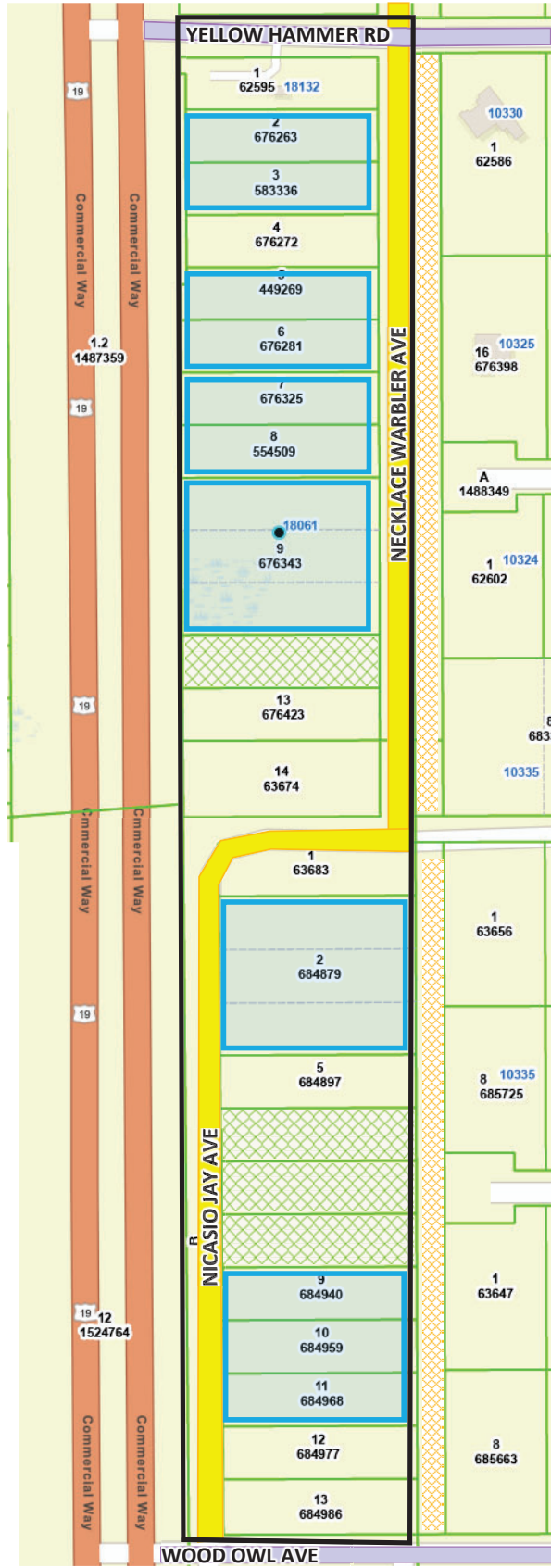
# A

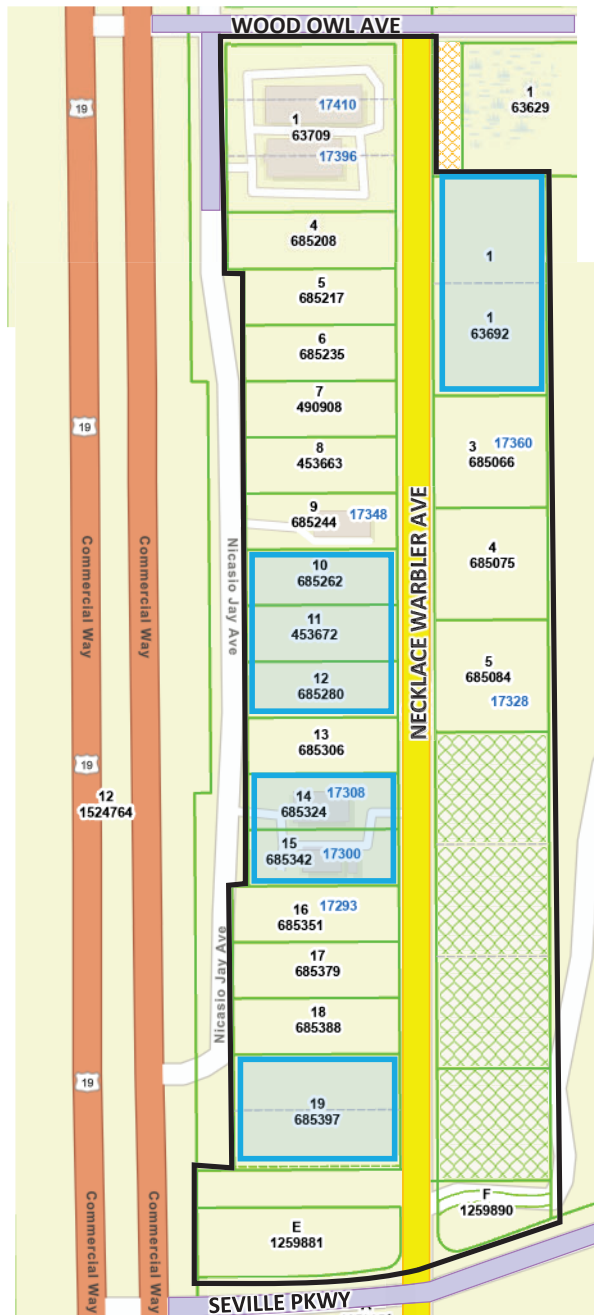
## Legend

- Assessment Boundary
- Existing Paved Road
- Project Limits
- Hernando County Parcels
- Southwest FL Water Mgmt
- Unity of Title Eligible



# B





D

