

Vista Park

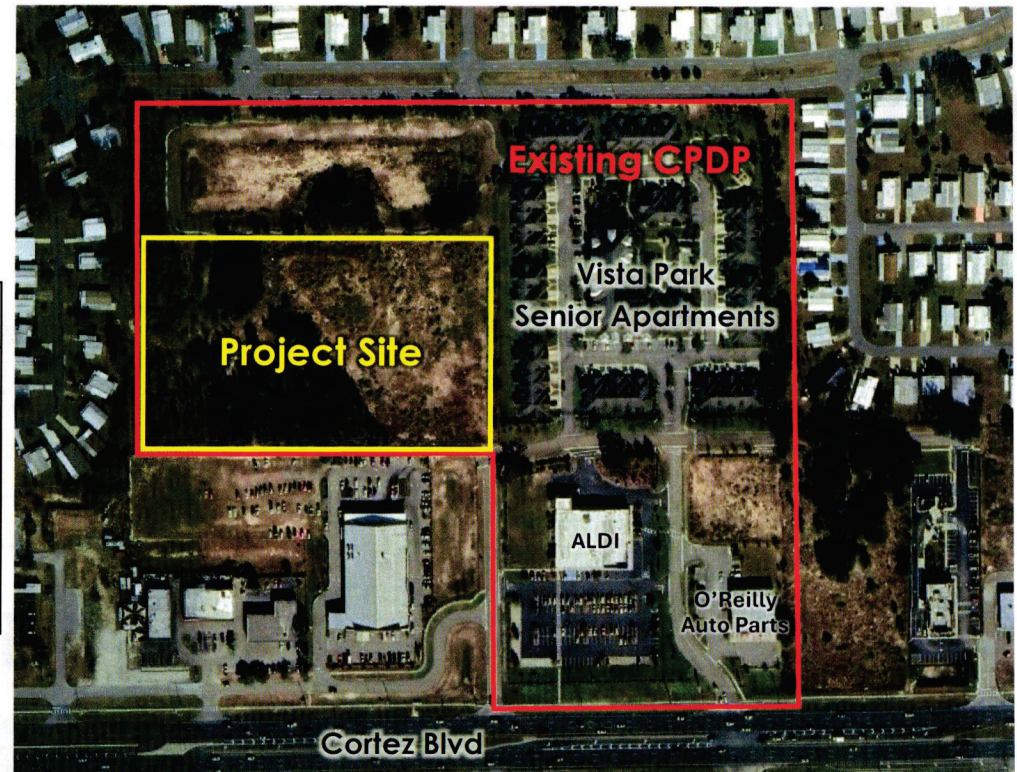
(Rolling Rock THs)

Master Plan Revision

H-24-63



	Approved	Proposed	Change
Units	98 Multi-Family Apartments	76 Platted Townhomes	- 22 units
Density	14.2 du/ac	11 du/ac	- 3.2 du/ac
Height	3-story	2-story	- 1 story



Approved vs. Proposed

- 76 Townhome Lots
- Park Space: +/- 2.12-acre existing park and walking trail north of the project
- Boulevard Entrance
- Exceeds Visitor Parking Requirements



Proposed Plan

- Proposed Internal Lot Setbacks
 - Front: 23 feet to the face of the garage
 - Side: 0/7.5 feet
 - Rear: 15 feet
- Perimeter Setbacks
 - North: 25 feet
 - South: 35 feet
 - East: 25 feet
 - West: 50 feet

