



CLEMENTI ENVIRONMENTAL CONSULTING, LLC

Received

MAY 31 2022

Planning Department
Hernando County, Florida

KET50 TRACT WILDLIFE REPORT HERNANDO COUNTY

This tract is located at the southeast side of SR 50 and Kettering Road, approximately one mile east of I-75 (See Figure 1) in Section 4 Township 23 South Range 21 East, Hernando County, Florida.

Existing Site Conditions

The tract is approximately 23.3 acres and is currently vacant. It appears the tract has been used for grazing cattle (See Figure 2). The east side of the property abuts the Withlacoochee Trail.

Attached is the NRCS soil map (Figure 3) delineating two soil types on the tract: Candler fine sand 0 to 5% slopes (14) and Tavares fine sand 0 to 5% slopes (49).

Candler fine sand 0 to 5% slopes (14) is a nearly level to gently sloping, excessively drained soil in the upland. The water table is usually 80 inches below grade. The native vegetation consists of bluejack, post and turkey oaks with scattered longleaf and slash pines with a sparse understory of Indiangrass, chalky bluestem, pineland threeawn and annual forbs.

Tavares fine sand 0 to 5% slopes (49) is a moderately well drained soil on low ridges and knolls. In most years, the water table is at a depth of 40 to 50 inches except during prolonged dry periods. The native vegetation consists of slash and longleaf pine, blackjack, turkey, and post oaks with an understory of pineland threeawn, creeping bluestem, lopsided Indiangrass, hairy panicum, low panicums, purple lovegrass and broomsedge bluestem.

Figure 2 is an aerial of the parcel and Figure 4 is a map of our pedestrian transects and the gopher tortoise burrows we found. The property is mostly improved pasture with areas of dense cogon grass. There are no wetlands on the property.

Wildlife Survey

A wildlife survey according to the criteria of the Florida Fish and Wildlife Conservation Commission (FWC) was conducted. The wildlife of concern based on their status was researched from sites on the internet. The listed species that could potentially be present

on this property are the gopher tortoise, Southeastern Kestrel, sand skink and burrowing owl.

Two CEC scientists performed a pedestrian wildlife survey as shown on Figure 4. As two people were surveying simultaneously, they used different numbering systems e.g., 100 and 200. There are no open sandy areas suitable for the sand skink. We found 10 potentially occupied gopher tortoise burrows. There was no evidence of burrowing owls. There were several holes in old power poles that appear to be used by woodpeckers. We did not observe any kestrels on the property. It is the breeding season for the kestrel therefore it does not appear that kestrels are nesting in a hole on this tract.

This was a minimal survey possibly 30% of the tract. Based on 30% cover of the tract theoretically there could be 33 burrows. The occupancy rate is considered 50% therefore there is a potential for 15 gopher tortoises. The gopher tortoise is a Florida threatened species. Future development of this tract may require the offsite relocation of these tortoises. A more extensive/coverage survey should be accomplished to determine the approximate size of the population on the property.

KET50

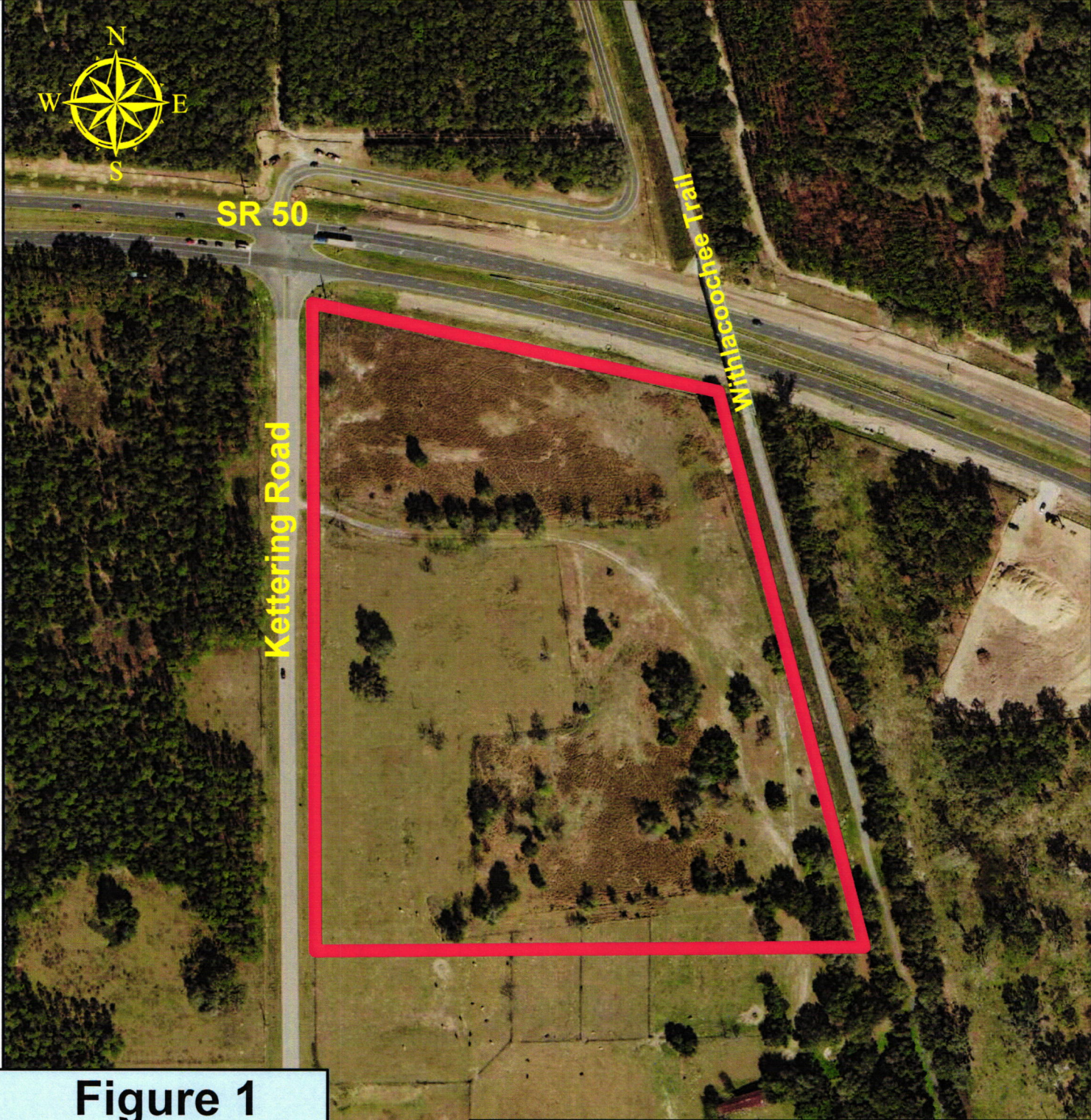


Figure 1
Location Map



Ket50

CLEMENTI ENVIRONMENTAL CONSULTING
620 EAST TWIGGS STREET STE 200
TAMPA, FL 33602
WWW.CLEMENTI-EC.COM



CLEMENTI ENVIRONMENTAL CONSULTING, LLC

KET50



Figure 2
Aerial

CLEMENTI ENVIRONMENTAL CONSULTING
620 EAST TWIGGS STREET STE 200
TAMPA, FL 33602
WWW.CLEMENTI-EC.COM



CLEMENTI ENVIRONMENTAL CONSULTING, LLC

Ket50

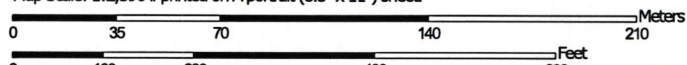
Figure 3

Soil Map—Hernando County, Florida



Soil Map may not be valid at this scale.

Map Scale: 1:2,390 if printed on A portrait (8.5" x 11") sheet.



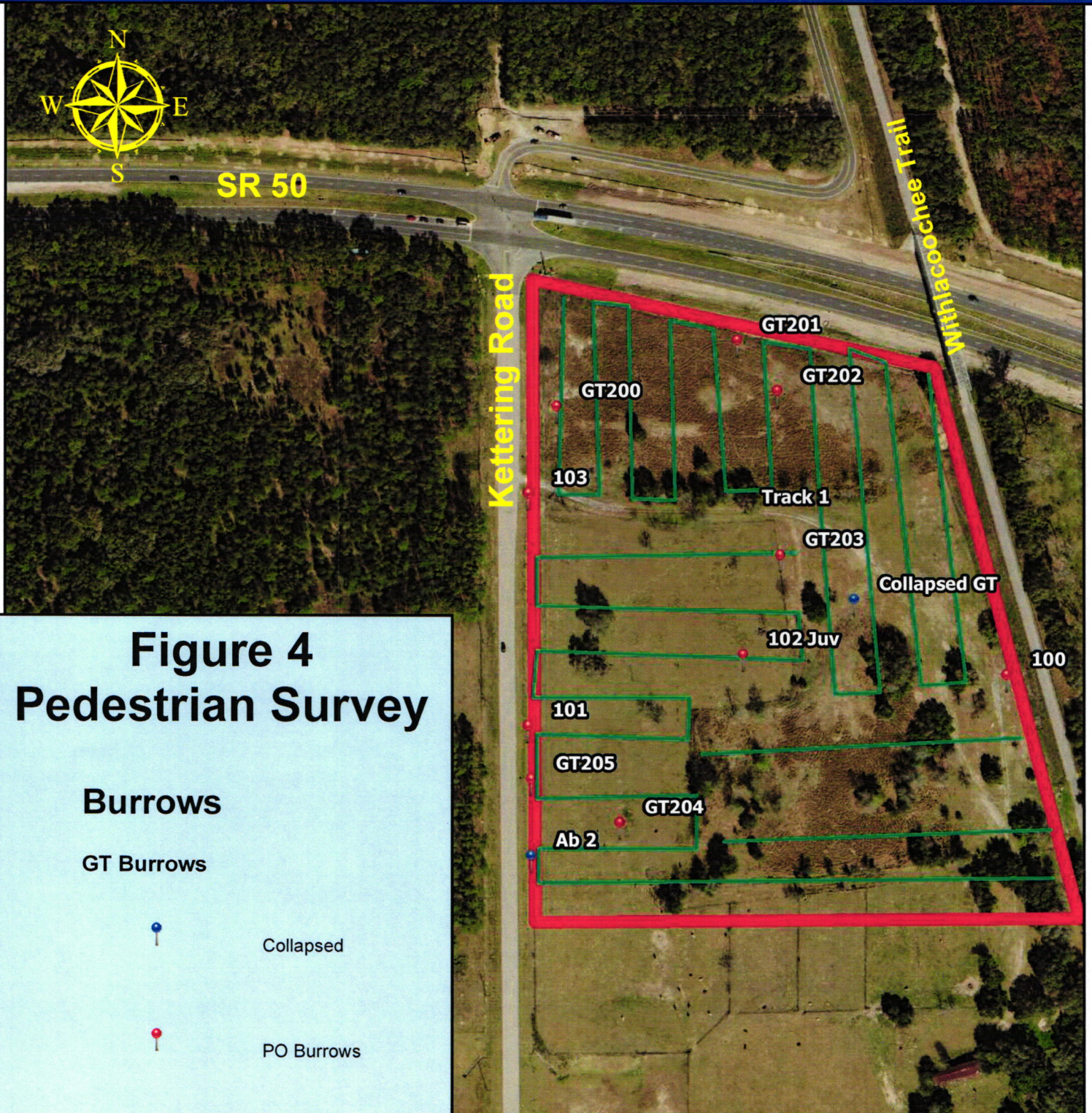
Map projection: Web Mercator Corner coordinates: WGS84 Edge tics: UTM Zone 17N WGS84



Map Unit Legend

Map Unit Symbol	Map Unit Name	Acres in AOI	Percent of AOI
14	Candler fine sand, 0 to 5 percent slopes	18.7	89.0%
49	Tavares fine sand, 0 to 5 percent slopes	2.3	11.0%
Totals for Area of Interest		21.0	100.0%

KET50



**Figure 4
Pedestrian Survey**

Burrows

GT Burrows



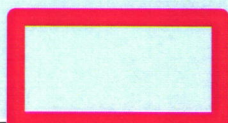
Collapsed



PO Burrows



Transects



Ket50

CLEMENTI ENVIRONMENTAL CONSULTING
620 EAST TWIGGS STREET STE 200
TAMPA, FL 33602
WWW.CLEMENTI-EC.COM

