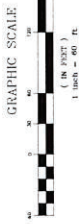


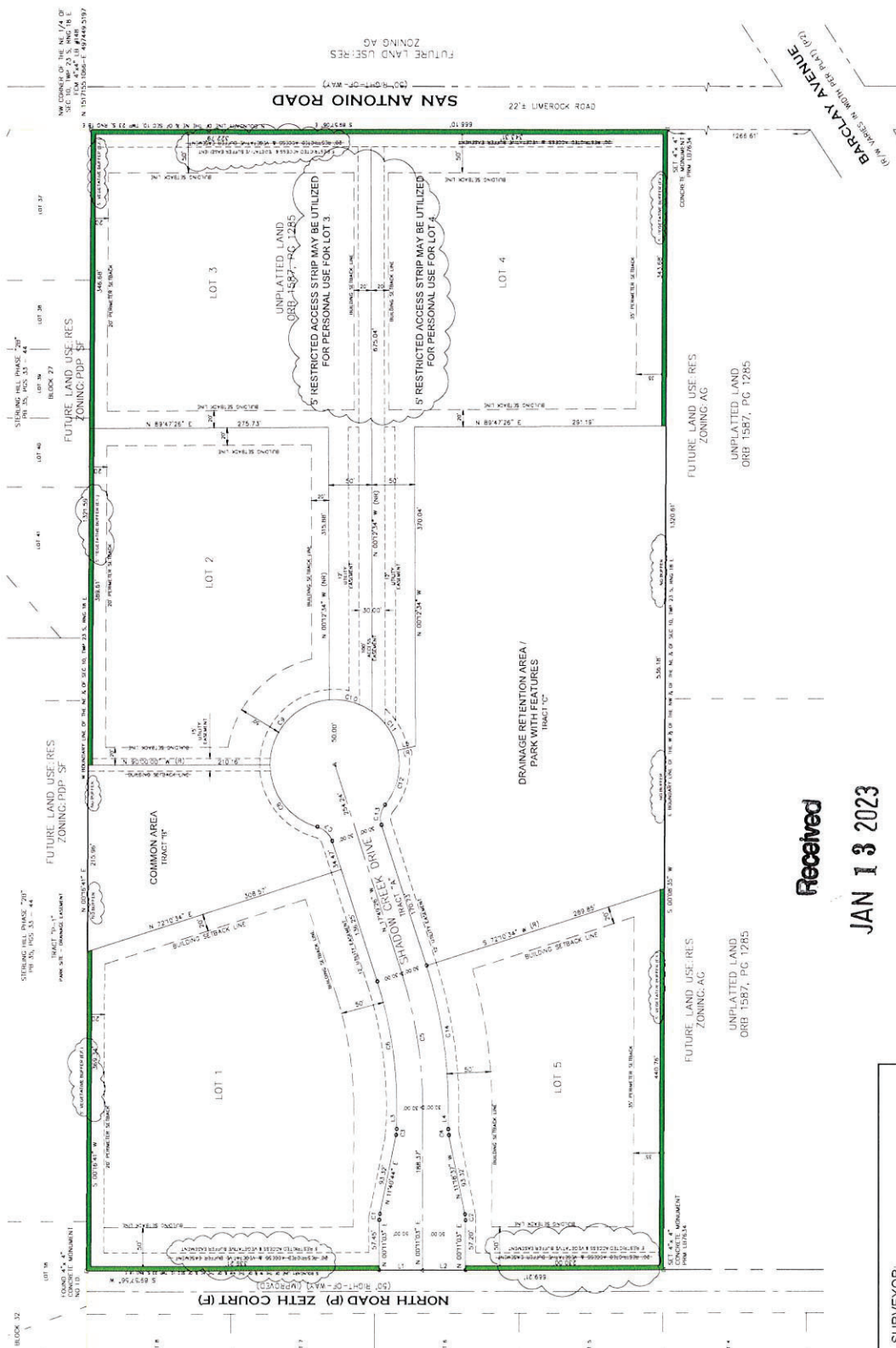
# SILVER FALLS REV MASTER PLAN

A SUBDIVISION OF A PORTION OF SECTION 10, TOWNSHIP 23 SOUTH, RANGE 18 EAST, HERNANDO COUNTY, FLORIDA AND A REPLAT OF THE WEST 1/2 OF THE NORTHWEST OF THE NORTHEAST 1/4 OF SECTION 10, TOWNSHIP 23 S, RANGE 10 E



**LEGEND**

- = SET IN STAKE AND PLACED ON "SUBMIT" COPY
- △ = SET IN STAKE AND PLACED ON "STAMPED" COPY
- = PERMANENT REFERENCE MONUMENT
- = PERMANENT CONTROL POINT
- = PROPERTY ACTION
- (H) = HEAVY
- (D) = DOWNS



LINE	LENGTH	BEARING
L1	50.00	N89°47'26" E
L2	275.73	S00°00'00" W
L3	275.73	S00°00'00" W
L4	275.73	S00°00'00" W
L5	275.73	S00°00'00" W
L6	275.73	S00°00'00" W
L7	275.73	S00°00'00" W
L8	275.73	S00°00'00" W
L9	275.73	S00°00'00" W
L10	275.73	S00°00'00" W
L11	275.73	S00°00'00" W
L12	275.73	S00°00'00" W
L13	275.73	S00°00'00" W
L14	275.73	S00°00'00" W
L15	275.73	S00°00'00" W
L16	275.73	S00°00'00" W
L17	275.73	S00°00'00" W
L18	275.73	S00°00'00" W
L19	275.73	S00°00'00" W
L20	275.73	S00°00'00" W
L21	275.73	S00°00'00" W
L22	275.73	S00°00'00" W
L23	275.73	S00°00'00" W
L24	275.73	S00°00'00" W
L25	275.73	S00°00'00" W
L26	275.73	S00°00'00" W
L27	275.73	S00°00'00" W
L28	275.73	S00°00'00" W
L29	275.73	S00°00'00" W
L30	275.73	S00°00'00" W
L31	275.73	S00°00'00" W
L32	275.73	S00°00'00" W
L33	275.73	S00°00'00" W
L34	275.73	S00°00'00" W
L35	275.73	S00°00'00" W
L36	275.73	S00°00'00" W
L37	275.73	S00°00'00" W
L38	275.73	S00°00'00" W
L39	275.73	S00°00'00" W
L40	275.73	S00°00'00" W
L41	275.73	S00°00'00" W
L42	275.73	S00°00'00" W
L43	275.73	S00°00'00" W
L44	275.73	S00°00'00" W
L45	275.73	S00°00'00" W
L46	275.73	S00°00'00" W
L47	275.73	S00°00'00" W
L48	275.73	S00°00'00" W
L49	275.73	S00°00'00" W
L50	275.73	S00°00'00" W

**Received**  
**JAN 13 2023**

**SURVEYOR:**  
**GLOBAL SURVEYING OF BROOKSVILLE**  
 1000 JAMES L. HARRIS DRIVE  
 BROOKSVILLE, FLORIDA 34601  
 CERTIFICATE OF AUTHORIZATION LB 007634

**PRO CIVIL 360**  
 CIVIL ENGINEERING, SURVEYING, & COMMERCIAL SITE DEVELOPMENT  
 1000 JAMES L. HARRIS DRIVE, BROOKSVILLE, FLORIDA 34601  
 (352) 877-1111

**REVISED MASTER PLAN**  
 SILVER FALLS