

WALLER

CONSTRUCTION INCORPORATED

CBC 059067

Generations of Excellence Since 1961

REQUEST FOR CHANGE ORDER

ONE (1)

FROM : WALLER CONSTRUCTION, INC.
1065 South Florida Avenue
Lakeland, FL 33803

DATE : October 31, 2023.

TO: BOCC Hernando County
15470 Flight Path Drive
Procurement Department
Brooksville, FL 34604

PROJECT: Rotary Splash Pad at the
Anderson Snow Sports Complex
1360 Anderson Snow Road
Spring Hill, FL

ATTN: Keith Larson; Jeremy Burgess

CONTRACT NO. 23-C00045/GL

PO#: 23001015

JOB NUMBER: 23-0092-CM

DESCRIPTION OF WORK	COST CODE	AMOUNT
Furnish Labor, Equipment, Materials and Supervision to make changes to the following items as per Change Order Bulletin #1 dated 7/21/2023. (Copy attached) L-1 Added Plan		
Maintenance Area Improvements		
Add 5" of CC base	15,000 SF	\$10,109.75
Add 3" Recycles #57 Stone	15,000 SF	\$9,684.73
Trucking	26 Loads	\$4,933.50
Spread & Compact	557 Tons	\$5,636.60
New Turf Grow Area		
Import Fill (In place) Net	311 CY	\$5,610.10
Turf Grow Area	591 CY	\$6,417.00
Credit for Storage Bin Block Walls in original Maintenance Bldg Lump Sum Price		(\$5,097.00)
NOTE: Irrigation and Landscape are by County Staff.		
	Sub-Total	\$37,294.68
	Bond Upcharge	\$932.00
	TOTAL RCO#1	\$38,226.68

APPROVED BY :
WALLER CONSTRUCTION, INC.

Jackie Staton

Jackie Staton - Project Manager

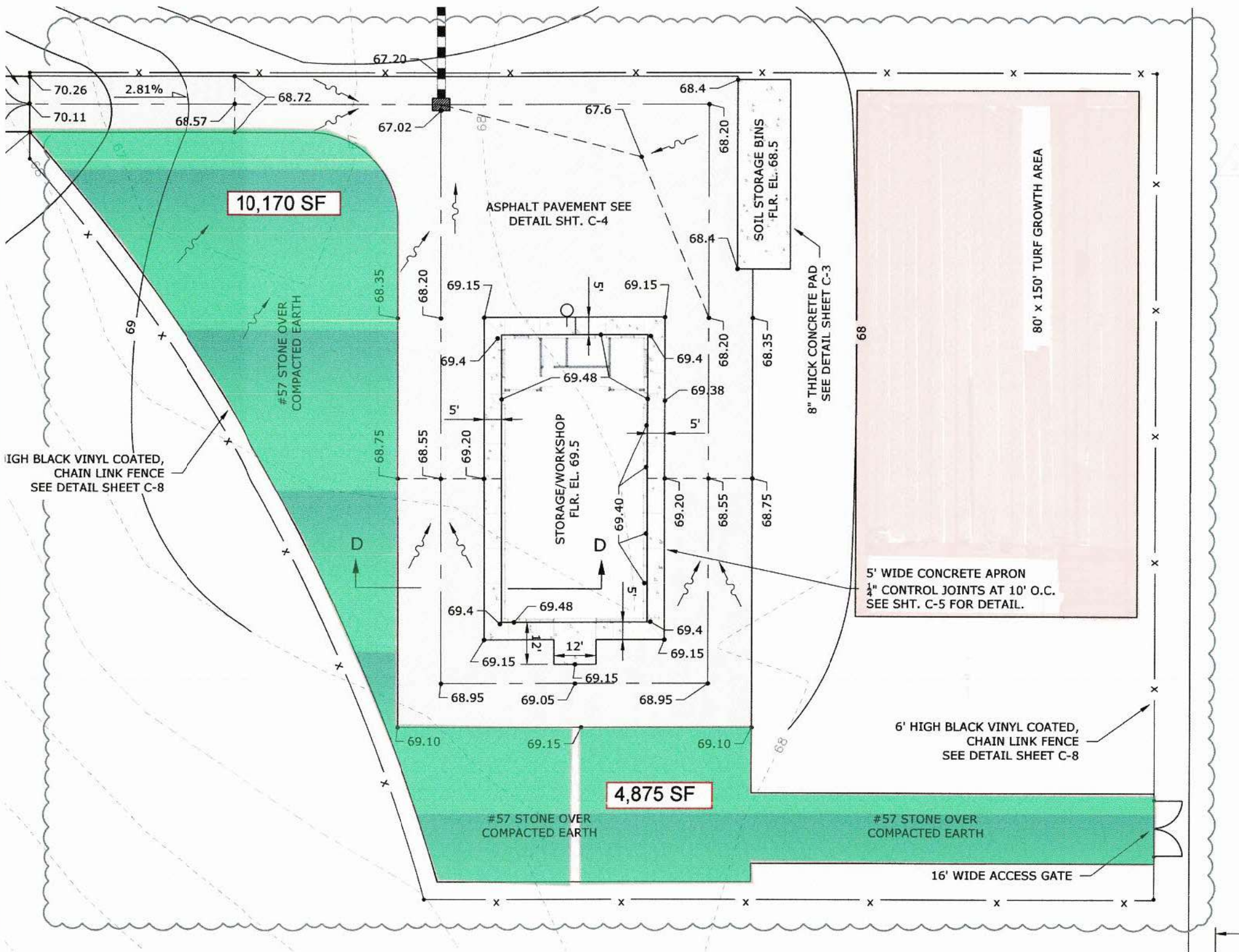
OWNERS REPRESENTATIVE
BOCC Hernando County



APPROVED:

DATE : October 23, 2023.

DATE: 11 / 06 / 2023



10,170 SF

4,875 SF

6' HIGH BLACK VINYL COATED,
CHAIN LINK FENCE
SEE DETAIL SHEET C-8

ASPHALT PAVEMENT SEE
DETAIL SHT. C-4

SOIL STORAGE BINS
FLR. EL. 68.5

8" THICK CONCRETE PAD
SEE DETAIL SHEET C-3

5' WIDE CONCRETE APRON
1/4" CONTROL JOINTS AT 10' O.C.
SEE SHT. C-5 FOR DETAIL.

6' HIGH BLACK VINYL COATED,
CHAIN LINK FENCE
SEE DETAIL SHEET C-8

16' WIDE ACCESS GATE

#57 STONE OVER
COMPACTED EARTH

#57 STONE OVER
COMPACTED EARTH

#57 STONE OVER
COMPACTED EARTH

80' x 150' TURF GROWTH AREA

STORAGE/WORKSHOP
FLR. EL. 69.5

70.26
70.11

2.81%

68.57

68.72

67.20

67.02

67.6

68.4

68.20

68.4

68.4

69.15

69.15

69.4

69.4

69.38

69.40

69.20

69.20

68.55

68.75

68.35

68.20

69.15

69.4

69.4

69.48

69.4

69.4

69.15

68.95

69.05

69.15

68.95

69.10

69.15

69.10

68

68