

ATLANTA AVENUE

ATLANTA AVENUE

U.S. HWY 19 (COMMERCIAL WAY)

+/- 379'

+/- 800'

125' SETBACK

50' SETBACK

PROPOSED  
FIRE STATION 16  
+/- 11,600 GSF

PARKING

(ACCESS DRIVE) RICHMOND STREET

+/- 730'

50' SETBACK

PROPOSED  
STORMWATER  
POND  
APPROXIMATE SIZE

50' SETBACK

+/- 378'

+/- 167'

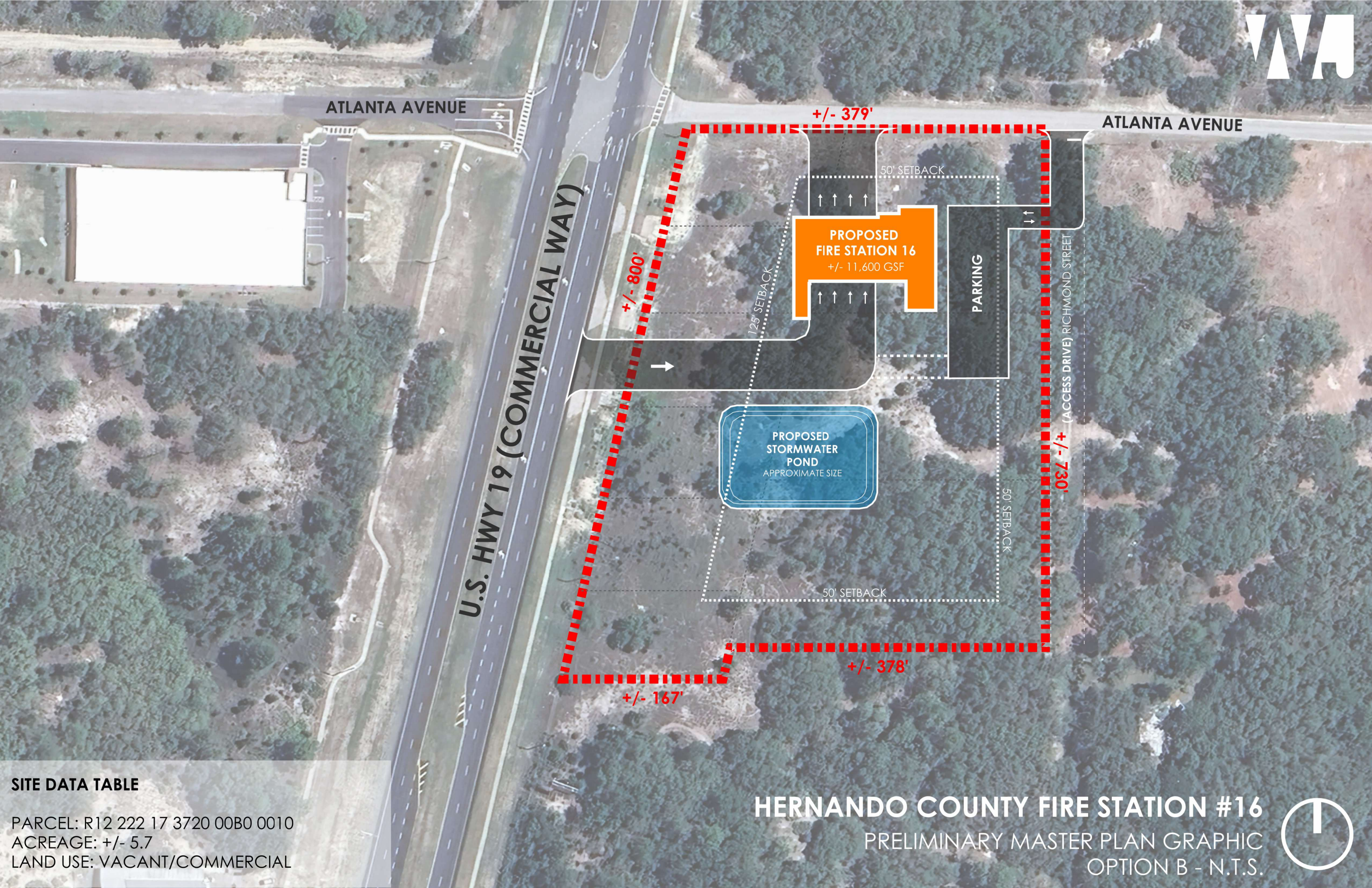
**SITE DATA TABLE**

PARCEL: R12 222 17 3720 00B0 0010  
ACREAGE: +/- 5.7  
LAND USE: VACANT/COMMERCIAL

**HERNANDO COUNTY FIRE STATION #16**

PRELIMINARY MASTER PLAN GRAPHIC  
OPTION A - N.T.S.





ATLANTA AVENUE

ATLANTA AVENUE

U.S. HWY 19 (COMMERCIAL WAY)

+/- 379'

+/- 800'

PROPOSED  
FIRE STATION 16  
+/- 11,600 GSF

PARKING

PROPOSED  
STORMWATER  
POND  
APPROXIMATE SIZE

+/- 730'

+/- 167'

+/- 378'

**SITE DATA TABLE**

PARCEL: R12 222 17 3720 00B0 0010  
ACREAGE: +/- 5.7  
LAND USE: VACANT/COMMERCIAL

**HERNANDO COUNTY FIRE STATION #16**

PRELIMINARY MASTER PLAN GRAPHIC  
OPTION B - N.T.S.

