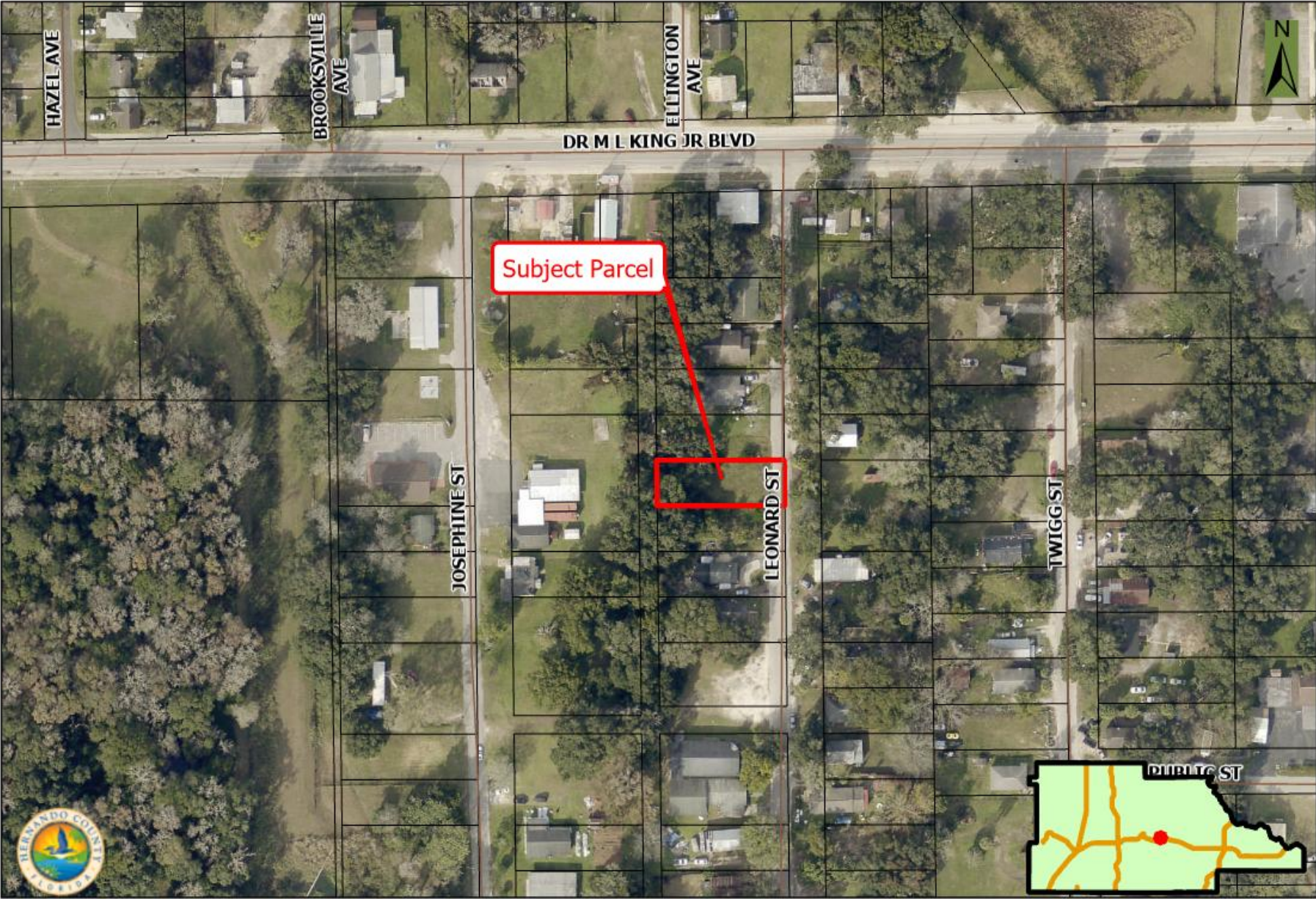


H-26-14 Aerial Map

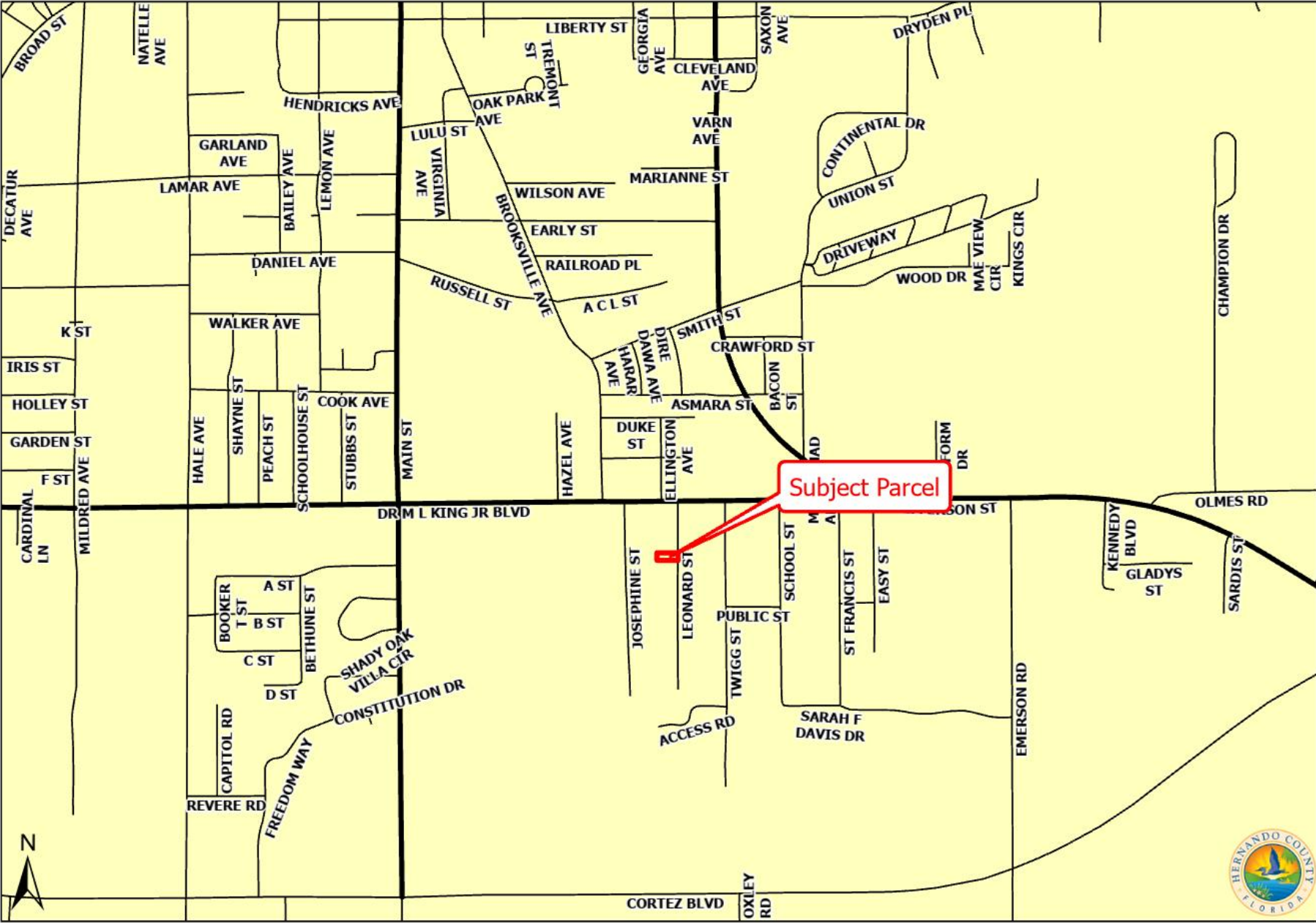
This map was prepared by this office to be used as aid and land parcel location and identification only. All land locations, right-of-ways widths, acreages, and utility locations are subject to field survey or other appropriate verification.



Not to Scale.

H-26-14 Area Map

This map was prepared by this office to be used as aid and land parcel location and identification only. All land locations, right-of-ways widths, acreages, and utility locations are subject to field survey or other appropriate verification.

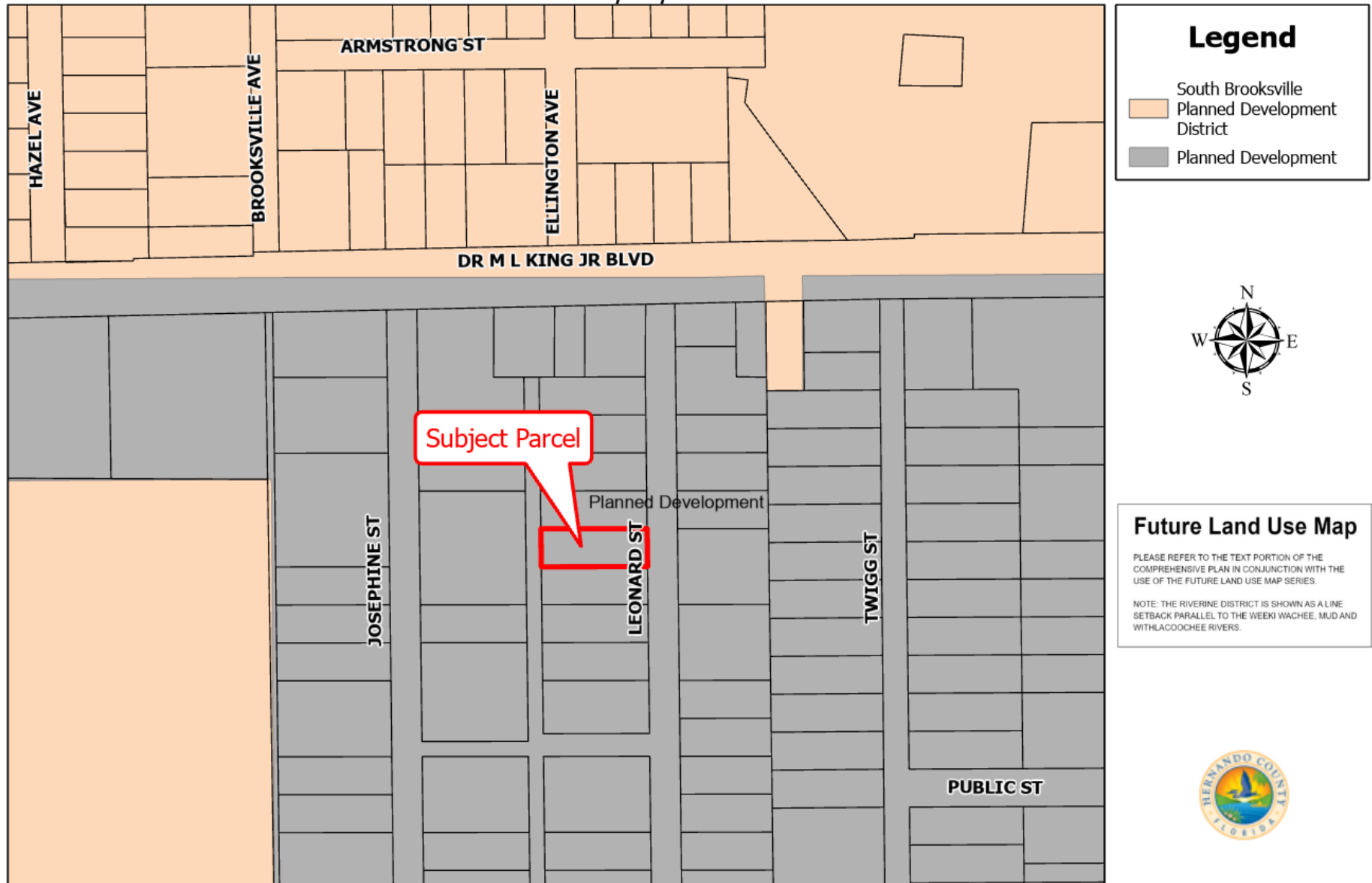


Not to Scale.

Hernando County Comprehensive Plan Map

Existing Future Land Use: H-26-14

Version Date: 5/11/2026

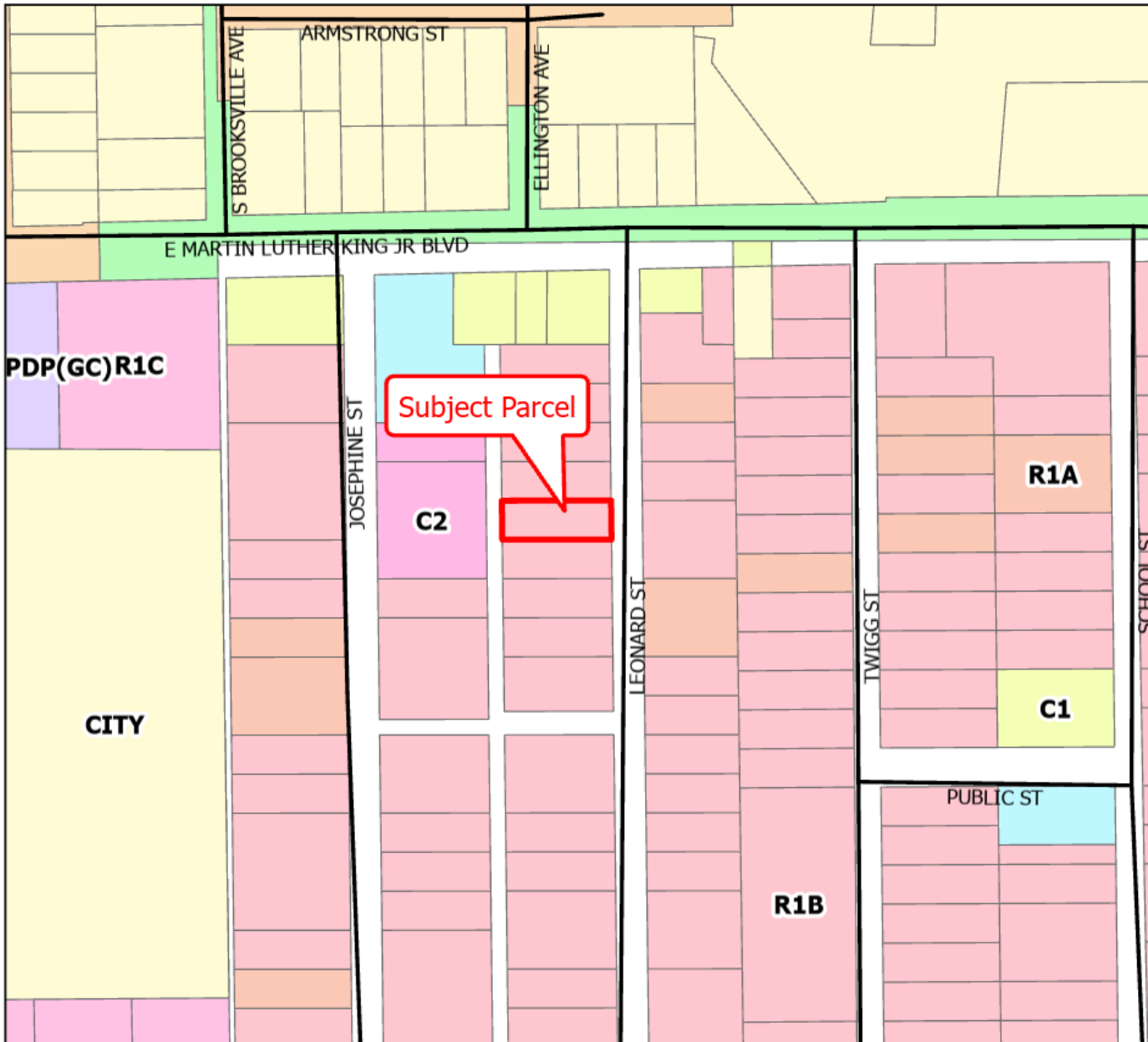


Not to Scale.



H-26-14 Zoning Map

This map was prepared by this office to be used as aid and land parcel location and identification only. All land locations, right-of-ways widths, acreages, and utility locations are subject to field survey or other appropriate verification.



Legend

- <Null>
- C1
- C2
- CITY
- PDP(GC)
- R1A
- R1B
- R1C

