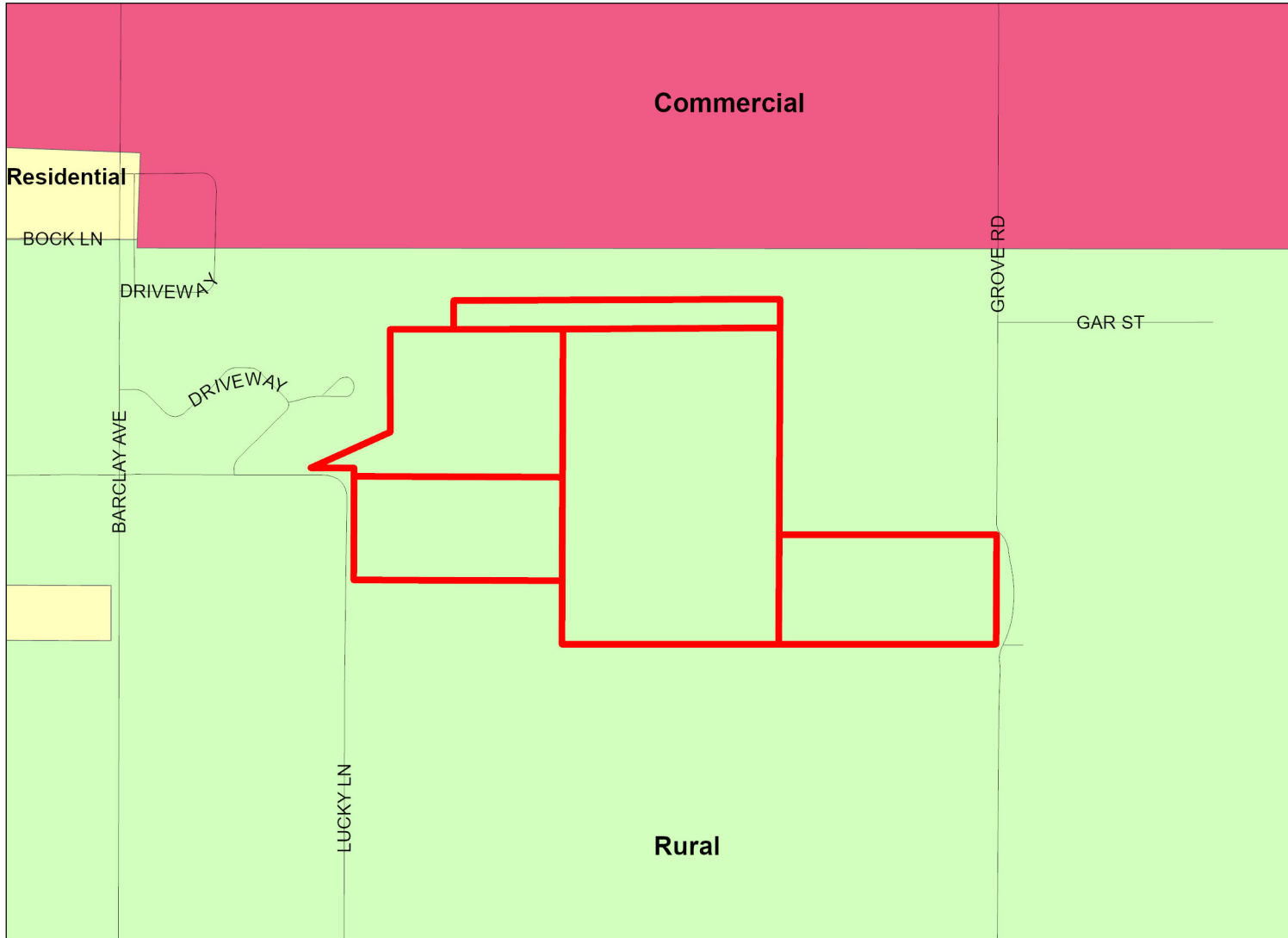


# Hernando County Comprehensive Plan Map

Existing Future Land Use: H-23-76  
Version Date: 12/09/2022



**H-23-76**

FLU Riverine District

Regional Commercial

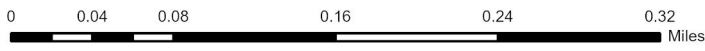
**FLU**

- CITY
- COMMERCIAL
- CONSERVATION
- EDUCATION
- INDUSTRIAL
- MINING
- PLANNED DEVELOPMENT
- PUBLIC FACILITIES
- RECREATION
- RESIDENTIAL
- RURAL

**Future Land Use Map**

PLEASE REFER TO THE TEXT PORTION OF THE COMPREHENSIVE PLAN IN CONJUNCTION WITH THE USE OF THE FUTURE LAND USE MAP SERIES.

NOTE: THE RIVERINE DISTRICT IS SHOWN AS A LINE SETBACK PARALLEL TO THE WEEKI WACHEE, MUD AND WITHLACOOCHEE RIVERS.



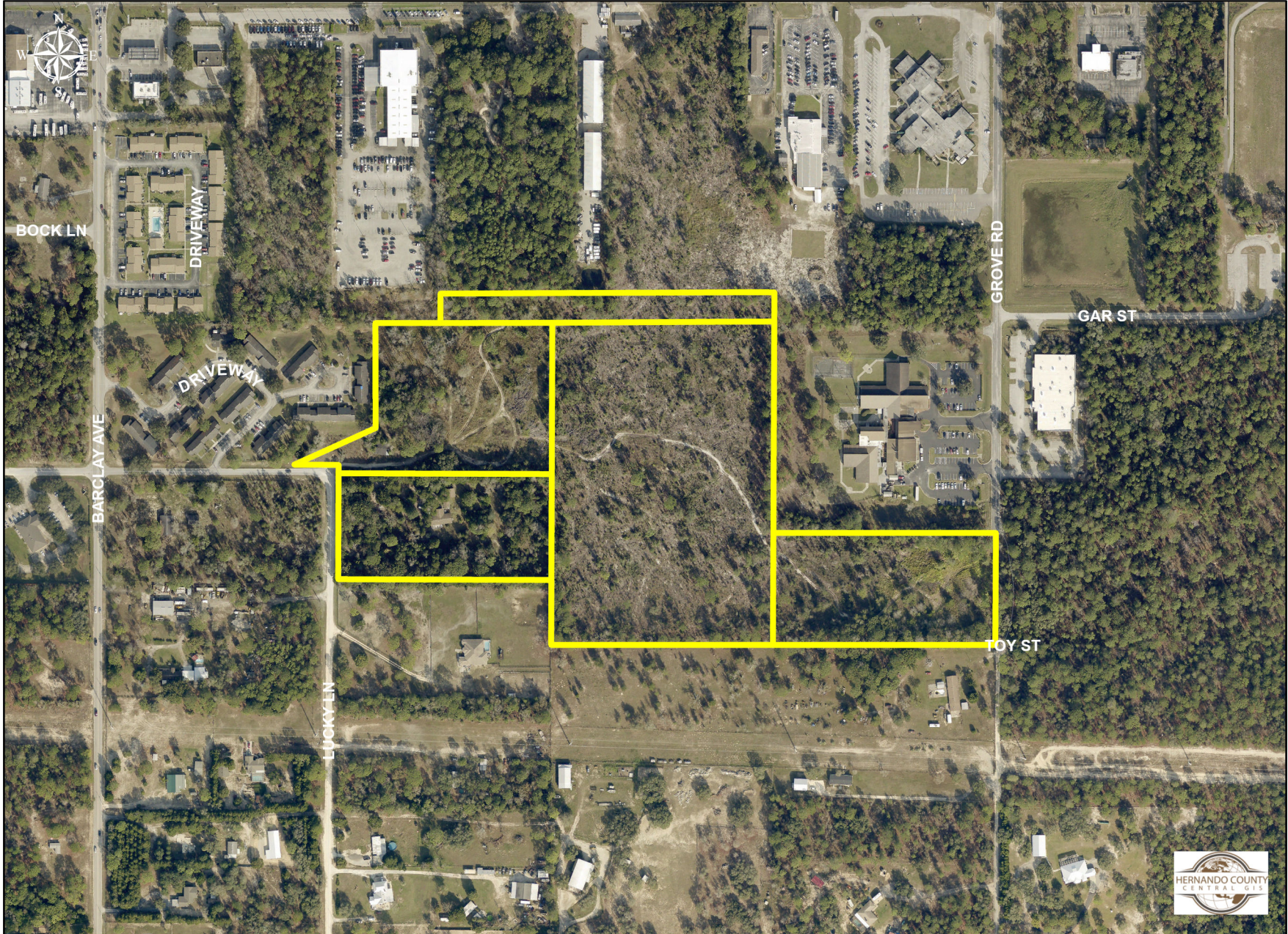
Date of mapping: 01/31/2024



# H-23-76

Photo date: 2023

This map was prepared by this office to be used as an aid in land parcel location and identification only. All land locations, right-of-way widths, acreages, and utility locations are subject to field survey or other appropriate verification.

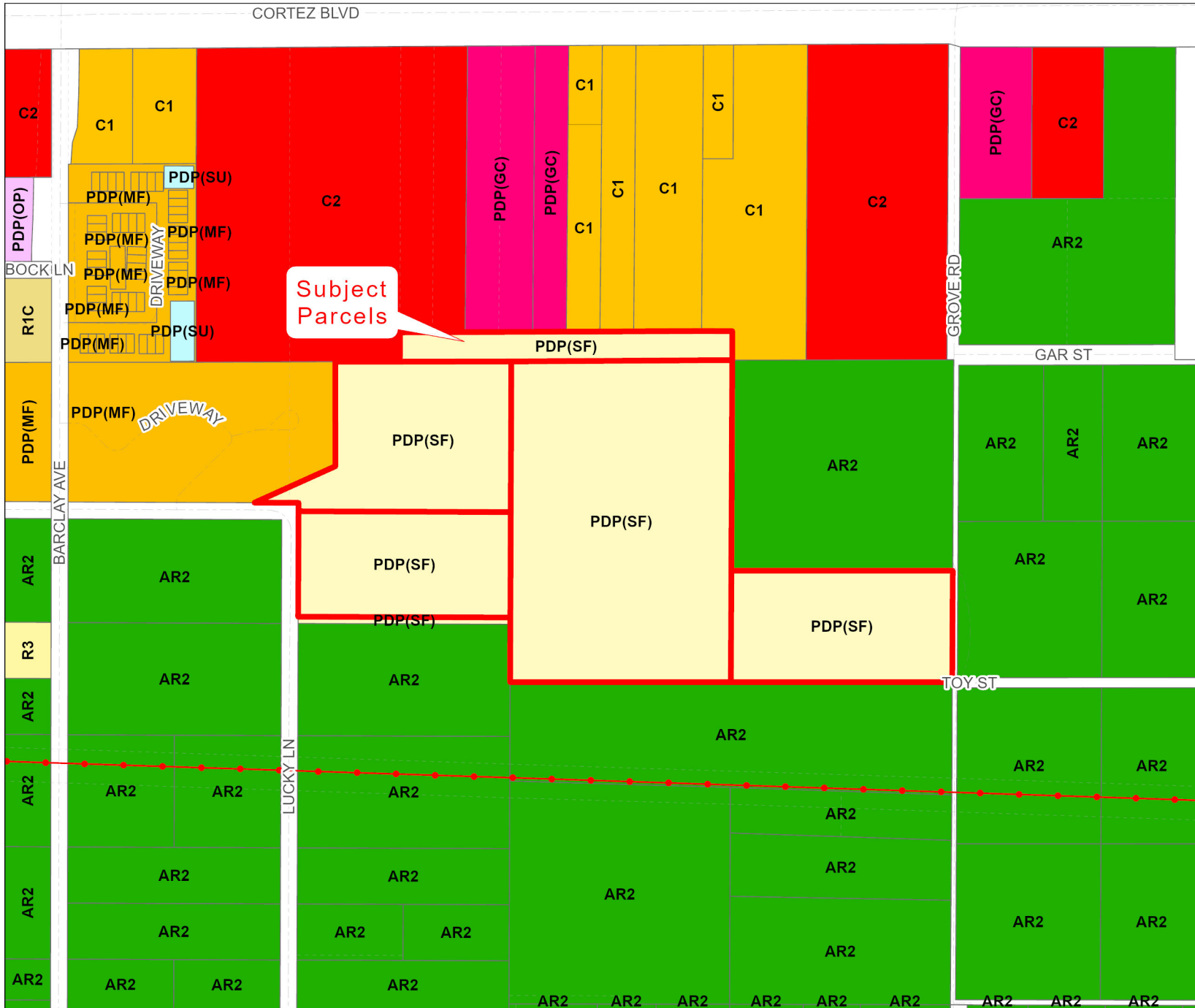


0 0.03 0.07 0.13 0.2 0.26 Miles



# H-23-76

This map was prepared by this office to be used as an aid in land parcel location and identification only. All land locations, right-of-way widths, acreages, and utility locations are subject to field survey or other appropriate verification.



**Zoning:**

AC	PDP(HC)
AG	PDP(HHC)
AR	PDP(HID)
AR1	PDP(IND)
AR2	PDP(LI)
C1	PDP(MF)
C2	PDP(MH)
C3	PDP(MH)
C4	PDP(MH)
CITY	PDP(MH)
CM1	PDP(MH)
CM2	PDP(MH)
CPDP	PDP(MH)
CV	PDP(MH)
I1	PDP(MH)
I2	PDP(MH)
M	PDP(MH)
OP	PDP(MH)
PDP(AF)	PDP(MH)
PDP(CM)	PDP(MH)
PDP(CP)	PDP(MH)
PDP(GC)	PDP(MH)
PDP(GHC)	PDP(MH)
	PDP(NC)
	PDP(OP)
	PDP(PSF)
	PDP(REC)
	PDP(RR)
	PDP(RUR)
	PDP(SF)
	PDP(SU)
	R1A
	R1B
	R1C
	R1MH
	R2
	R2.5
	R3
	RC
	RM

City Zoning Pending

