



Weeki Wachee River SAV Restoration Project

Month 2 Maintenance Report

FDEP PERMIT NUMBER: 27-0192455-004-EI

ACOE PERMIT NUMBER: SAJ-2019-01203

Prepared On:
August 20th, 2025

Prepared For:
Fish & Wildlife Foundation of Florida
P.O. Box 1101
Tallahassee, Florida 32302
Attn: Tindl Rainey

Prepared By:
Sea & Shoreline, LLC
4331 Cockroach Bay Rd
Ruskin, FL 33570

Date of Work Accomplished

The second monthly maintenance event for the Weeki Wachee River SAV Restoration Project was performed on August 5th, 2025.

Tasks Accomplished

1. Monitored Plant Growth and Survival
2. Removed biofouling from the GrowSAV™ Herbivory Exclusion Devices

Task Description

1. **Monitored Plant Growth and Survival** – A team of Sea & Shoreline biologists monitored planting units. Plant growth and survival were noted, and any displaced planting units were carefully replanted by hand. Monitoring was performed in water using a mask and snorkel.
2. **Removed biofouling from the GrowSAV™ Herbivory Exclusion Devices** – Biofouling that had accumulated on the top and side mesh of the GrowSAV Herbivory Exclusion Devices was removed by a team of Sea & Shoreline biologists using stiff-bristled scrub brushes. All biofouling removal was performed in water using a mask and snorkel.

Notes and Event Summary

Month 2 Maintenance and Monitoring Event

The second monthly maintenance event for the Weeki Wachee River SAV Restoration Project occurred on August 5th, 2025. The GrowSAV™ Herbivory Exclusion Devices exhibited light to moderate levels of biofouling. The biofouling primarily consisted of settled sediments and attached filamentous algae; all devices remained in place. Sea & Shoreline biologists removed biofouling from the top and side mesh on mask and snorkel using stiff-bristled scrub brushes.

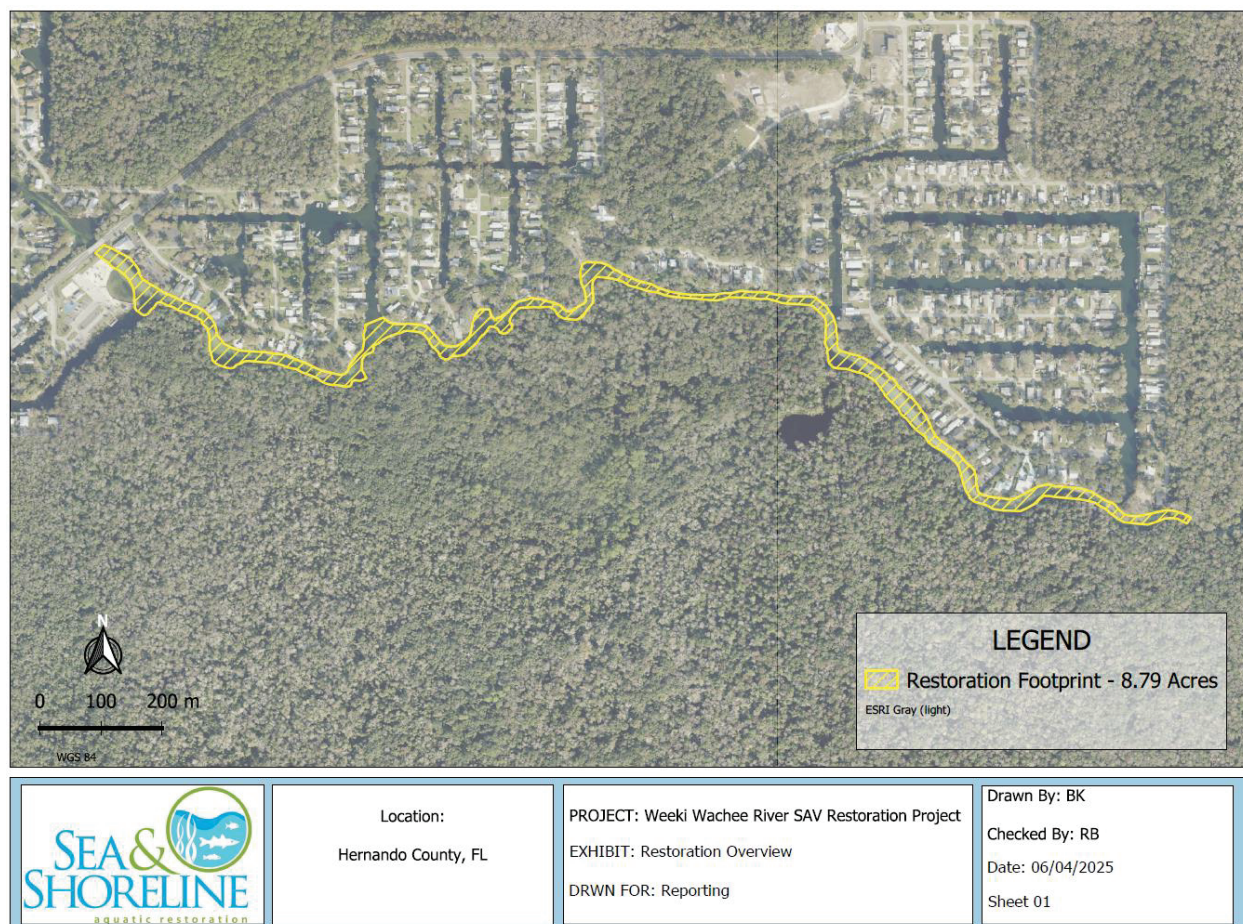
Only two months after installation, both unprotected and protected planting units are showing very encouraging signs of growth and establishment. It is estimated that *V. neotropicalis* is present in 130/132 (98%) of the GrowSAV™ Herbivory Exclusion Devices, with coverages ranging from 0.5 to 3 on the Braun-Blanquet coverage scale. The blade height of protected units varies from 10 to 60 cm, with some units extending beyond the top of their associated device. Signs of lateral expansion beyond protective devices were also observed throughout approximately 50% of devices. Protected planting units still have greater blade heights than the surrounding unprotected units, which is expected due to grazing pressure in the area. Blade heights of unprotected units remain unchanged, ranging anywhere from 3 to 10 cm, with an average of 5 cm. Visible signs of lateral expansion were observed in unprotected planting units throughout the restoration footprint (**Figure 4**).

A dense algae bloom was observed in the footprint, mainly concentrated along the shorelines (**Figure 8**). Currently, the bloom does not appear to be impacting the planting units.

Recommendations and Rectifications

There are no recommendations or rectifications at this time, the algae bloom and its impact on the planting units will continue to be monitored. Following the second monthly maintenance event, planting units are continuing to show encouraging signs of growth. Maintenance will continue for the next ten months, with the third event taking place in the next couple of weeks.

Maps.



Map 1 – Overview of Restoration Area.



Map 2 – Overview of GrowSAV™ Herbivory Exclusion Device Installation Locations.

Figures.



Figure 1. Example of biofouling prior to removal.



Figure 2. Example of Sea & Shoreline biologist removing biofouling.

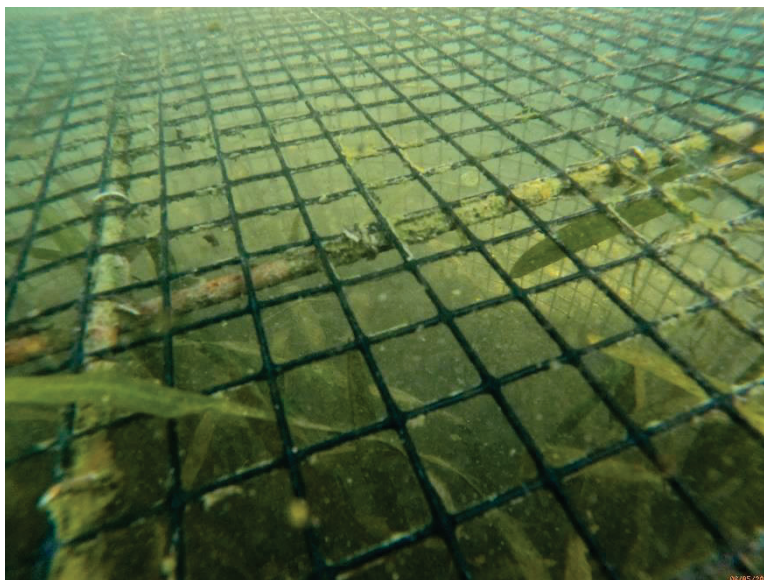


Figure 3. Example of GrowSAV Device after biofouling removal.

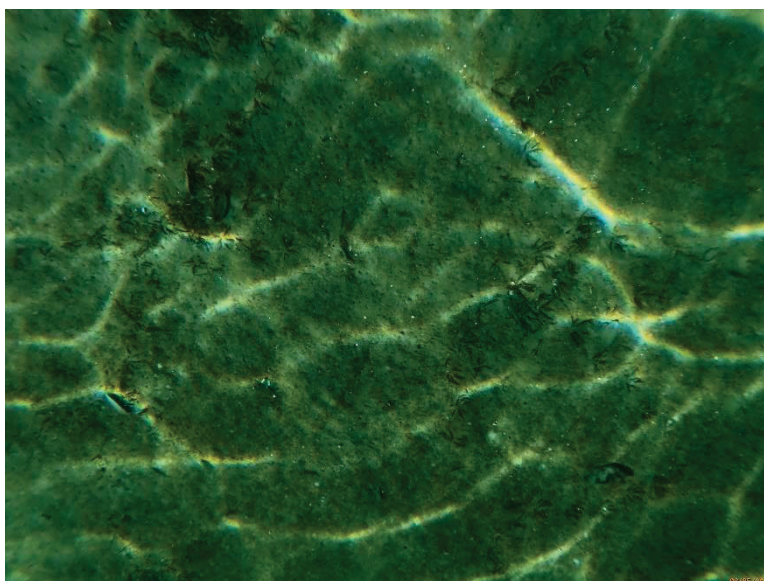


Figure 4. Example of unprotected units showing signs of lateral expansion.



Figure 5. Example of unprotected planting units.



Figure 6. Example of protected units expanding beyond their associated device.



Figure 7. Example of protected units extending beyond their associated device.

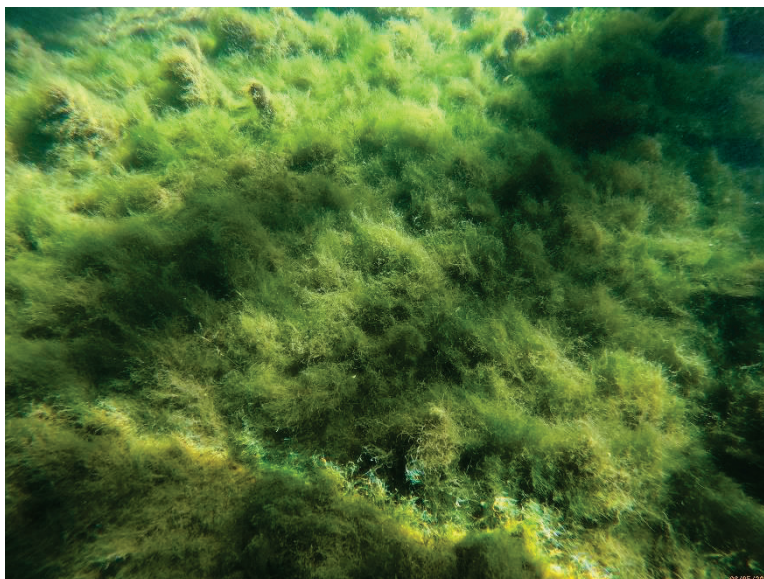


Figure 8. Example of an algae bloom in the area.