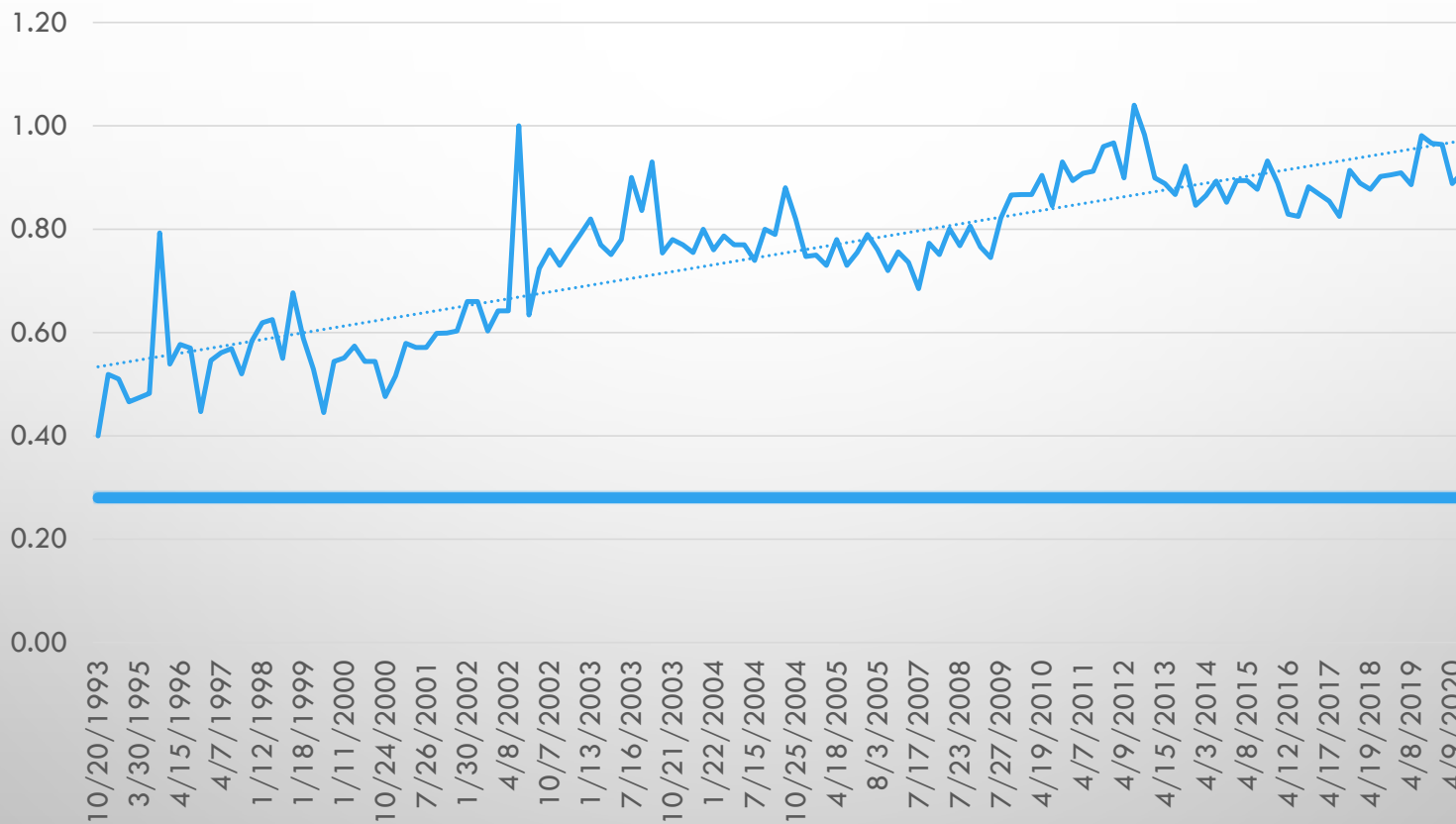


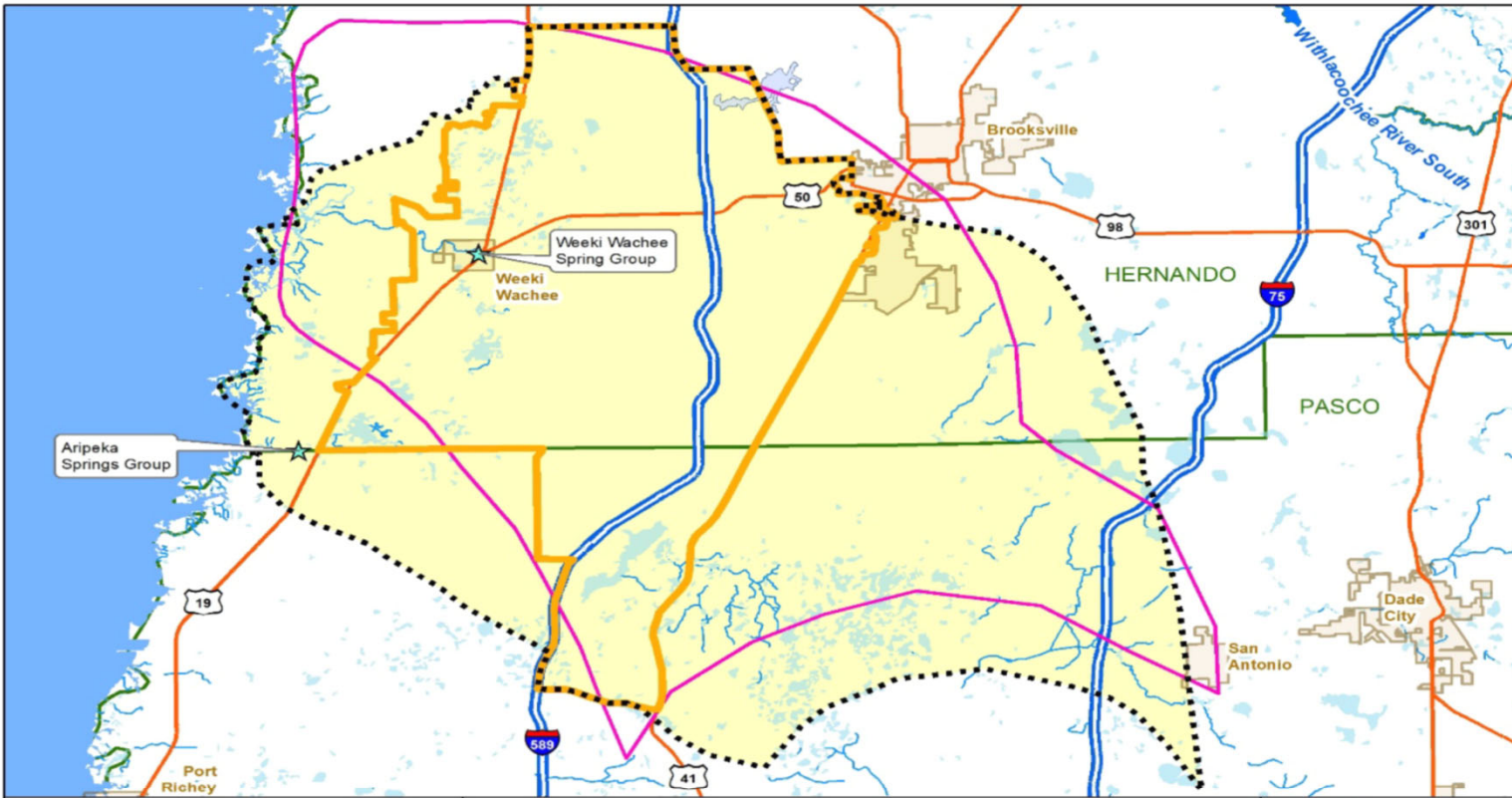
# HERNANDO COUNTY WATER QUALITY INITIATIVES



UTILITIES DEPARTMENT

Weeki Wachee Nitrate Levels (mg/L)





## Weeki Wachee BMAP

Map prepared by Division of Environmental Assessment and Restoration.  
 This map is not for legal decision making purposes.  
 MAP ID: Weeki\_Wachee\_Overview.mxd  
 [BMAP] Terry.Hansen@dep.state.fl.us (850) 245-8561  
 [GIS] Andrew.Morris@dep.state.fl.us  
 Created: 01-22-18

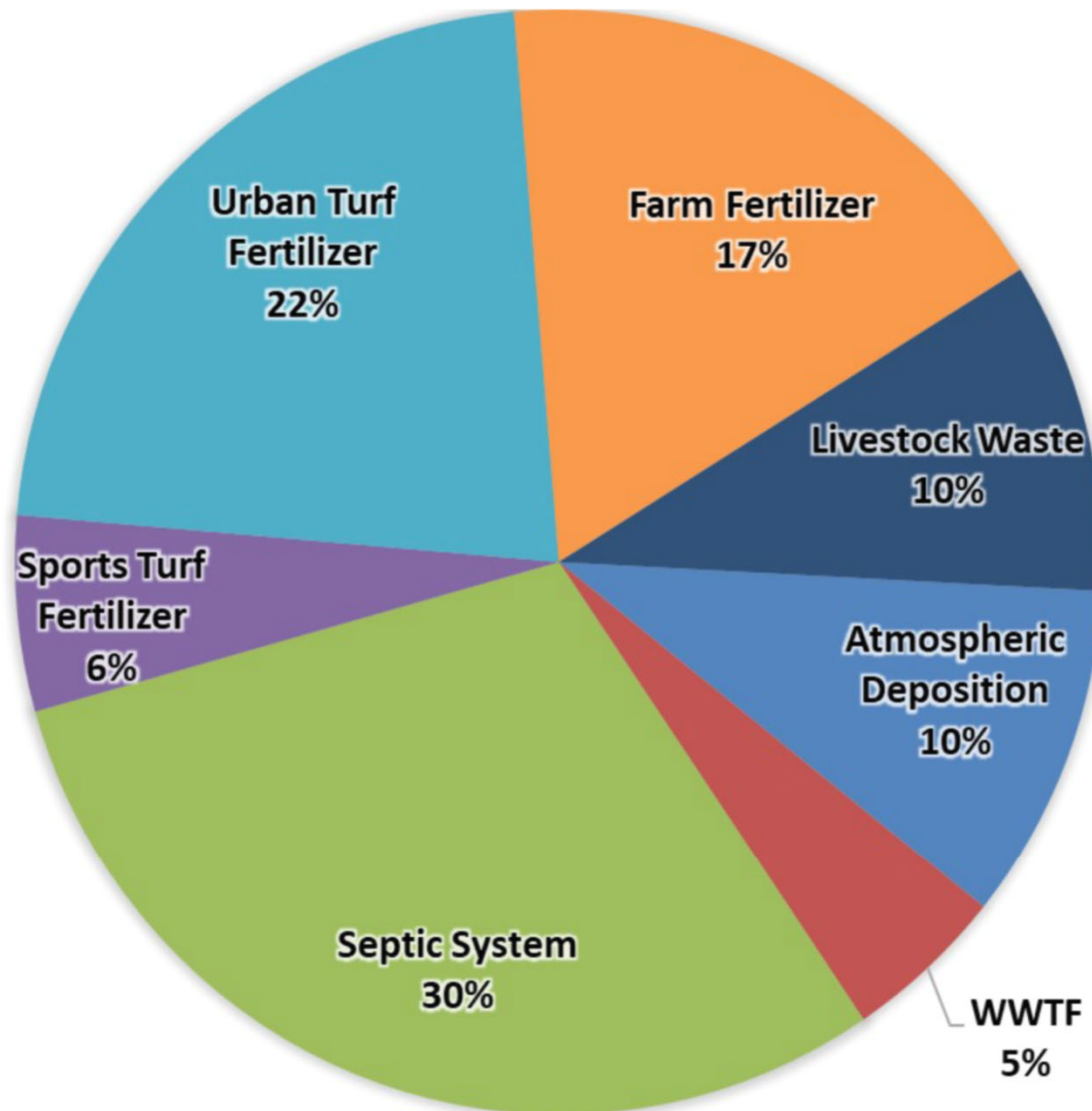


0 1.75 3.5 7 Miles



- |   |                  |   |                         |
|---|------------------|---|-------------------------|
|  | Springs          |  | PFA                     |
|  | Springsheds      |  | Cities                  |
|  | Stream River     |  | Interstate              |
|  | Waterbodies      |  | Primary and US Highways |
|  | Florida Counties |  | Weeki Wachee BMAP       |





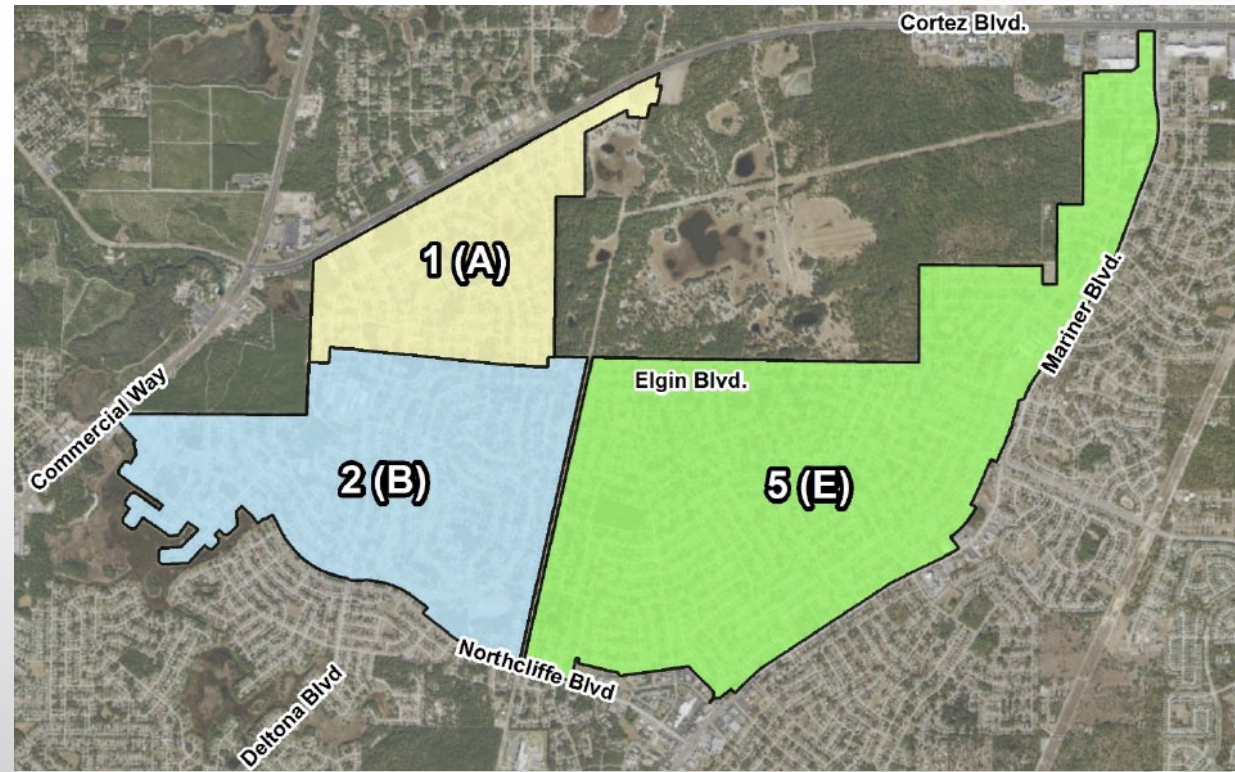
**Table 6. Summary of potential credits for the Weeki Wachee BMAP to meet the TMDLs**

Note: No reductions are estimated for atmospheric deposition sources

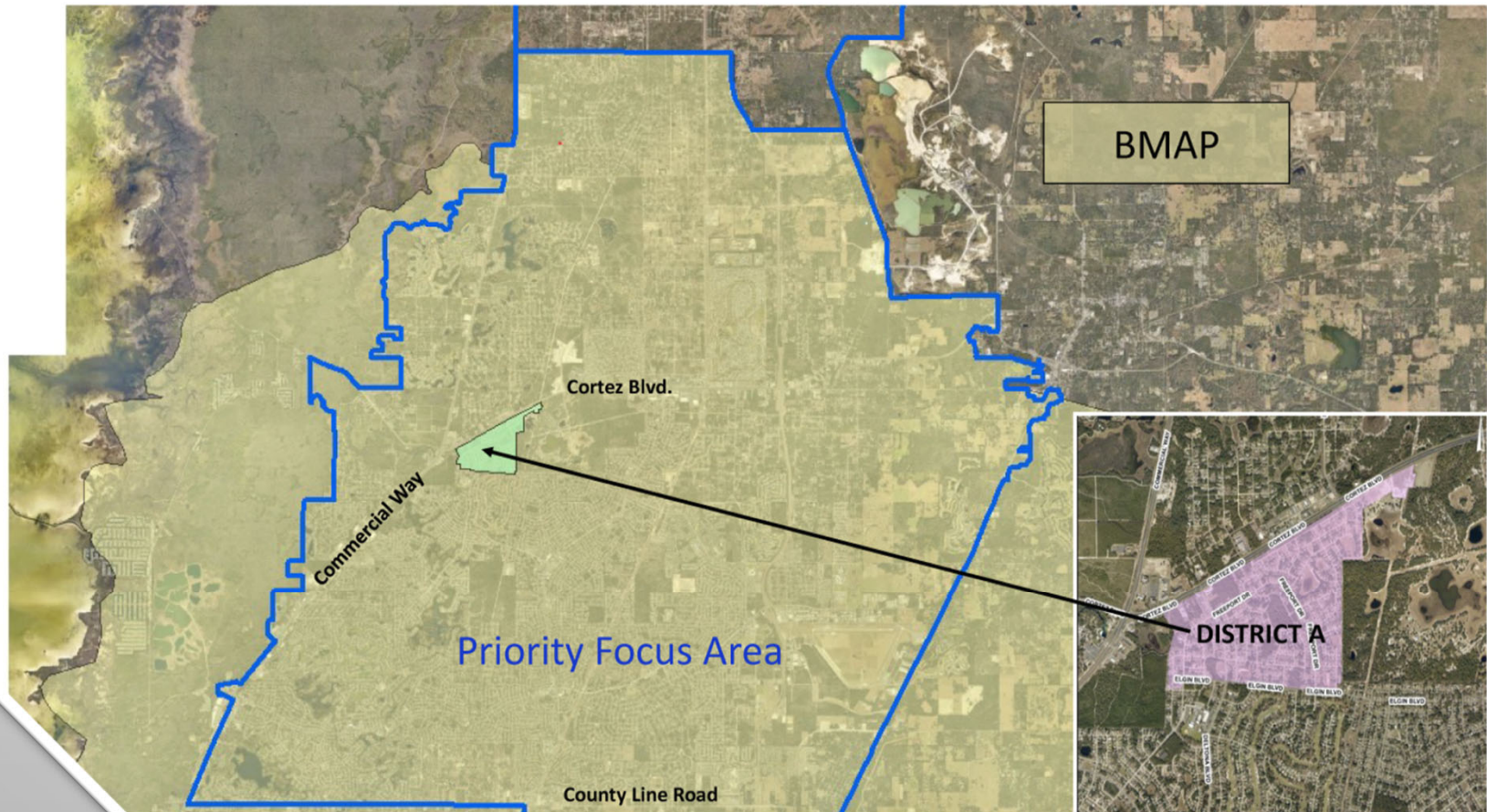
Nitrogen Source	Credits to Load to Groundwater (lb-N/yr)	Description
OSTDS	195,668 - 285,977	Credits are based on lots of all sizes inside the PFA being remediated by either enhancing onsite system or connecting to sewer. An estimated 27,538 lb-N/yr have been provided as OSTDS remediation projects which may be on these lots or in the larger BMAP area. Any projects outside the PFA would add additional reductions to the estimates listed.
UTF	12,590	DEP approved credits (6%) for public education activities as well as credits identified for stakeholder stormwater projects.
STF	5,342	6% BMP credit for sports fields and 10% BMP credit for golf courses on STF load to groundwater, assuming 100% BMP implementation on golf courses and sports fields.
FF	24,590	15% BMP credit on FF load to groundwater, assuming 100% owner-implemented BMPs on all fertilized lands.
LW	9,135	10% BMP credit on LW load to groundwater, assuming 100% owner-implemented BMPs at all livestock facilities.
WWTF	33,058	Achieved by BMAP WWTF policy if BMAP-wide (achieving 3 or 6 mg/L).
WWTF - Decommission	46,171	Hernando County Spring Hill WRF Decommissioning Project (Project HC-20).
WWTF – Biological Application	53,272	Pasco County Crews Lake Restoration Project (Project PC-02).
Total Credits from BMAP Policies and Submitted Projects	379,826 - 470,134	
Advanced Ag BMPs	5,032 – 27,954	Pursue additional practices over next 20 years.
<b>Total Credits</b>	<b>384,857 - 498,088</b>	<b>Estimated load reduction to meet TMDL is 195,200 lb-N/yr.</b>

# COUNTY RESEARCH AND PLANNING

- 2016 Septic to Sewer Conversion Study
- 2020 Feasibility Analysis (funded by FDEP)



# WEEKI WACHEE SPRINGS BMAP & PRIORITY FOCUS AREA



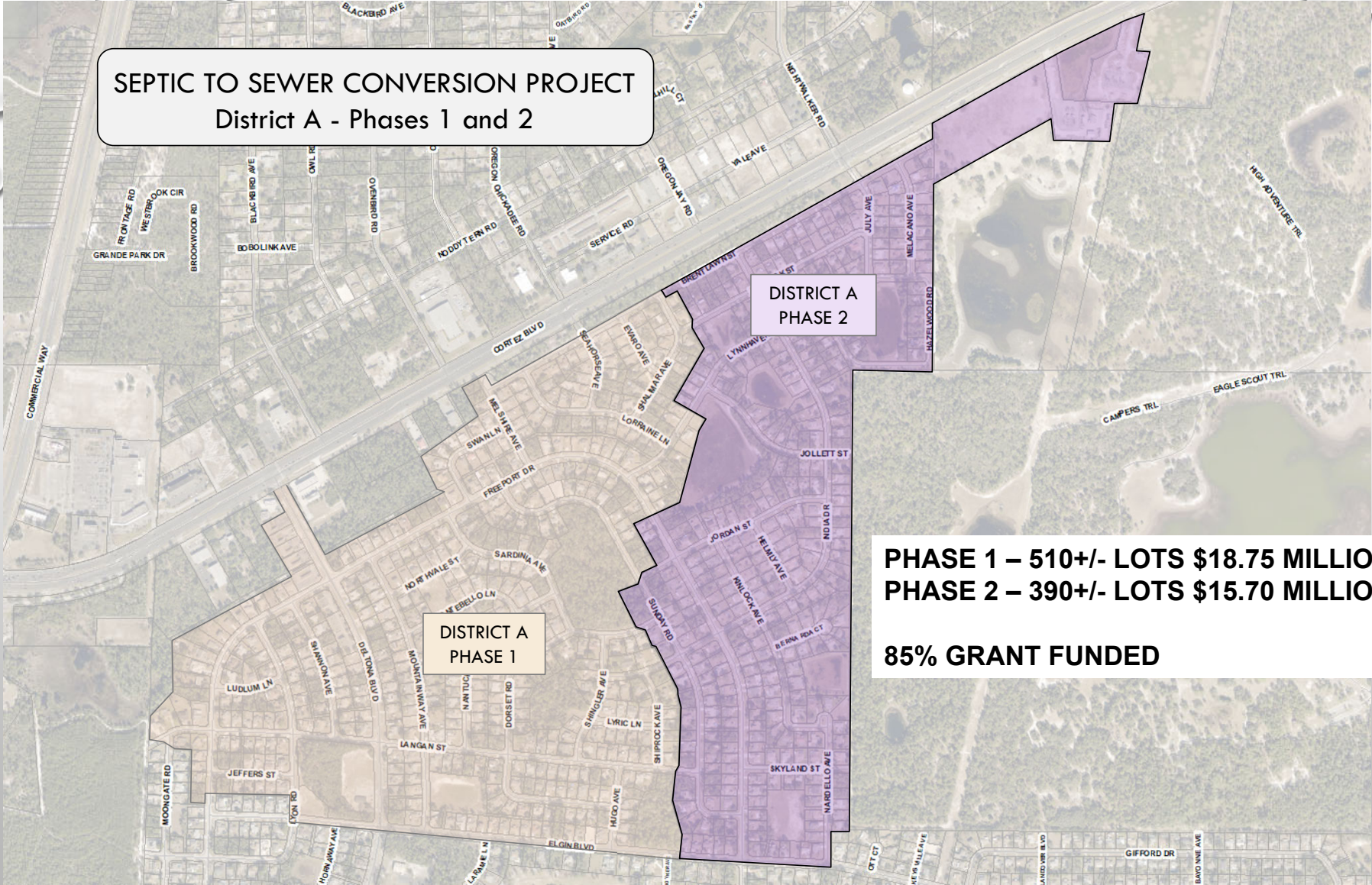
**SEPTIC TO SEWER CONVERSION PROJECT**  
**District A - Phases 1 and 2**

**DISTRICT A  
PHASE 2**

**DISTRICT A  
PHASE 1**

**PHASE 1 – 510+/- LOTS \$18.75 MILLION**  
**PHASE 2 – 390+/- LOTS \$15.70 MILLION**

**85% GRANT FUNDED**





# Initial Open House Feb. 4<sup>th</sup>, 2020 Sand Hill Scout Reservation

# 2<sup>nd</sup> Open House Aug. 10<sup>th</sup>, 2022 HCUD Admin. Building

Hernando County Utilities Department  
15365 Cortez Boulevard  
Brooksville, FL 34613

**YOU ARE INVITED:  
Public Input  
Open House  
February 4, 2020**

Septic System  
Remediation Plans  
to Help  
Protect  
Our Springs

**When:** Tuesday, February 4, 2020  
**Time:** ANY TIME between 4pm and 7pm  
**Where:** Sandhill Scout Reservation  
11210 Cortez Blvd., Brooksville

Focus Area for Remediation

In July of 2016 the Governor signed into law the Florida Springs and Aquifer Protection Act to protect 33 Florida springs threatened by excessive nitrate pollution. As a result, Hernando County has been tasked to find ways to comply with the requirements associated with the 2016 legislation. The State mandated Onsite Sewage Treatment & Disposal System (OSTDS) Remediation Plan requirement for Weeki Wachee Springs is the driving force for Septic to Sewer Conversion plans. Information to be presented:

- How the Florida Springs and Aquifer Protection Act affects Hernando County and you
- What has been done so far
- What this means for residents of Hernando County
- Future plans for Hernando County and its residents

We look forward to your input and feedback regarding the information provided at this important Open House event.

We feel it's important for our residents to be well-informed of potential upcoming changes.  
Please visit: [www.hernandocounty.us/S2S](http://www.hernandocounty.us/S2S) prior to the meeting  
for helpful background information pertaining to the state mandates and how our County can move forward.  
We look forward to meeting with you, Hernando County Utilities Department and JonesEdmunds Staff

Hernando County Utilities Department  
15365 Cortez Boulevard  
Brooksville, FL 34613

**Hernando County's  
Septic to Sewer Conversion Project  
Update!**

Help Protect Our Springs

In order to comply with the state mandated Basin Management Action Plan for Weeki Wachee Springs, Hernando County has been working on converting existing septic systems to centralized sewer. On February 4, 2020, the County hosted an open house to provide information about the plans for converting septic systems to centralized sewer for a portion of the area shown below (District A). At that time, the project was contingent on receiving state funding to assist with the infrastructure costs. The County was recently notified that the project will receive state grant funding for a portion of District A. Local government and state grant funds will be used to pay for approximately 90% of the project costs. It is estimated that the remaining 10% of the costs will come from property assessments which can be paid over a period of 10 years.

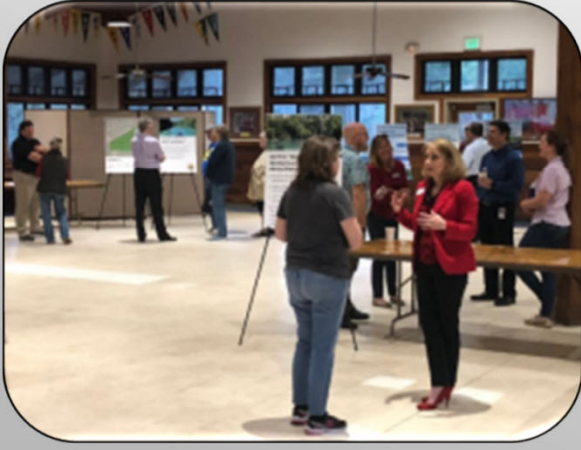
The Hernando County Utilities Department (HCUD) will host an Open House on **Wednesday, August 10, 2022, from 2:00 to 6:30 p.m.** County staff will be available between these hours to provide additional information and answer questions about the project. The Open House will be held on the first floor of the HCUD administration building, located at 15365 Cortez Blvd., Brooksville, Florida 34613.

The Hernando Board of County Commissioners will consider the state funding agreements and the creation of a Municipal Services Benefit Unit (MSBU) at the regular Board Meeting scheduled for **Tuesday, August 23, 2022, beginning at 9:00 a.m.** in the Commission Chambers, Room 160 20 North Main Street, Brooksville, Florida 34601.

In accordance with the Americans With Disabilities Act, persons with disabilities needing a special accommodation to participate in these proceedings should contact Colleen Conks, Hernando County Administration, 15470 Flight Path Drive, Brooksville, Florida 34664, (352)754-4002. If hearing impaired, please call 1-800-676-3777.

We feel it's important for our residents to be well informed regarding the progress of this project. The FAQ section on our website has been updated. Please go here to find more information: [www.hernandocounty.us/S2S](http://www.hernandocounty.us/S2S)

# PUBLIC OUTREACH



HERNANDO COUNTY, FL

SERVICES • DEPARTMENTS • OUR COUNTY • I WANT TO... Search...

Utilities

Solid Waste and Recycling  
Water & Sewer  
Conservation  
Property Debt Search Request  
High Bill Inquiries  
Customer Service Forms  
Residential Service Application  
Termination of Service  
Invoice Cloud  
Utilities FAQ

Septic to Sewer Conversion Overview

Water/Sewer Maps for an Area

CONTACT

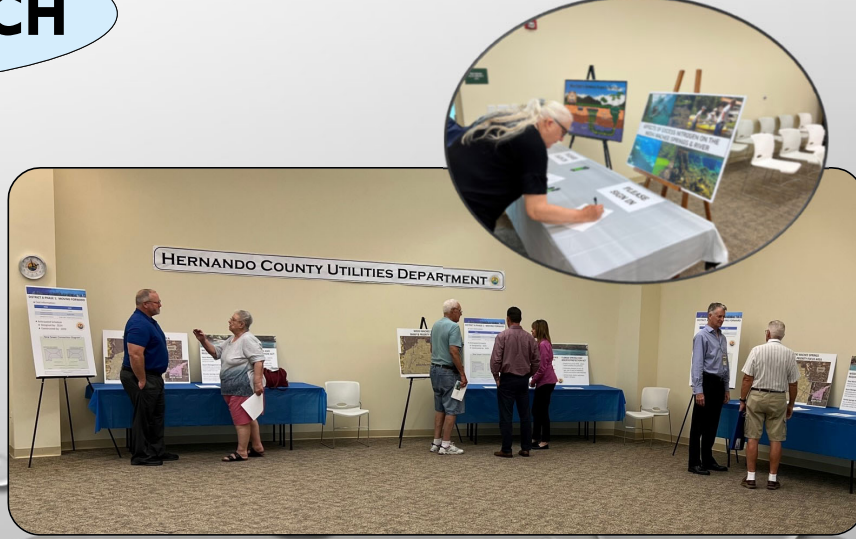
**STAY INFORMED!**  
Remediation Project Updates

Septic to Sewer Conversion Overview

In July of 2016, the Governor signed into law the Florida Springs and Aquifer Protection Act to protect 33 Florida springs threatened by excessive nitrate pollution. As a result, Hernando County has been tasked to find ways to comply with the requirements associated with the 2016 legislation.

The state mandated Onsite Sewage Treatment & Disposal System Remediation Plan requirement for Weeki Wachee Springs is the driving force for the Septic to Sewer Conversion plan.

Hernando County conducted a Septic to Sewer Conversion Study in 2016 to determine which septic systems impact Weeki Wachee Springs. The study also prioritized the areas based on level of impact. The first focus area (District A) chosen is immediately adjacent to the springs and has the most immediate impact on it.





## DISTRICT A - PHASE 1

- Cost Information:

ITEM	COST
Estimated Cost per lot	\$36,000
Anticipated Grant Offsets and County Contribution	\$32,400 (90%)
Estimated Cost to Resident	\$3,600 (10%) *Includes \$3,544 connection fee*


- Anticipated Schedule

- Designed by: 2024
- Constructed by: 2026





# Septic Upgrade Incentive Program

- Up to \$7,500 Reimbursement to Upgrade Existing Septic Systems to Enhanced Systems for Homes within the Priority Focus Area
  - Approximately \$3.9 Million in Grant Funding
  - Program Opened on February 22, 2023
  - Currently 244 Applications Received
- 

# WATER RECLAMATION FACILITY (WRF) IMPROVEMENTS



- Spring Hill WRF Decommissioning
- 46,000lbs Reduction of Nitrogen Per Year
- Demolition Expected to Begin Later this Year

# BROOKRIDGE WRF DECOMMISSIONING



- Recently Demolished
- New Subregional Pump Station to Divert Flows to The Glen WRF

# AIRPORT WRF EXPANSION AND DENITRIFICATION UPGRADES

- \$28 Million project from 3.5 MGD to 6 MGD
- Conversion to Advanced Wastewater Treatment for TN (3mg/l)
- Received approximately \$13 million in grant funding
- 48,000LBS of Nitrogen Removal per Year





## THE GLEN WRF DENITRIFICATION UPGRADES

- \$13 Million Project
- Conversion to Advanced Wastewater Treatment for TN
- Received Approximately \$4.6 Million in Grant Funding
- 55,000LBS Nitrogen Removal per Year

## RECLAIMED WATER PROJECT




- \$9 Million Project
- Approximately \$6 Million in Grant Funding
- Deliver 1.7 MGD of Reclaimed Water to Timber Pines Community





# Package Plants Decommissioning

- Conversion of 4 Existing Package Treatment Plants (Existing RV Parks) to Centralized Sewer
  - Approximately \$3.4 Million in Grant Funding
  - Currently Under Design
- 

The background of the slide is a light gray gradient. It is decorated with several realistic water droplets of various sizes and shapes, scattered across the top and bottom edges. The droplets have highlights and shadows, giving them a three-dimensional appearance.

**QUESTIONS?**