



1460421

Photo date: 2020

This map was prepared by this office to be used as an aid in land parcel location and identification only. All land locations, right-of-way widths, acreages, and utility locations are subject to field survey or other appropriate verification.

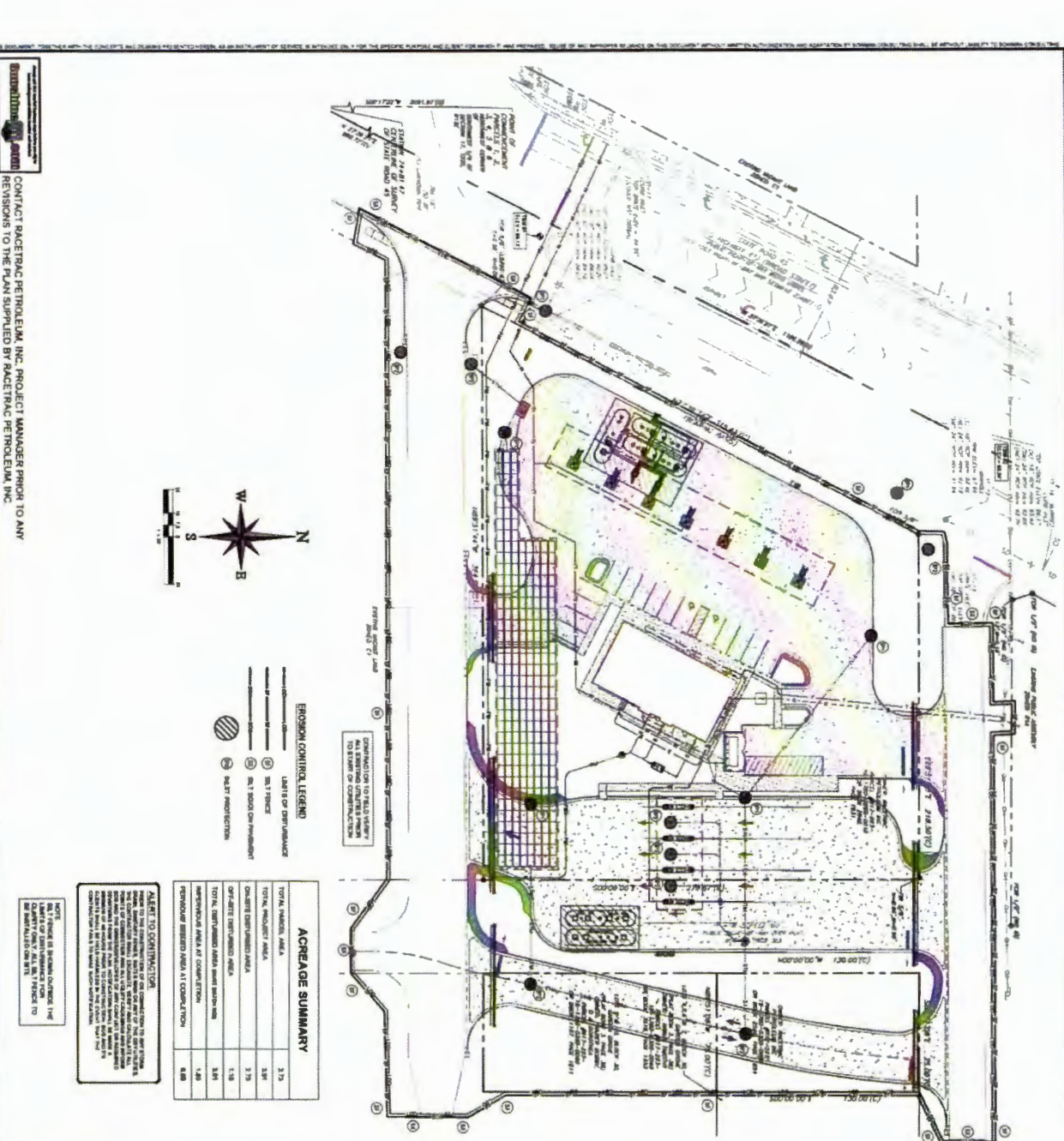


0 0.01 0.01 0.02 0.03 0.04
Miles





CONTACT RACETRAC PETROLEUM, INC. PROJECT MANAGER PRIOR TO ANY REVISIONS TO THE PLAN SUPPLIED BY RACETRAC PETROLEUM, INC.



ACREAGE SUMMARY

TOTAL PROJECT AREA	3.75
TOTAL DISTURBED AREA	3.61
CONCRETE COVERED AREA	3.15
GRAVEL DRIVEWAY AREA	1.18
TOTAL UNDISTURBED AREA	3.81
PERCENTAGE UNDISTURBED AREA AT COMPLETION	101.6

NOTES:

1. ALL EROSION CONTROL MEASURES SHALL BE INSTALLED PRIOR TO THE START OF CONSTRUCTION.
2. EROSION CONTROL MEASURES SHALL BE MAINTAINED THROUGHOUT CONSTRUCTION.
3. EROSION CONTROL MEASURES SHALL BE REMOVED UPON COMPLETION OF CONSTRUCTION.
4. EROSION CONTROL MEASURES SHALL BE REINSTALLED UPON COMPLETION OF CONSTRUCTION.
5. EROSION CONTROL MEASURES SHALL BE MAINTAINED THROUGHOUT CONSTRUCTION.
6. EROSION CONTROL MEASURES SHALL BE REMOVED UPON COMPLETION OF CONSTRUCTION.
7. EROSION CONTROL MEASURES SHALL BE REINSTALLED UPON COMPLETION OF CONSTRUCTION.
8. EROSION CONTROL MEASURES SHALL BE MAINTAINED THROUGHOUT CONSTRUCTION.
9. EROSION CONTROL MEASURES SHALL BE REMOVED UPON COMPLETION OF CONSTRUCTION.
10. EROSION CONTROL MEASURES SHALL BE REINSTALLED UPON COMPLETION OF CONSTRUCTION.

MAINTENANCE

ALL MEASURES INSTALLED ON THE SITE AND THE EROSION CONTROL MEASURES SHALL BE MAINTAINED THROUGHOUT CONSTRUCTION. THE CONTRACTOR SHALL BE RESPONSIBLE FOR THE MAINTENANCE OF ALL EROSION CONTROL MEASURES THROUGHOUT CONSTRUCTION. THE CONTRACTOR SHALL BE RESPONSIBLE FOR THE MAINTENANCE OF ALL EROSION CONTROL MEASURES THROUGHOUT CONSTRUCTION. THE CONTRACTOR SHALL BE RESPONSIBLE FOR THE MAINTENANCE OF ALL EROSION CONTROL MEASURES THROUGHOUT CONSTRUCTION.

SEQUENCE OF CONSTRUCTION

1. THE CONTRACTOR SHALL BE RESPONSIBLE FOR THE SEQUENCE OF CONSTRUCTION. THE CONTRACTOR SHALL BE RESPONSIBLE FOR THE SEQUENCE OF CONSTRUCTION. THE CONTRACTOR SHALL BE RESPONSIBLE FOR THE SEQUENCE OF CONSTRUCTION.

BEST MANAGEMENT PRACTICES

1. THE CONTRACTOR SHALL BE RESPONSIBLE FOR THE SEQUENCE OF CONSTRUCTION. THE CONTRACTOR SHALL BE RESPONSIBLE FOR THE SEQUENCE OF CONSTRUCTION. THE CONTRACTOR SHALL BE RESPONSIBLE FOR THE SEQUENCE OF CONSTRUCTION.

EROSION CONTROL PLAN PHASE II

RACETRAC SPRINGHILL

RaceTrac

NEC OF US HWY 41 & HIGHWAY BLVD
BROOKSVILLE, FL 34609

Bowman

THESE PLANS ARE SUBJECT TO FEDERAL, STATE AND LOCAL REGULATIONS AND ANY USE OF SAME WITHOUT WRITTEN PERMISSION OF BOWMAN ENGINEERING, INC. IS PROHIBITED.

C3.1

DATE: _____