



PROCUREMENT DEPARTMENT

15470 FLIGHT PATH DRIVE ♦ BROOKSVILLE, FLORIDA 34604
P 352.754.4020 ♦ F 352.754.4199 ♦ W www.HernandoCounty.us

AMENDMENT NO. ONE (1)

TO

CONTRACT NO. 23-ITB00307/TC

FOR

Parking Lot Restoration Project

The following changes are hereby made a part of the Contract Documents for the CONTRACT NO. 23-ITB00307/TC – Parking Lot Restoration Project, located in Hernando County, as fully and completely as if the same were fully set forth therein:

The following additions have been made to the above referenced Contract as part of the Construction Agreement.

- 1. Article 1 – Contract Documents, under Scope and Specification, 11.2, is amended to include the addition of Lykes Library Parking Lot, 238 Howell Ave., Brooksville, FL 34601 and attachment D.

11.2. LOCATION OF THE WORK/DELIVERY:

The work to be performed or delivered under this contract will be performed at various locations, in

Hernando County, Florida as defined below:

- Attachment A - Sheriff and Emergency Operation Center - 18900 Cortez Blvd. Brooksville, FL 34601
• Attachment C - Westside Government Center- 7405-7525 Forest Oaks Blvd. Spring Hill, FL 34606
• Attachment D – Lykes Library Parking Lot – 238 Howell Ave., Brooksville, FL 34601

- 2. Article 4 – Contract Price, is to be amended to include the below Lump Sum and Unit Priced items, totaling \$79,180.00 (Seventy-Nine Thousand One Hundred Eighty Dollars and No Cents).

Table with 6 columns: ITEM, QTY., DESCRIPTION, UNIT, UNIT PRICE, AMOUNT. Row 1: 1, 1, Permitting and Mobilization, Lump Sum, \$8,300.00, \$8,300.00. Row 2: 2, 1, Maintenance of Traffic, Lump Sum, \$6,375.00, \$6,375.00.

3	1	(Clearing and Grubbing) Saw Cutting, concrete removal, wheel stops, milling, asphalt removal, dispose of old asphalt and clearing and removal of dirt and vegetation	Lump Sum	\$22,550.00	\$22,550.00
4	25	(Potholes) Repair and re-grade back to exiting lime rock base layer elevation	Per/ Sq. Ft.	\$60.00	\$1,500.00
5	78	1-1/2" SP 12.5 or 9.5 Asphalt w/ Bitums Tack Coat 0.07 Gallon / SY	Per Ton	\$330.00	\$25,740.00
6	1	Layout and Stripping parking lot	Lump Sum	\$4,970.00	\$4,970.00
7	23	Labor and material to install new wheel stops	Each	\$115.00	\$2,645.00
8	2	ADA Mats	Each	\$850.00	\$1,700.00
9	1	Mill and pave 42' x 18' x 1-1/2" staff parking area to include asphalt ramp at door	Lump Sum	\$5,400.00	\$5,400.00
TOTAL					\$79,180.00

3. All other terms and conditions shall remain the same.

Superior Asphalt, Inc.

BOARD OF COUNTY COMMISSIONERS
HERNANDO COUNTY

Dylan
Teasdale

Digitally signed by Dylan
Teasdale
Date: 2024.08.07 18:21:36
-04'00'

Authorized Signature

Print Name Dylan Teasdale

Elizabeth Narverud
Chair, Hernando County Board of
County Commissioners

APPROVED AS TO FORM AND
LEGAL SUFFICIENCY:

By: Melissa Tartaglia
County Attorney's Office



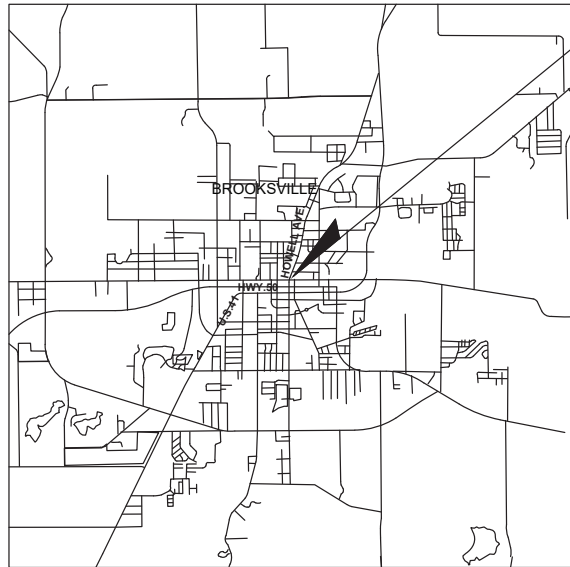
HERNANDO COUNTY FLORIDA BOARD OF COUNTY COMMISSIONERS

LYKES LIBRARY PARKING LOT RESTORATION

COUNTY COMMISSIONERS

- DISTRICT 1 - ELIZABETH NARVERUD
- DISTRICT 2 - BRAIN HAWKINS
- DISTRICT 3 - JOHN ALLOCCO
- DISTRICT 4 - JERRY CAMPBELL
- DISTRICT 5 - STEVE CHAMPION

COUNTY ADMINISTRATOR - JEFF RODGERS



PROJECT LOCATION MAP - N.T.S.

SECTION 22, TOWNSHIP 22 RANGE 19
HERNANDO COUNTY, FLORIDA

DRAWING INDEX

SHEET NUMBER DRAWING DESCRIPTION

- C-0 COVER
- C-1 EXISTING PARKING LOT
- C-2 PARKING LOT NOTES
- C-3 PARKING LOT DETAIL
- C-4 ASPHALT & CURB DETAILS
- C-5 ADA PARKING LOT DETAILS

DESIGN AND CONSTRUCTION REFERENCE

GOVERNING STANDARDS AND SPECIFICATIONS:

- MANUAL OF UNIFORM MINIMUM STANDARDS FOR DESIGN, CONSTRUCTION & MAINTENANCE OF STREETS & HIGHWAYS, 2016 (FDOT GREENBOOK).
- FDOT FY 2022-2023 STANDARD PLANS FOR ROAD & BRIDGE CONSTRUCTION.
- FDOT FLORIDA DESIGN MANUAL, LATEST EDITION.
- JANUARY 2022 STANDARD SPECIFICATIONS FOR ROAD & BRIDGE CONSTRUCTION, DIVISION II & III (as applicable)
- HERNANDO COUNTY FACILITY DESIGN GUIDELINES
- FDOT FLEXIBLE PAVEMENT DESIGN MANUEL - FPDM (2022)
- FDOT DRAINAGE MANUEL
- SWFWMD REGULATIONS (Rule 40D-40)
- AASHTO POLICY ON GEOMETRIC DESIGN (AASHTO Greenbook)
- FHWA MANUEL ON UNIFORM TRAFFIC CONTROL DEVICES (MUTCD)

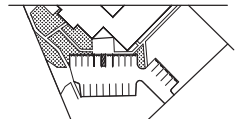
HERNANDO COUNTY
B.O.C.C
FACILITIES DIVISION
1525 EAST JEFFERSON ST.
BROOKSVILLE FL. 34601

PROJECT LOCATION:
LYKES LIBRARY
PARKING LOT
RESTORATION

238 Howel Ave.
Brooksville, FL. 34601

REVISIONS:

No.	Description	Date:



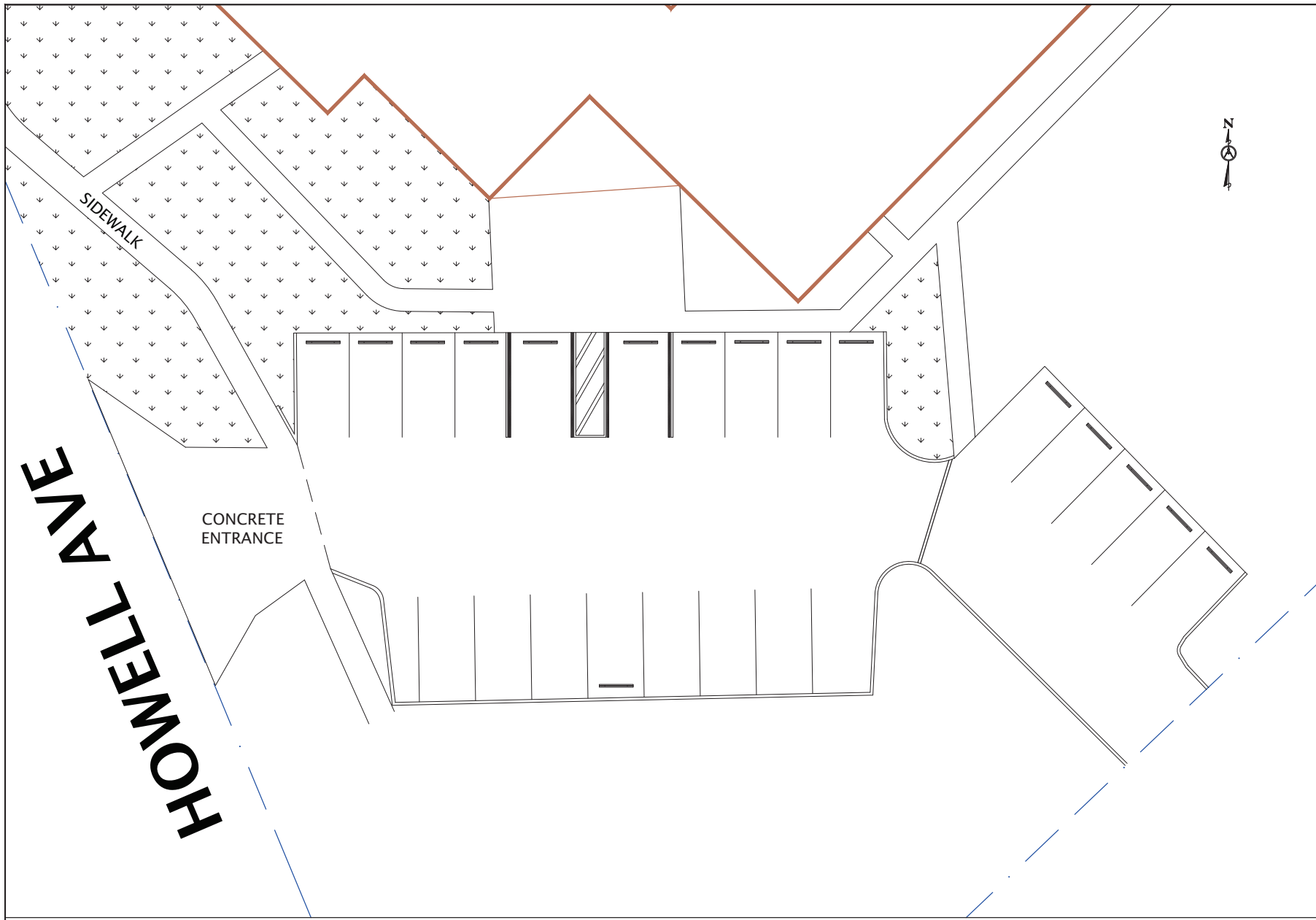
DRAWING TITLE:

Cover

DRAWING NUMBER:

C-0

DRAWN BY: SDB
SCALE: NTS

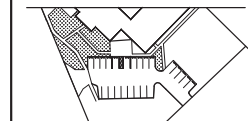


HERNANDO COUNTY
B.O.C.C
FACILITIES DIVISION
1525 EAST JEFFERSON ST.
BROOKSVILLE FL. 34601

PROJECT LOCATION:
**LYKES LIBRARY
PARKING LOT
RESTORATION**
238 Howel Ave.
Brooksville, FL. 34601

REVISIONS:

No:	Description	Date:



DRAWING TITLE:
**Existing Parking
Lot Layout**

DRAWING NUMBER:
C-1

DRAWN BY: SDB
SCALE: NTS

GENERAL NOTES:

1. ALL WORK PERFORMED SHALL COMPLY WITH THE REGULATIONS AND ORDINANCES OF THE VARIOUS GOVERNMENTAL AGENCIES HAVING JURISDICTION OVER THE WORK
2. DO NOT PROCEED WITH WORK IF UNFORESEEN CONDITIONS ARE DISCOVERED, REPORT DISCOVERY TO COUNTY PROJECT MANAGER IMMEDIATELY
3. IT IS THE RESPONSIBILITY OF THE CONTRACTOR TO USE WHATEVER MEANS NECESSARY TO CONTROL AND PREVENT EROSION AND TRANSPORT OF SEDIMENT TO SURFACE DRAINS DURING WORK
4. CONTRACTOR SHALL PRE-COORDINATE ALL PARKING LOT CLOSER AND SITE ACCESS LOGISTICS WITH COUNTY PROJECT MANAGER PRIOR TO AND THROUGHOUT COMPLETION OF THE WORK. THE CONTRACTOR IS RESPONSIBLE FOR ALL ASSOCIATED MAINTENANCE OF TRAFFIC (MOT) AND EQUIPMENT AS REQUIRED FOR COMPLETION OF THE WORK
5. CONTRACTOR SHALL USE APPROPRIATE ADA TRAFFIC CONTROL BARRICADES, CONES OR OTHER DEVICES TO DIRECT VEHICLES AND PEDESTRIANS AROUND WORK AREA
6. FOR MAINTENANCE OF TRAFFIC CONTRACTOR TO USE FDOT SECTION 102
7. CONTRACTOR IS RESPONSIBLE FOR MEASURING ALL AREAS
8. PARKING LOT PROJECT TO INCLUDE BUT NOT LIMITED TO ASPHALT OVERLAY, SEALCOATING, STRIPING, AND REPAIRS. CONTRACTOR SHALL FOLLOW THE HERNANDO COUNTY DESIGN GUIDELINES AND FDOT STANDARDS SPECIFICATION FOR ROAD AND BRIDGE 2022 MANUEL OF UNIFORM MINIMUM STANDARDS FOR DESIGN, CONSTRUCTION & MATERIALS OF STREET & HIGHWAYS, 2022 (FDOT GREENBOOK)
9. ALL DISTURBED AREAS, INCLUDING AREAS OUTSIDE THE CONSTRUCTION LIMITS, SHALL BE RETURNED TO THEIR PRE-CONSTRUCTION CONDITIONS UPON COMPLETION OF THE PROJECT AT CONTRACTORS EXPENSE
10. THE CONTRACTOR SHALL HAUL ALL EXCESS MATERIAL OFF THE PROJECT SITE. IT WILL BE THE CONTRACTORS RESPONSIBILITY TO DISPOSE OF ALL EXCESS MATERIAL AFTER DETERMINED THAT IT IS NO LONGER NEEDED ON PROJECT SITE.
11. ALL ITEMS SHALL BE REMOVED UPON COMPLETION OF THE PROJECT, INCLUDING SILT, SEDIMENT, TRASH, OR CONSTRUCTION DEBRIS
12. THE CONTRACTOR IS RESPONSIBLE FOR ANY UTILITY LOCATES NEEDED FOR OR DURING PROJECT
13. THE CONTRACTOR IS RESPONSIBLE FOR ANY DAMAGE TO UTILITIES, STRUCTURES AND PROPERTY ON OR ADJACENT TO THE SITE
14. ALL WORK ON PROJECT MUST BE DONE AFTER HOURS (6PM-6AM) & ON WEEKEND (SATURDAY, SUNDAY) UNLESS OTHERWISE NOTED
15. ALL DETAILS, SECTIONS, AND NOTES SHOWN ON DRAWING ARE INTENDED TO BE TYPICAL AND SHALL APPLY TO SIMILAR SITUATIONS ELSEWHERE UNLESS NOTED OR SHOWN OTHER WISE
16. EXISTING PARKING LOT PITCH AND OR SLOPE SHALL REMAIN AS IS FOR PROPER WATER DRAINAGE
17. NPDES PERMIT IS REQUIRED

ASPHALT NOTES:

1. REMOVE ALL WHEEL STOPS STORE ON SITE, PRESSURE WASH WHEEL STOPS BEFORE RE-INSTALLING, REPLACE BROKEN WHEEL STOPS, RE-PAINT HANDICAP WHEEL STOPS
2. POTHoles REPAIR SHALL BE SQUARE CUT, REMOVE EXISTING ASPHALT, BRING LIMEROCK BASE LAYER BACK TO EXISTING BASE LAYER ELEVATION AND COMPACT TO 98% DENSITY
3. ASPHALT SHALL BE REMOVED COMPLETELY IF LESS THAN 1", ASPHALT OVER 1" MILLED DOWN 1"
4. USE A ASPHALT BINDER FROM FDOT'S APPROVED LIST (APL) OR EQUIVALENT BINDER THAT MEET THE FDOT REQUIREMENTS
5. NEW OVERLAY SHALL PERFORM AT A LEVEL (B) USING SP-9.5 STRUCTURAL MIX, REFER TO SECTION 334 OF THE FLORIDA DEPARTMENT OF TRANSPORTATION SPECIFICATIONS
6. NEW OVERLAY LAYER SHALL BE INSTALLED AND COMPACTED TO A FINISK THICKNESS OF 1-1/2" USING GENERAL CONSTRUCTION REQUIREMENTS IN SECTION 330 OF FDOT GUIDELINES
7. DO NOT TRANSPORT ASPHALT MIX FROM THE PLANT TO THE PARKING LOT UNLESS ALL WEATHER CONDITIONS ARE SUITABLE FOR THE PAVING OPERATION
8. CONTRACTOR TO FOLLOW FLORIDA DEPARTMENT OF TRANSPORTATION GUIDE LINES SECTION 327 FOR MILLING OF ASPHALT
9. THE CONTRACTOR IS RESPONSIBLE TO PROVIDE ASPHALT TICKET DAILY DURING PROJECT. ANY INVOICE/HAUL TICKET FOR MATERIAL SHALL BE MADE AVAILABLE TO COUNTY UPON REQUEST

SEALCOAT NOTES:

1. SEALCOAT SHALL BE TARCONITE REFINED TAR EMULSION SEALER OR EQUIVALENT
2. EQUIPMENT USED FOR APPLICATION OF SEALCOAT SHALL CONFORM TO THE MANUFACTURE'S INSTALLATION REQUIREMENTS
3. BEFORE APPLYING ANY SEALER MATERIAL, REMOVE ALL LOOSE MATERIAL, DUST, CAKED ON SOIL, VEGETATION, AND ANY OTHER FOREIGN MATERIAL WHICH MIGHT PREVENT PROPER BOND WITH EXISTING SURFACE FOR THE FULL WIDTH OF THE APPLICATION. TREAT ALL GREASE, OIL, GASOLINE AND SIMILAR PETROLEUM STAINS OR SPOTS WITH (NEYRA PETEOBOND OIL SPOT REMOVER) OR EQUIVALENT TAKE PARTICULAR CARE IN CLEANING THE OUTER EDGES OF THE STRIP TO BE TREATED, TO ENSURE THAT THE SEALCOAT WILL ADHERE. ALL PREPARATIONS SHALL CONFORM TO MANUFACTURE'S PREPARATION REQUIREMENTS
4. POTHoles SHALL BE SQUARE CUT DOWN TO LIMEROCK BASE, TACKED AND FILLED WITH HOT MIX ASPHALT OR HIGH PERFORMANCE POTHOLE PATCH (NEYRA OR EQUIVALENT)
5. USE A WATERPROOF CRACK FILL PUTTY IN ALL CRACKS LARGER THAN 1/16" OF AN INCH. FILL VOIDS AND WIPE OF EXCESSIVE PUTTY RESIDUE PRIOR TO SEALCOATING
6. WHEN APPLYING THE SEALCOAT ADJACENT TO CURB AND GUTTER, VALLEY GUTTER, OR ANY OTHER CONCRETE SURFACE, COVER SUCH CONCRETE SURFACES WITH HEAVY PAPER OR OTHER MATERIAL THAT WILL PERFORM EQUALLY TO OR BETTER, WHILE APPLYING THE SEALCOAT. REMOVE ANY SEALER MATERIAL DEPOSITED ON CONCRETE SURFACES
7. INSTALL TWO (2) COATS OF SEALER AT A RATE OF .08 GALLON PER SQUARE YARD. FIRST COAT MUST BE DRIED COMPLETELY BEFORE APPLYING SECOND COAT. APPLICATION TO BE DONE BY MECHANICAL SPRAY, SQUEEGEE, OR SQUEEGEE APPLICATION EQUIPMENT DESIGNED SPECIFICALLY FOR SUCH PURPOSE
8. TEMPERATURE MUST BE A MINIMUM FIFTY (50) DEGREES FAHRENHEIT AND RAISE FOR A PERIOD OF NOT LESS THAN 24 HOURS. DO NOT APPLY WHEN TEMPERATURE IS EXPECTED TO DROP BELOW FIFTY (50) DEGREES FAHRENHEIT IN A 24 HOUR PERIOD. DO NOT APPLY IF RAIN IS FORECAST WITHIN EIGHT (8) HOURS
9. KEEP THE SEALCOAT SURFACE FREE FROM TRAFFIC UNTIL IT HAS COMPLETELY CURED AND ITS SURFACE IS NO LONGER ADHESIVE

TRAFFIC MARKING NOTES:

1. TRAFFIC PAINT, BEADS, AND THERMOPLASTIC MATERIALS SHALL BE PER THE FDOT STANDARD SPECIFICATIONS. SECTION 710 AND 711, LATEST EDITION. PARKING AREAS WILL RECEIVE APPROVED WATER BASE PAINTS WITHOUT BEADS UNLESS OTHERWISE NOTED
2. TRAFFIC MARKING SHALL BE DONE AFTER 14 DAY CURING TIME IS COMPLETED PER MANUFACTURE FOR ASPHALT, CONCRETE, OR PAVEMENT SEALER
3. ALL AREAS TO RECEIVE TRAFFIC MARKING SHALL BE CLEAN AND DRY WITH TEMPERATURES WITHIN THE MANUFACTURE'S SPECIFICATIONS. ENSURE ANY LOOSE MATERIAL ON EXISTING TRAFFIC MARKING ARE REMOVED TO PROVIDE PROPER BONDING
4. TRAFFIC MARKING AND SIGNS SHALL BE APPLIED PER THE HERNANDO COUNTY FACILITY DESIGN GUIDELINES, OR THE FDOT DESIGN STANDARDS LATEST EDITION
5. TRAFFIC MARKINGS SHALL BE LAID OUT USING TACK POINTS AND STRING LINING, PRIOR TO APPLICATION
6. HANDICAP PARKING SPACES MEET OR EXCEED MINIMUM REQUIREMENTS PER TABLE 208.2 OF THE FLORIDA ACCESSIBILITY CODE
7. TRAFFIC MARKINGS SHALL BE PROTECTED UNTIL DRY / CURED PER MANUFACTURE'S SPECIFICATION

CURB NOTES:

1. ALL CURBS SHALL BE CONSTRUCTED OF CONCRETE WITH FIBERMESH THAT WILL OBTAIN A MINIMUM COMPRESSION STRENGTH OF 3,000 PSI AT 28 DAYS, UNLESS OTHERWISE NOTED
2. ALL CONCRETE CURBS SHALL BE SPACED WITH FULL-DEPTH, 1/2" WIDTH ISOLATION JOINT MATERIAL PRIOR TO PLACEMENT OF ADJACENT CONCRETE PAVEMENT
3. THERE SHALL BE 1/8"-1/4" CONTROL JOINT AT 10' CENTERS MAXIMUM, EITHER TOOLED OR SAW-CUT WITH-IN 12 HOURS OF PLACEMENT, UNLESS OTHERWISE NOTED.
4. ALL CURB ENDS THAT DO NOT TIE INTO OTHER FACILITIES SHALL TRANSITION DOWN TO PAVEMENT

SIGN NOTES:

1. ALL EXISTING SIGNS ARE TO REMAIN IN PLACE UNLESS OTHERWISE NOTED ON PLANS

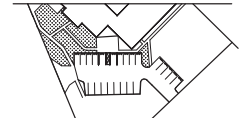
**HERNANDO COUNTY
B.O.C.C
FACILITIES DIVISION**
1525 EAST JEFFERSON ST.
BROOKSVILLE FL. 34601

PROJECT LOCATION:
**LYKES LIBRARY
PARKING LOT
RESTORATION**

238 Howel Ave.
Brooksville, FL. 34601

REVISIONS:

No:	Description	Date:



DRAWING TITLE:
**Parking Lot
Notes**

DRAWING NUMBER:
C-2

DRAWN BY: SDB
SCALE: NTS

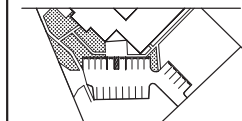
PROJECT LOCATION:

**LYKES LIBRARY
PARKING LOT
RESTORATION**

238 Howel Ave.
Brooksville, FL. 34601

REVISIONS:

No:	Description	Date:



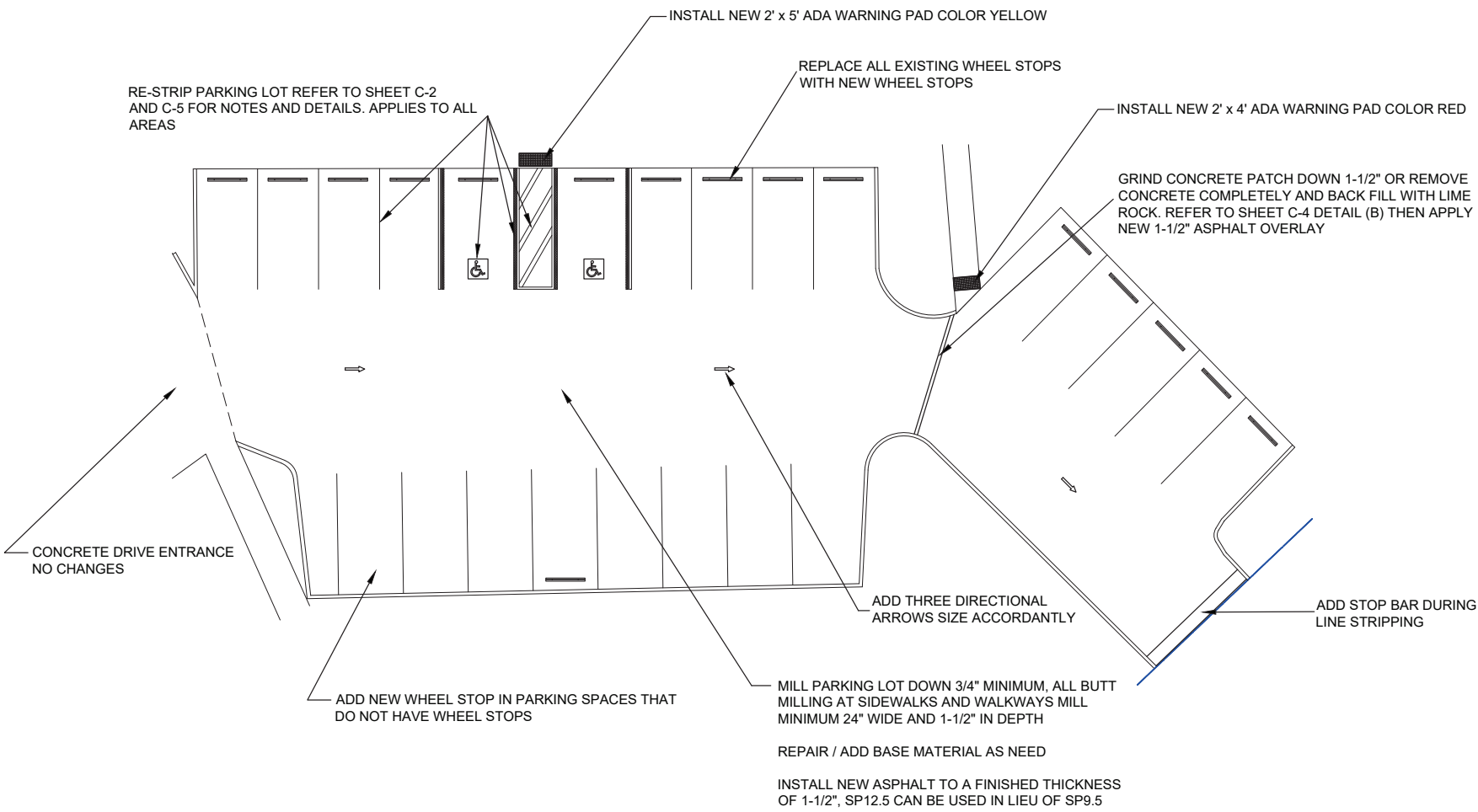
DRAWING TITLE:

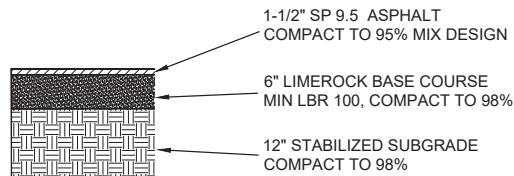
**Parking Lot
Detail**

DRAWING NUMBER:

C-3

DRAWN BY: SDB
SCALE: 1/16" = 1'



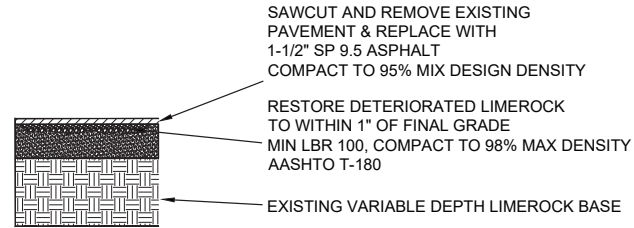


SOIL USED FOR THE STABILIZED SUBGRADE WITH GREATER THAN 15% FINES SHALL BE COMPACTED TO 100% MAXIMUM DENSITY

TYPICAL NEW PARKING LOT PAVEMENT SECTION

N.T.S

A



TYPICAL PARKING LOT PAVEMENT REPAIR SECTION

N.T.S

B



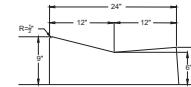
NOTE:

WHEN USED ON THE HIGH SIDE OF ROADWAY, THE CROSS-SLOPE OF THE GUTTER SHALL MATCH THE CROSS-SLOPE OF THE ADJACENT PAVEMENT AND THE THICKNESS OF THE LIP SHALL BE 6"

CURB & GUTTER TYPE "F"

N.T.S

C



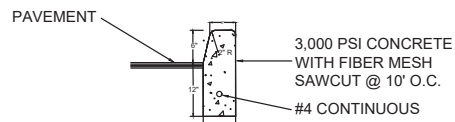
NOTE:

WHEN USED ON THE HIGH SIDE OF ROADWAY, THE CROSS-SLOPE OF THE GUTTER SHALL MATCH THE CROSS-SLOPE OF THE ADJACENT PAVEMENT AND THE THICKNESS OF THE LIP SHALL BE 6"

MIAMI CURB DETAIL

N.T.S

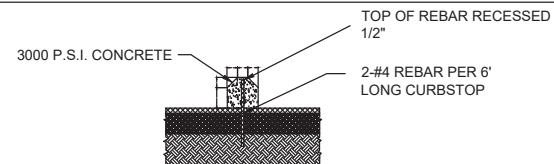
D



TYPE D CURB

N.T.S

E



WHEEL STOP

N.T.S

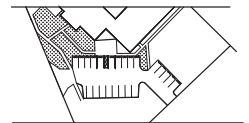
F

HERNANDO COUNTY
B.O.C.C
FACILITIES DIVISION
1525 EAST JEFFERSON ST.
BROOKSVILLE FL. 34601

PROJECT LOCATION:
LYKES LIBRARY
PARKING LOT
RESTORATION
238 Howel Ave.
Brooksville, FL. 34601

REVISIONS:

No:	Description	Date:



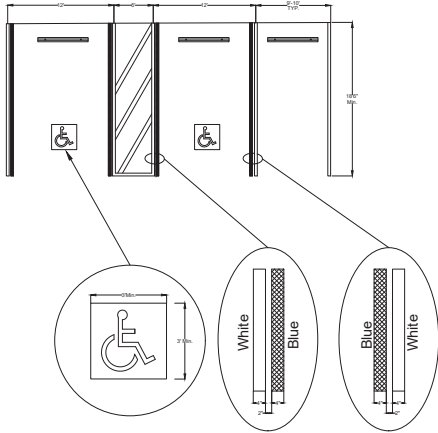
DRAWING TITLE:
Existing Parking Lot

DRAWING NUMBER:

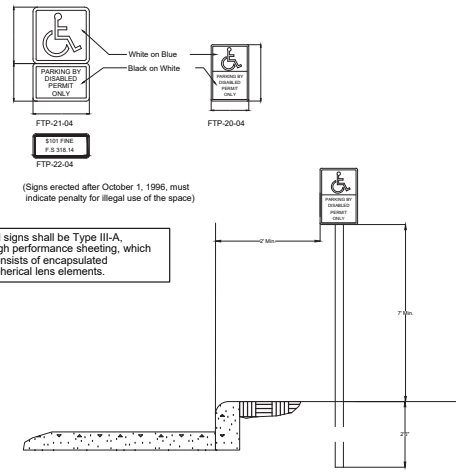
C-4

DRAWN BY: SDB
SCALE: NTS

- All parking space lines to be 4" wide and white unless otherwise noted.
- Use of pavement symbol in handicapped parking spaces is optional, but when used shall be 3 ft. to 5 ft. high and white symbol on blue background.
- The access aisle shall be striped diagonally to designate it as a no parking zone, and shall be white in color. Curb ramps must be located outside of disabled parking spaces and access aisles.



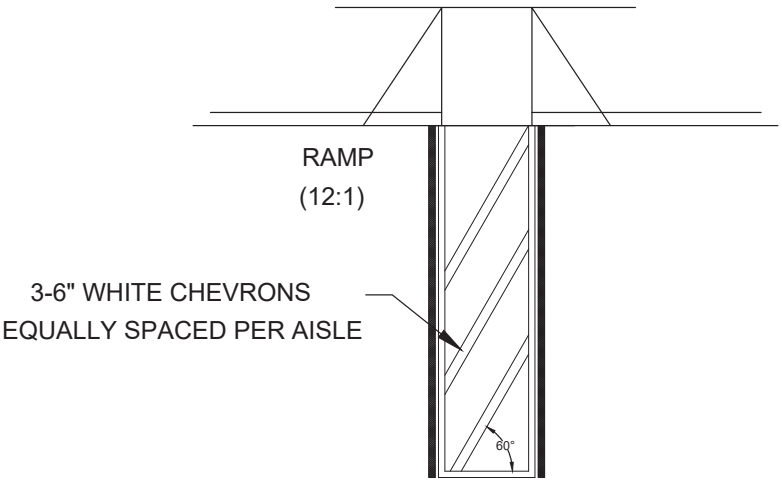
G



- Handicap sign(s) may be affixed on permanent structures in lieu of installing on post

H

All ramps shall be in compliance with FDOT index 304 & 310



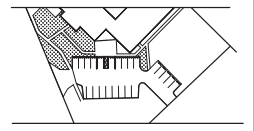
I

**HERNANDO COUNTY
B.O.C.C
FACILITIES DIVISION**
1525 EAST JEFFERSON ST.
BROOKSVILLE FL. 34601

PROJECT LOCATION:
**LYKES LIBRARY
PARKING LOT
RESTORATION**
238 Howel Ave.
Brooksville, FL. 34601

REVISIONS:

No:	Description	Date:



DRAWING TITLE:
**Existing Parking
Lot**

DRAWING NUMBER:
C-5
DRAWN BY: SDB
SCALE: NTS