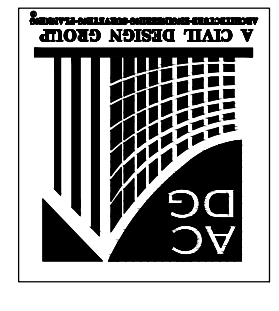


DATE:	RICHARD J. MATASSA
EXAMINED AND APPROVED:	PE #1431
JOB NUMBER:	185007
RANGE:	196
TWP:	23S
SEC:	20
DATE:	02/11/19
AS NOTED:	0.5
SCALE:	0.5
PN/DRWN BY:	GJS

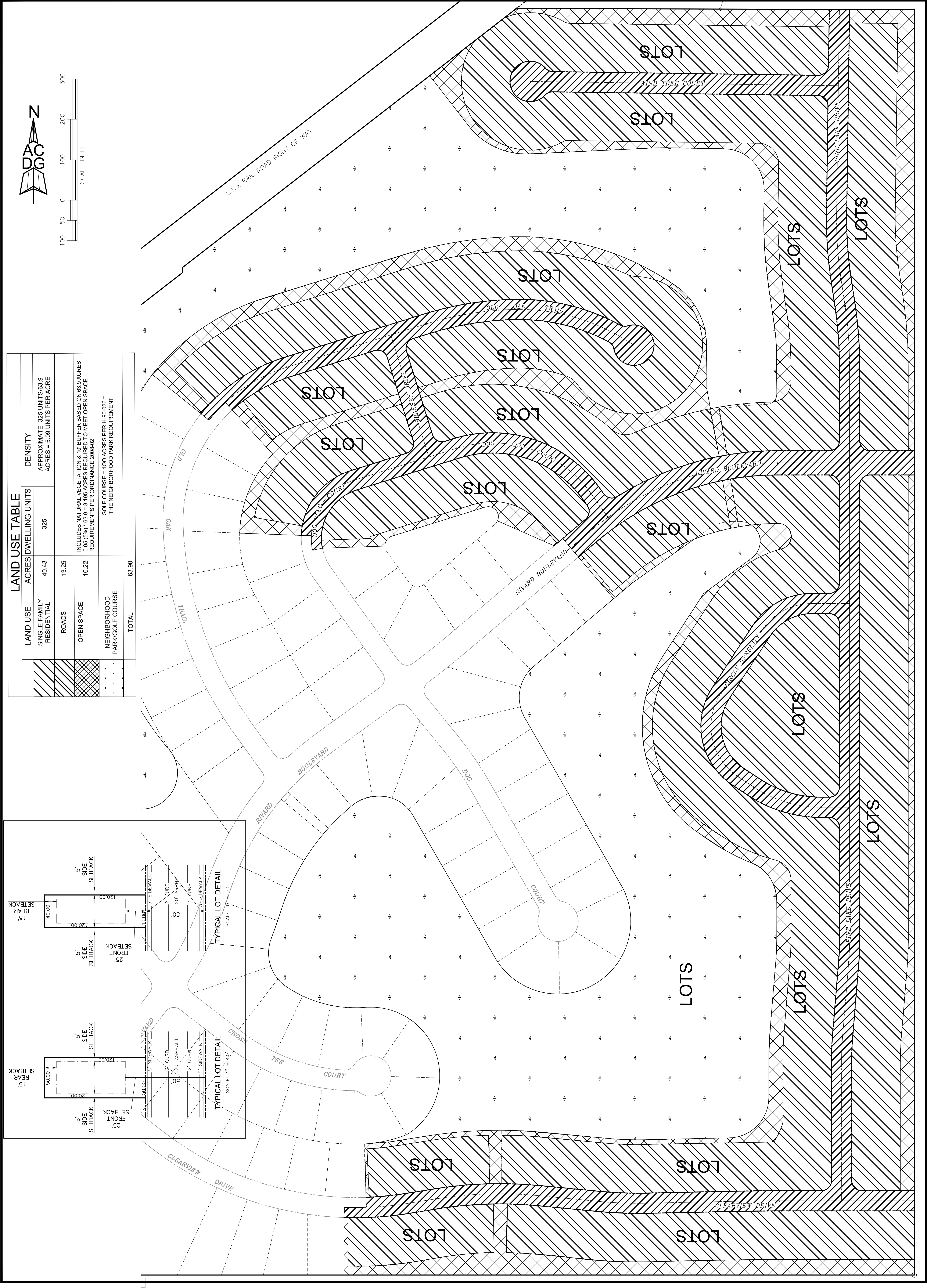
# TRAILS AT RIVARD PHASE II MASTER SITE PLAN

COSTA HOMES, INC.  
HERNANDO COUNTY, FLORIDA



A CIVIL DESIGN GROUP, L.L.C.  
ARCHITECTURE-ENGINEERING-SURVEYING-PLANNING  
12529 Spring Hill Drive Spring Hill, FL 34609  
Phone - (352) 683-9566 Fax - (352) 683-9567  
WWW.acivildesign.com  
Registration # AB-26003438  
LARRY R. YOUNG  
PE #1431

REVISION HISTORY	REV. BY	DATE

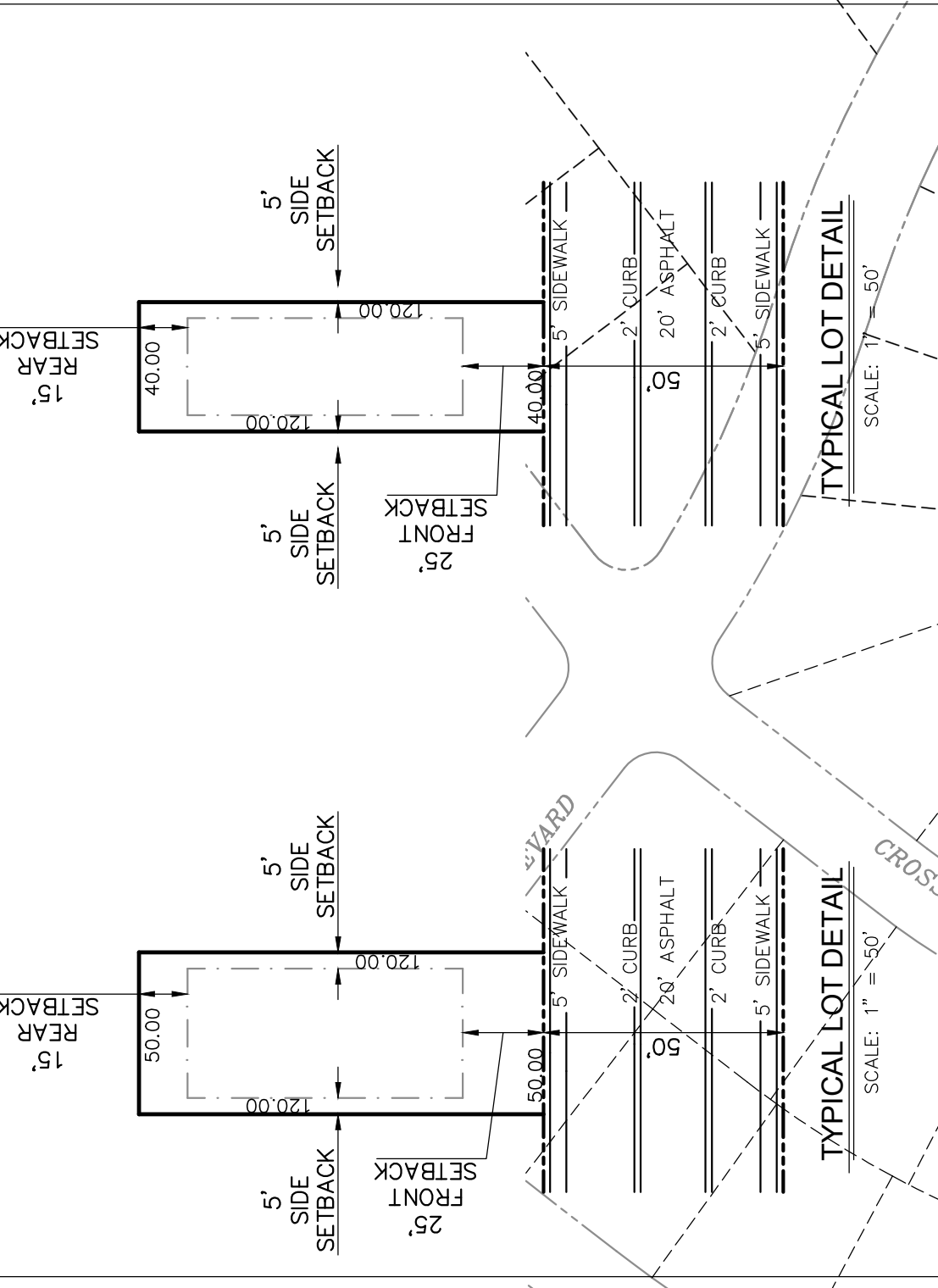


LAND USE	ACRES/DWELLING UNITS	DENSITY
SINGLE FAMILY RESIDENTIAL	40.43	325
ROADS	13.25	
OPEN SPACE	10.22	
NEIGHBORHOOD PARK/GOLF COURSE		
<b>TOTAL</b>	<b>63.90</b>	

APPROXIMATE 325 UNITS/63.9 ACRES = 5.08 UNITS PER ACRE

INCLUDES NATURAL VEGETATION & 10' BUFFER BASED ON 63.9 ACRES  
0.05 (5%) \* 63.9 = 3.195 ACRES REQUIRED TO MEET OPEN SPACE  
REQUIREMENTS PER ORDINANCE 2008-02

GOLF COURSE = 100 ACRES PER H-90-026 =  
THE NEIGHBORHOOD PARK REQUIREMENT



This plan shall not be used as a construction document, unless stamped "APPROVED FOR CONSTRUCTION."