

Rainfall and River Flows

Rainfall

This page compares rainfall for the one, two and three years to normal levels. Rainfall maps are updated monthly.

Rainfall Distribution

April 2014 through March 2014



Rainfall Distribution

April 2013 through March 2013

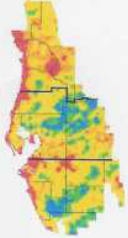


(<http://www4.sfwmd.state.fl.us/RDDataImages/mediamap-1yr.png>)

2yr.png)

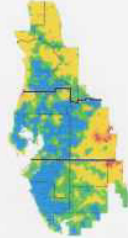
Rainfall Distribution

April 2011 through March 2011



Rainfall Distribution

June through September 2014 "Wet Season"



(<http://www4.sfwmd.state.fl.us/RDDataImages/mediamap-3yr.png>)

seasonal.png)

Rainfall map legend

Very wet Wetter than normal Normal Drier than normal Very dry