

# SITE DATA

ADDRESS: 500 VILLAGE PL, LONGWOOD FL, 32779

PARKING PROPOSED :

24 SPACES

PARCEL ID: R16 223 17 3830 0170 0170

TOTAL SITE AREA: 0.92 ACRES +/-

17 PAVED SPACES  
(1 ACCESSIBLE STALL)  
+7 GRASS SPACES  
(30% of Req.)

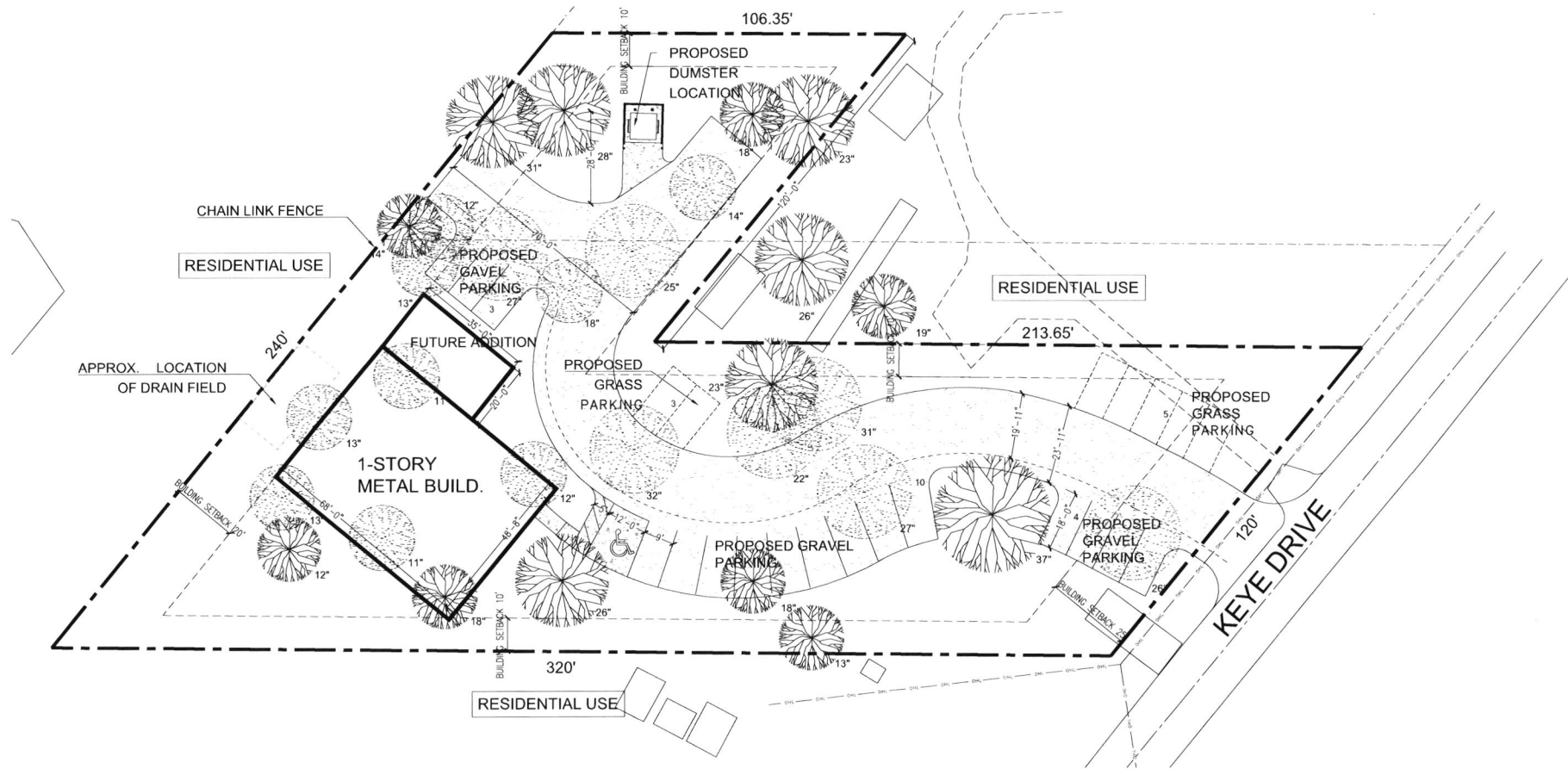
PARKING REQUIRED: 24 SPACES (0.3 / SEAT)  
(PLACE OF PUBLIC ASSEMBLY)

PROPOSED BUILDING DATA:

ACCESSIBLE SPACES  
REQUIRED 1 / 24

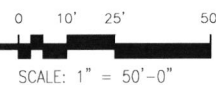
COMMUNITY CENTER 3,475 GSF +/-  
FUTURE ADDITION 700 GSF

HEIGHT: 35'-0



## UUCiP Community Center

PRELIMINARY SITE PLAN (NOT FOR CONSTRUCTION)



**nioutsidein**  
architecture llc  
interior design  
planning  
leed consulting