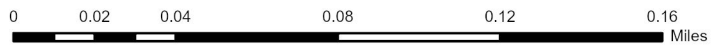
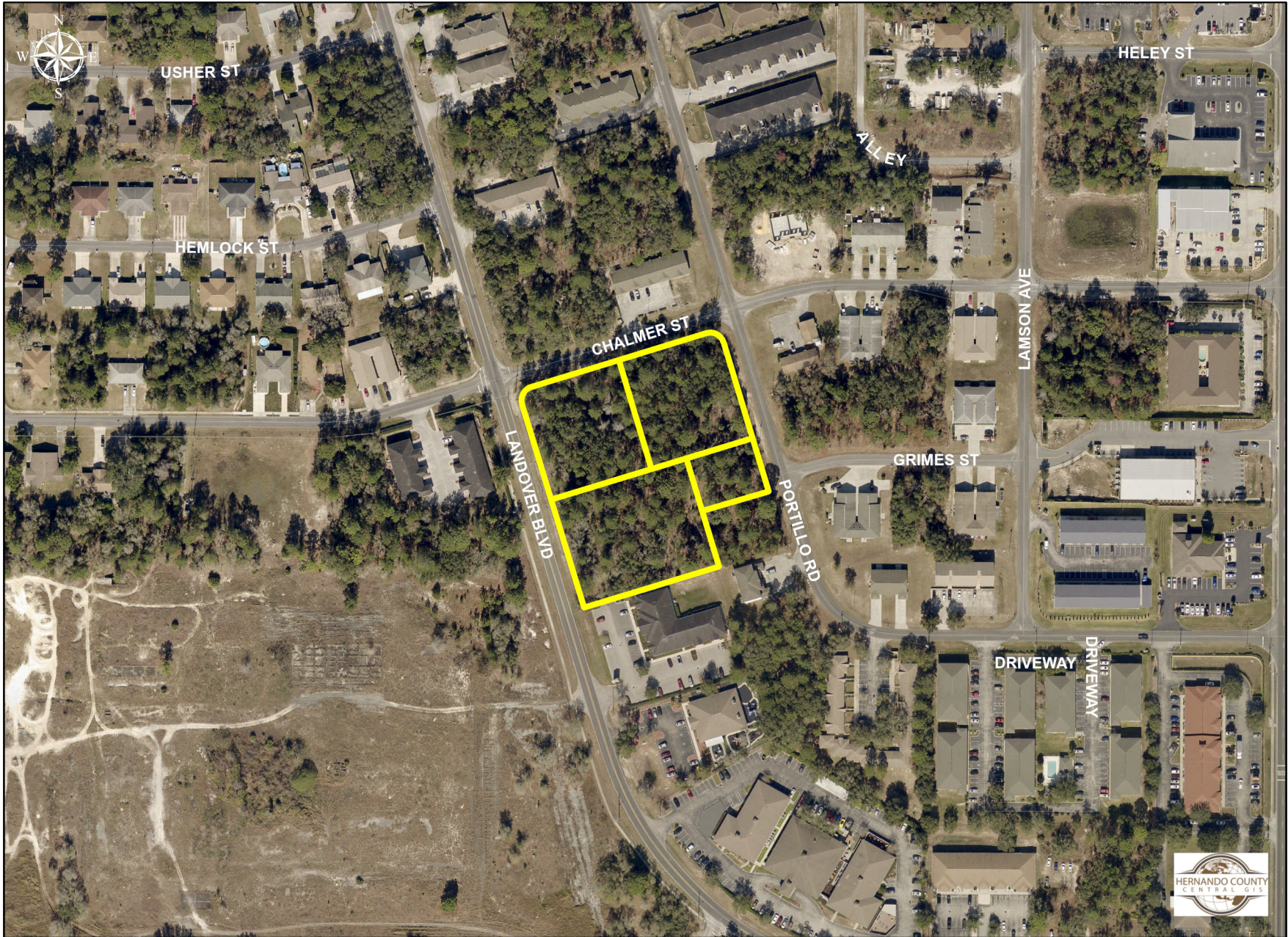




# H-22-70

Photo date: 2020

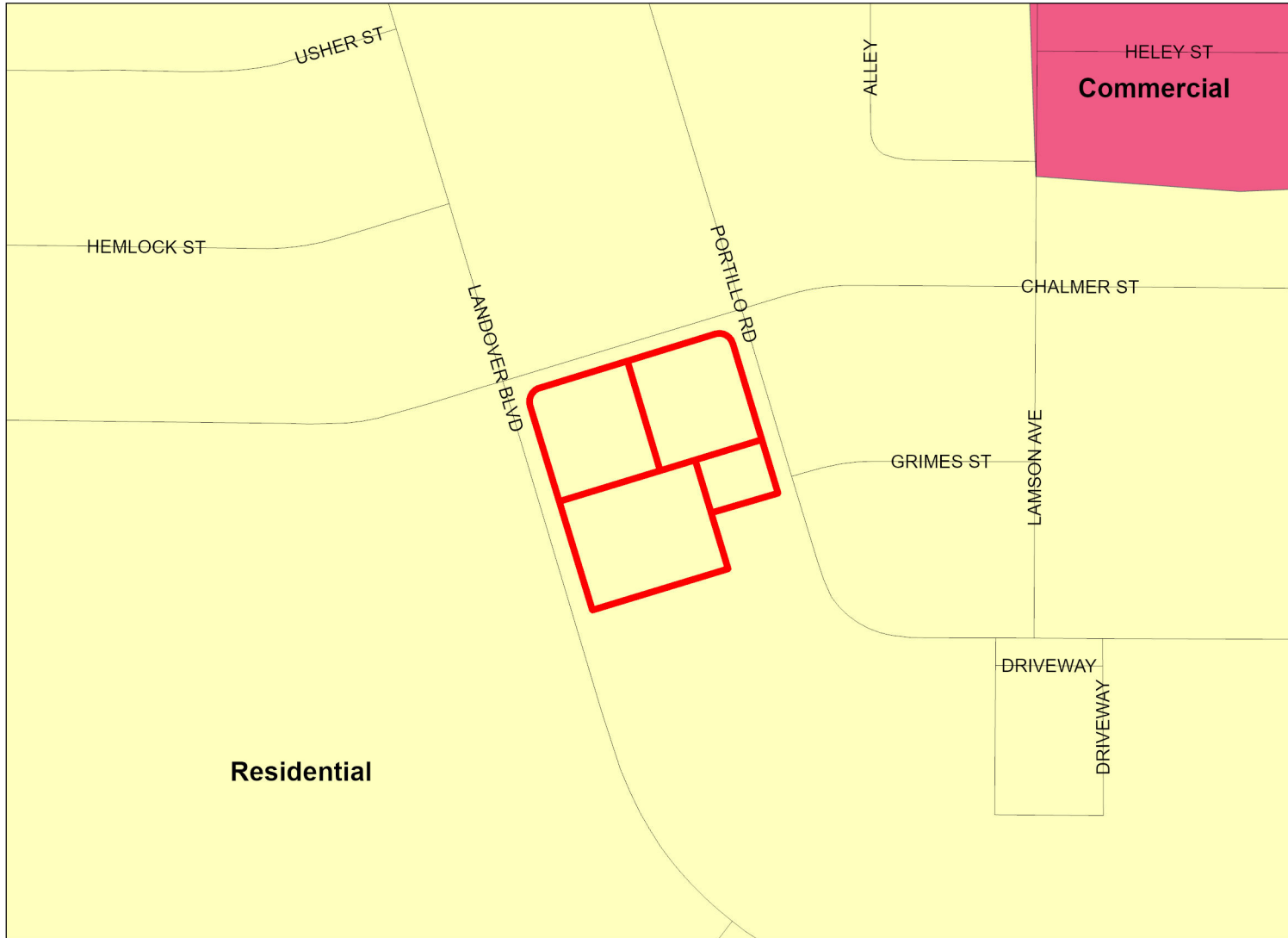
This map was prepared by this office to be used as an aid in land parcel location and identification only. All land locations, right-of-way widths, acreages, and utility locations are subject to field survey or other appropriate verification.



# Hernando County Comprehensive Plan Map

Existing Future Land Use: H-22-70

Version Date: 07/14/2022



	H-22-70
	FLU Riverine District
	Regional Commercial
<b>FLU</b>	
	CITY
	COMMERCIAL
	CONSERVATION
	EDUCATION
	INDUSTRIAL
	MINING
	PLANNED DEVELOPMENT
	PUBLIC FACILITIES
	RECREATION
	RESIDENTIAL
	RURAL

**Future Land Use Map**

PLEASE REFER TO THE TEXT PORTION OF THE COMPREHENSIVE PLAN IN CONJUNCTION WITH THE USE OF THE FUTURE LAND USE MAP SERIES.

NOTE: THE RIVERINE DISTRICT IS SHOWN AS A LINE SETBACK PARALLEL TO THE WEEKI WACHEE, MUD AND WITHLACOOCHEE RIVERS.

