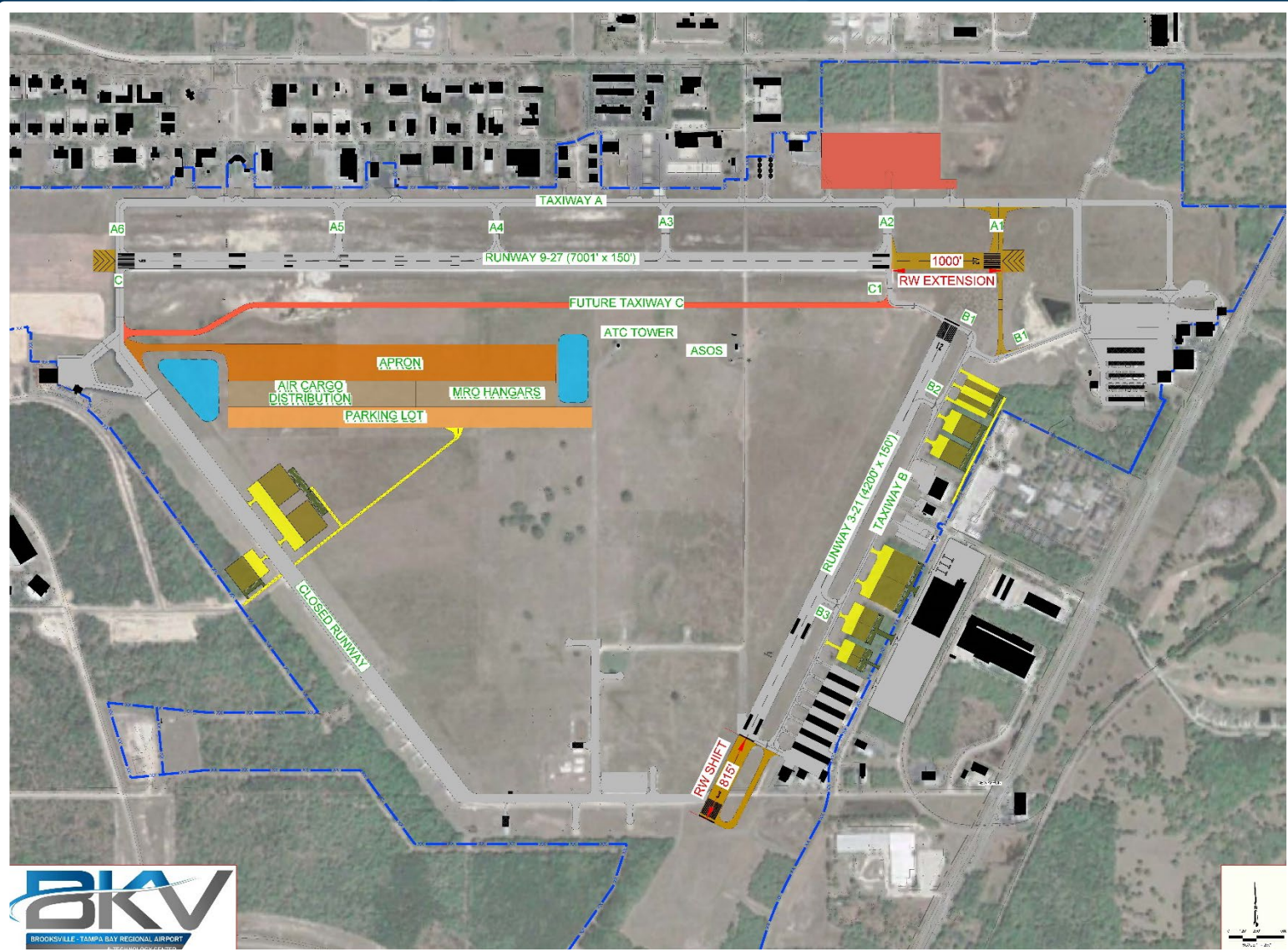


# Infield Infrastructure Development Plan

- April-October 2023
- Analysis of airport infield bordered by both active runways and inactive runway
- Study will include:
  - New roadways and security improvements
  - Stormwater calculations and modeling
  - Utility requirements (water, electricity, sewer, gas, and tele-communications)
  - Implementation plan
  - Cost estimates
  - Funding plan



## Multihog CV Sweeper

