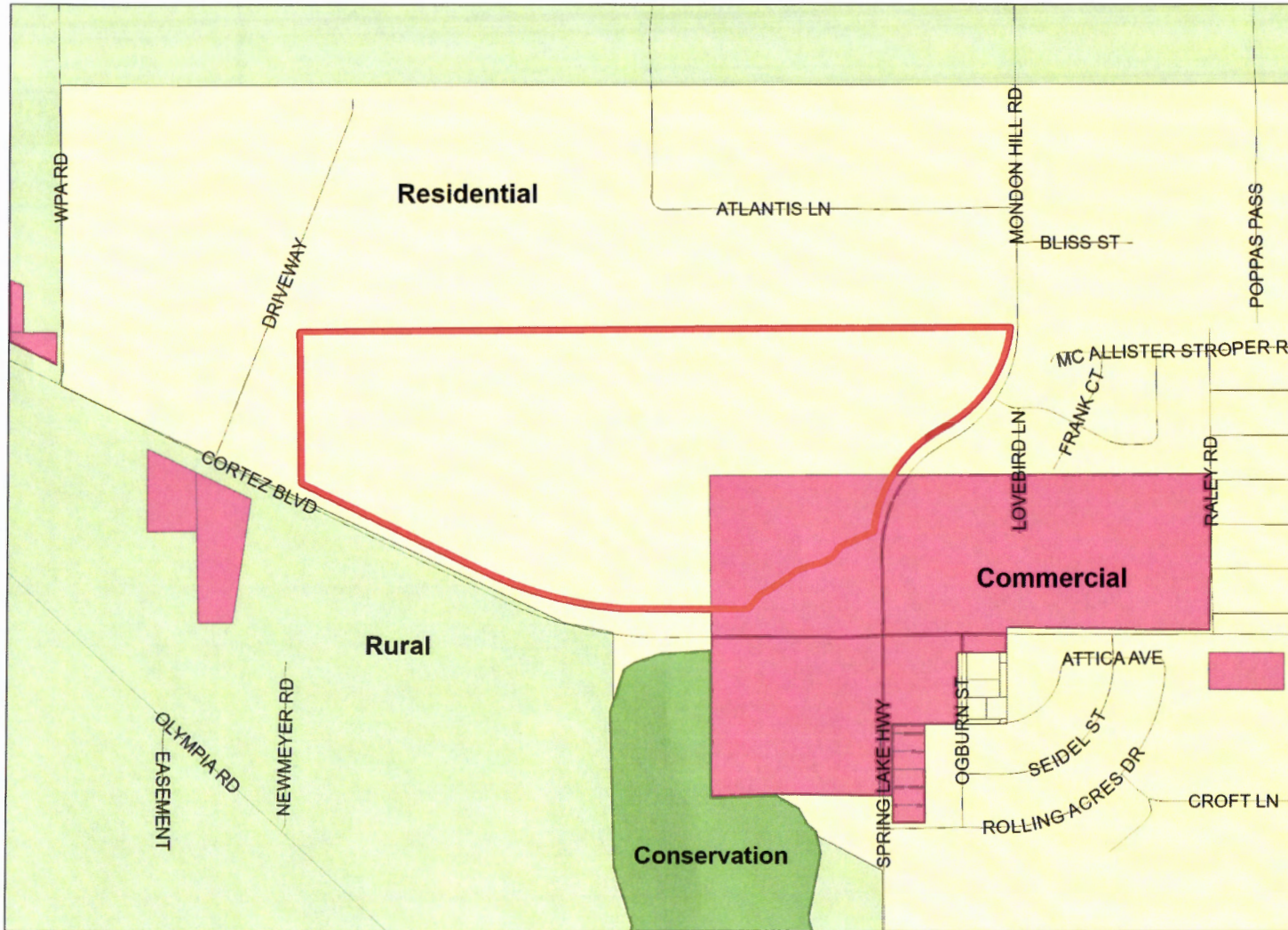


Hernando County Comprehensive Plan Map

Existing Future Land Use: H-24-14
Version Date: 12/09/2022



H-24-14

FLU Riverine District

Regional Commercial

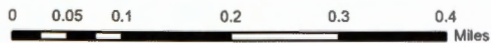
FLU

- CITY
- COMMERCIAL
- CONSERVATION
- EDUCATION
- INDUSTRIAL
- MINING
- PLANNED DEVELOPMENT
- PUBLIC FACILITIES
- RECREATION
- RESIDENTIAL
- RURAL

Future Land Use Map

PLEASE REFER TO THE TEXT PORTION OF THE COMPREHENSIVE PLAN IN CONJUNCTION WITH THE USE OF THE FUTURE LAND USE MAP SERIES.

NOTE: THE RIVERINE DISTRICT IS SHOWN AS A LINE SETBACK PARALLEL TO THE WEEKI WACHEE, MUD AND WITHLACOOCHEE RIVERS.



Date of mapping: 03/28/2024

