



Adopt-A-Road Program

Safety Training

Be Prepared



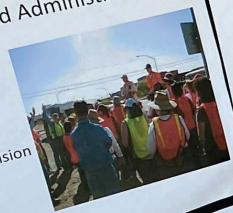
- Work Conditions
- Safety Briefing
- Vests
- Car Pool
- Post Signs
- Traffic Safety
- Juvenile Supervision
- Headphones
- Alcohol or Drugs
- Constricted Areas or Construction Zones

Safety



Supervision and Administration

- Agreement
- Liability Waiver
- Group Leader
- Safety Training
- Juvenile Supervision
- Pick-up
- Reports



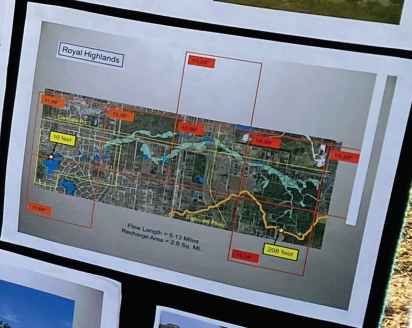
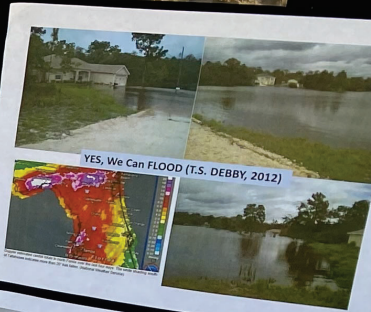
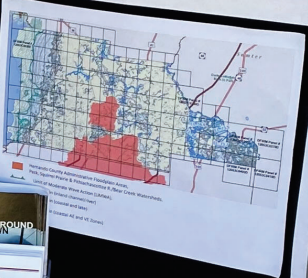
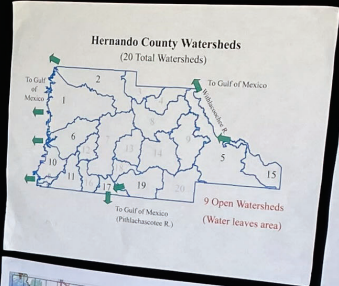
Procedures

- Avoid touching litter
- Fill bags only 2/3 full
- Tie bags securely
- Secure storage
- Home pickup
- Special pickup
- Submit report



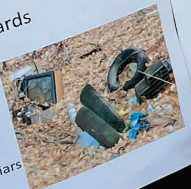
Erosion Control BMPs At a Glance

Silt Fence	Waterbody Protection
Best Management Practices	Best Management Practices
Stream Protection	Waste
Entrance Stabilization	Best Management Practices



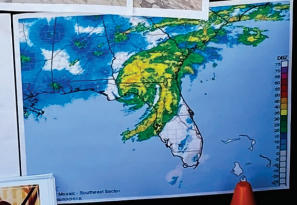
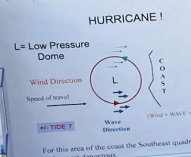
Hazards

- Hazardous Material
- Suspicious Material
- Heavy Objects
- Dead Animals
- Wildlife
- Poison Ivy and Briars
- Insecticide Zones



Hernando County Stormwater Management
(352) 754-4062

- Be Safe
- Have Fun
- Take Pride



Important Fertilizer Tips

HERNANDO COUNTY ONE DAY NOXIOUS TREE

Be a Good Neighbor & Clean Up After Your Pet!

Call (325) 754-4062 for more information



Where Does All The Rain Go?

Hurricanes



ADOPT-A-ROAD

Hernando County Division of Transportation Services



WATER QUALITY OF OFFICER SNOOK

Important Wastewater Information For Planting New Sod

Here are some helpful tips!

Important Wastewater Information For Planting New Sod

Hernando County's Emergency Trench Program

www.adoptahernando.com

After the Storm

A Guide to Understanding Stormwater