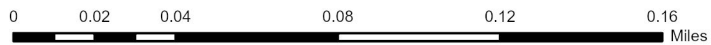
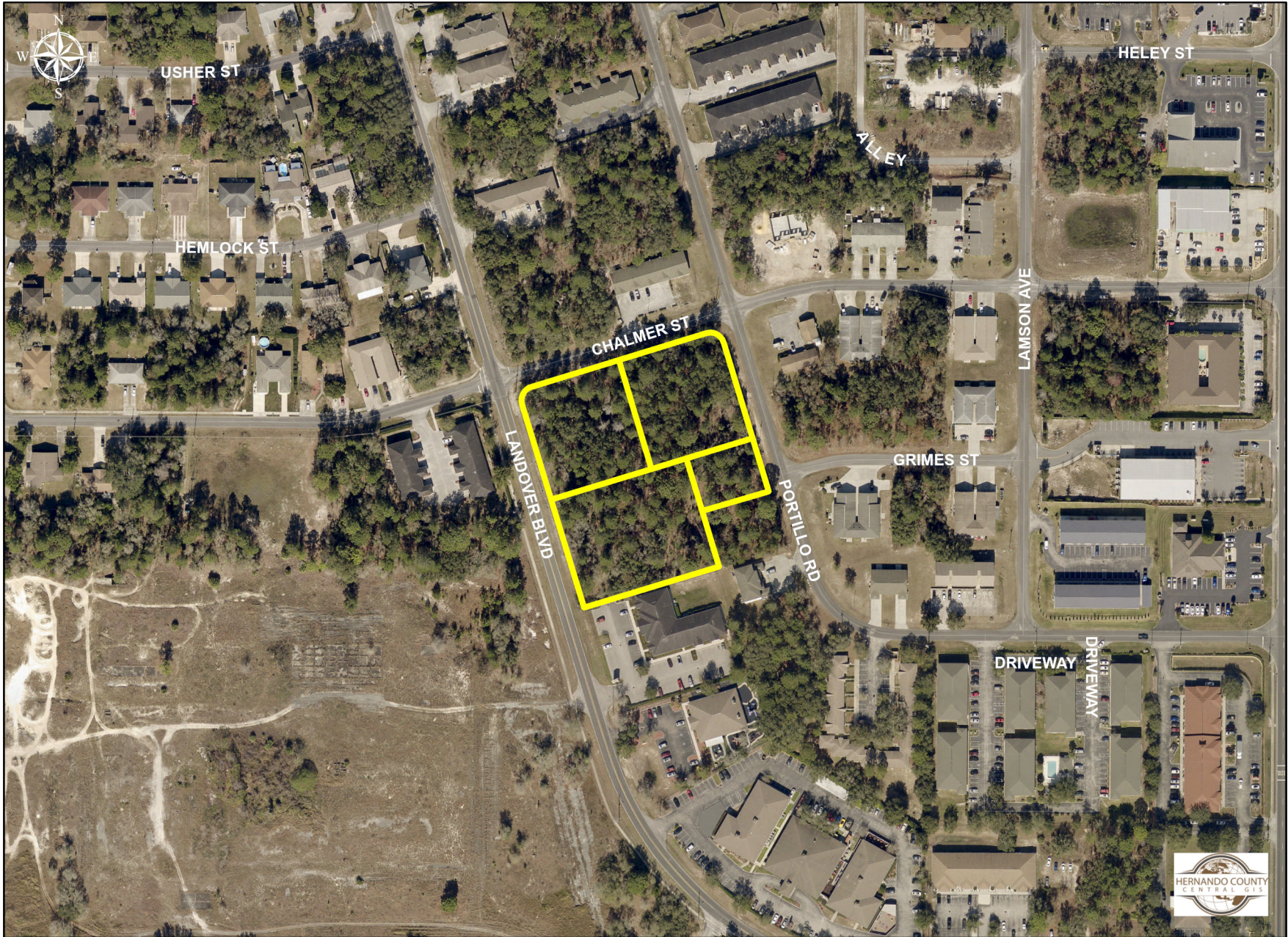


H-22-70

Photo date: 2020

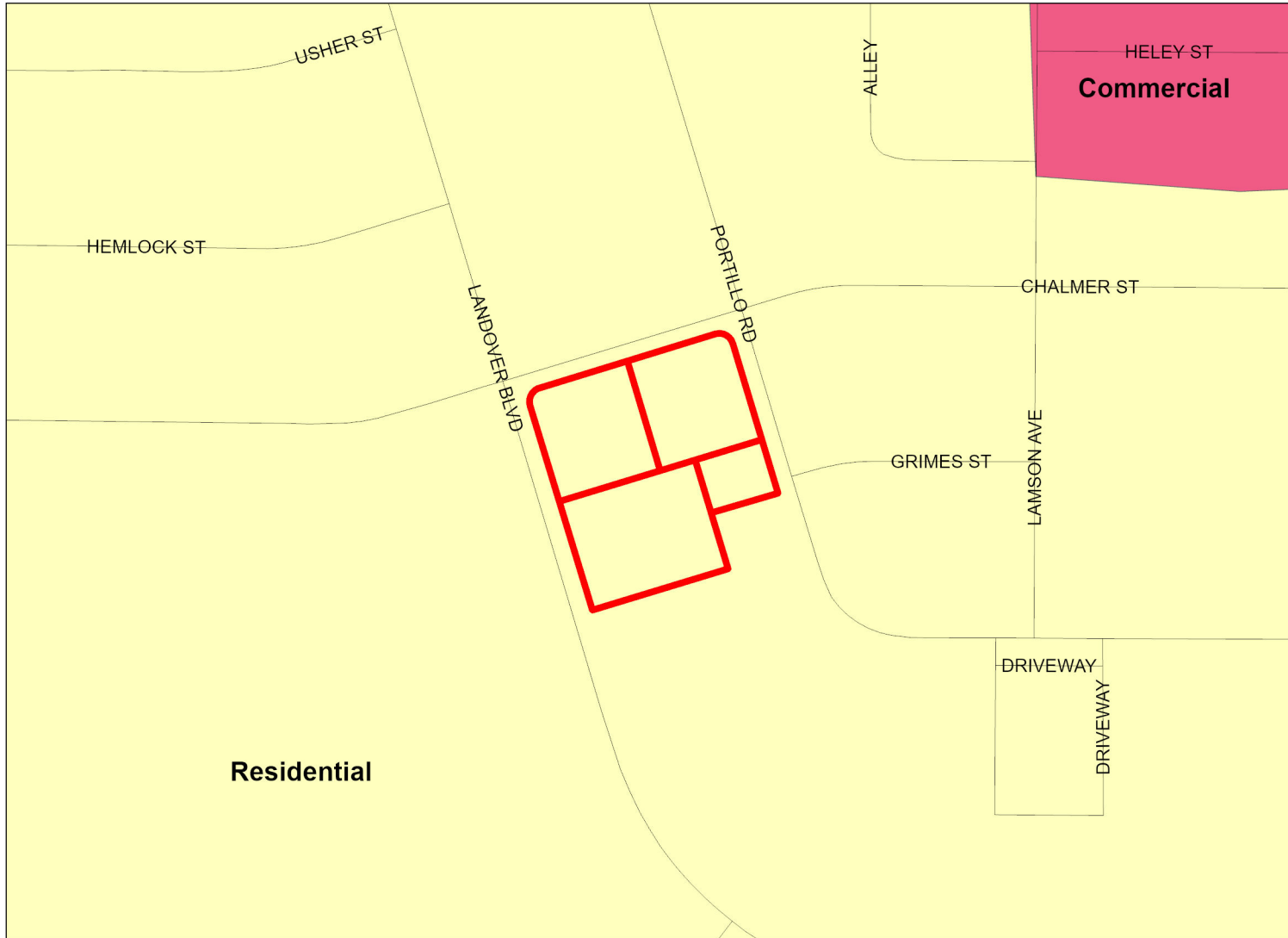
This map was prepared by this office to be used as an aid in land parcel location and identification only. All land locations, right-of-way widths, acreages, and utility locations are subject to field survey or other appropriate verification.



Hernando County Comprehensive Plan Map

Existing Future Land Use: H-22-70

Version Date: 07/14/2022



	H-22-70
	FLU Riverine District
	Regional Commercial
FLU	
	CITY
	COMMERCIAL
	CONSERVATION
	EDUCATION
	INDUSTRIAL
	MINING
	PLANNED DEVELOPMENT
	PUBLIC FACILITIES
	RECREATION
	RESIDENTIAL
	RURAL

Future Land Use Map

PLEASE REFER TO THE TEXT PORTION OF THE COMPREHENSIVE PLAN IN CONJUNCTION WITH THE USE OF THE FUTURE LAND USE MAP SERIES.

NOTE: THE RIVERINE DISTRICT IS SHOWN AS A LINE SETBACK PARALLEL TO THE WEEKI WACHEE, MUD AND WITHLACOOCHEE RIVERS.

