

ATLANTA AVENUE

+/- 379'

ATLANTA AVENUE

U.S. HWY 19 (COMMERCIAL WAY)

+/- 800'

125' SETBACK

50' SETBACK

PROPOSED
FIRE STATION 16
+/- 11,600 GSF

PARKING

(ACCESS DRIVE) RICHMOND STREET

PROPOSED
STORMWATER
POND
APPROXIMATE SIZE

+/- 730'

50' SETBACK

50' SETBACK

+/- 378'

+/- 167'

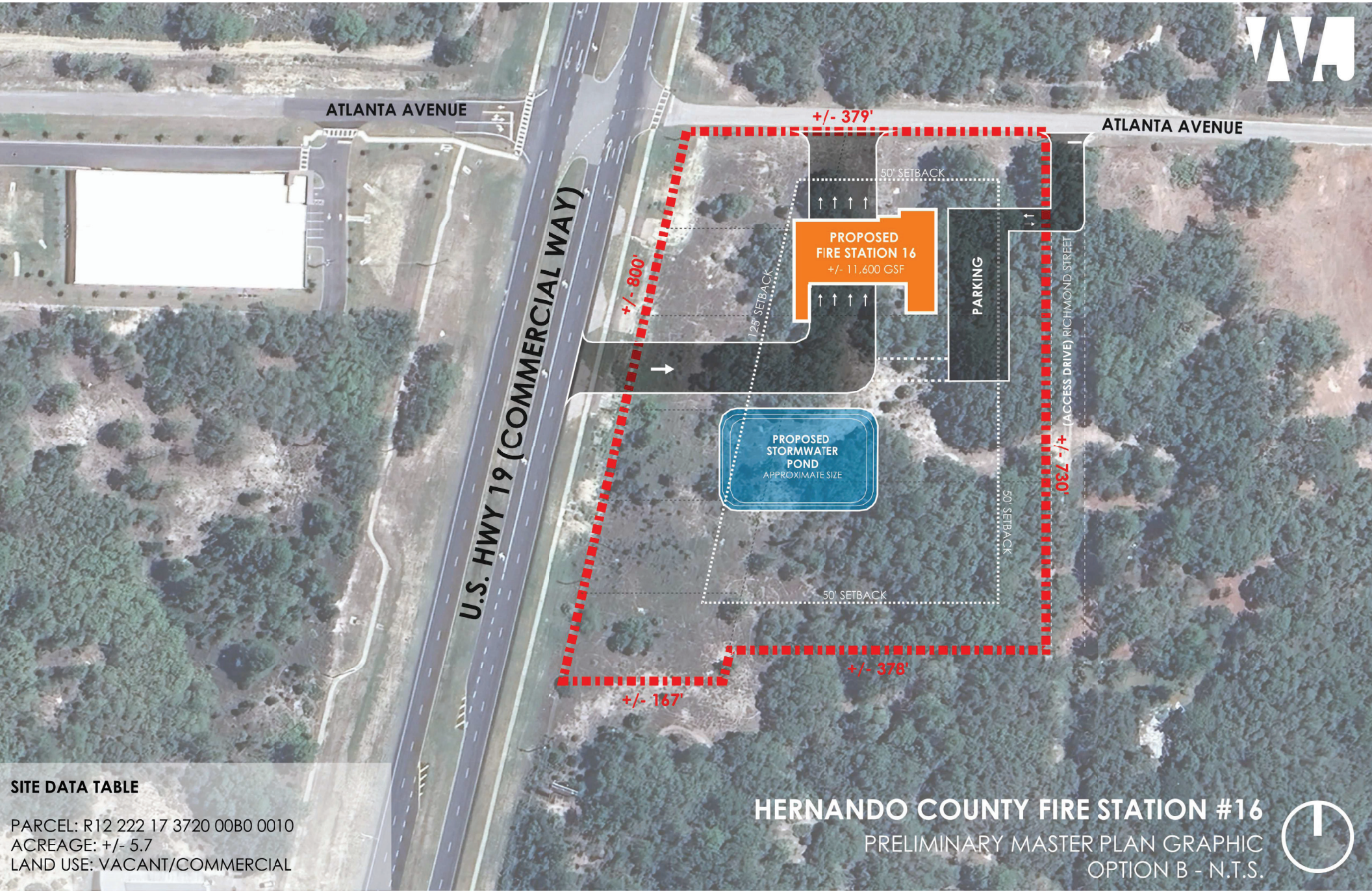
SITE DATA TABLE

PARCEL: R12 222 17 3720 00B0 0010
 ACREAGE: +/- 5.7
 LAND USE: VACANT/COMMERCIAL

HERNANDO COUNTY FIRE STATION #16

PRELIMINARY MASTER PLAN GRAPHIC
OPTION A - N.T.S.





SITE DATA TABLE

PARCEL: R12 222 17 3720 00B0 0010
 ACREAGE: +/- 5.7
 LAND USE: VACANT/COMMERCIAL

HERNANDO COUNTY FIRE STATION #16
 PRELIMINARY MASTER PLAN GRAPHIC
 OPTION B - N.T.S.

