


SPOT ZONING

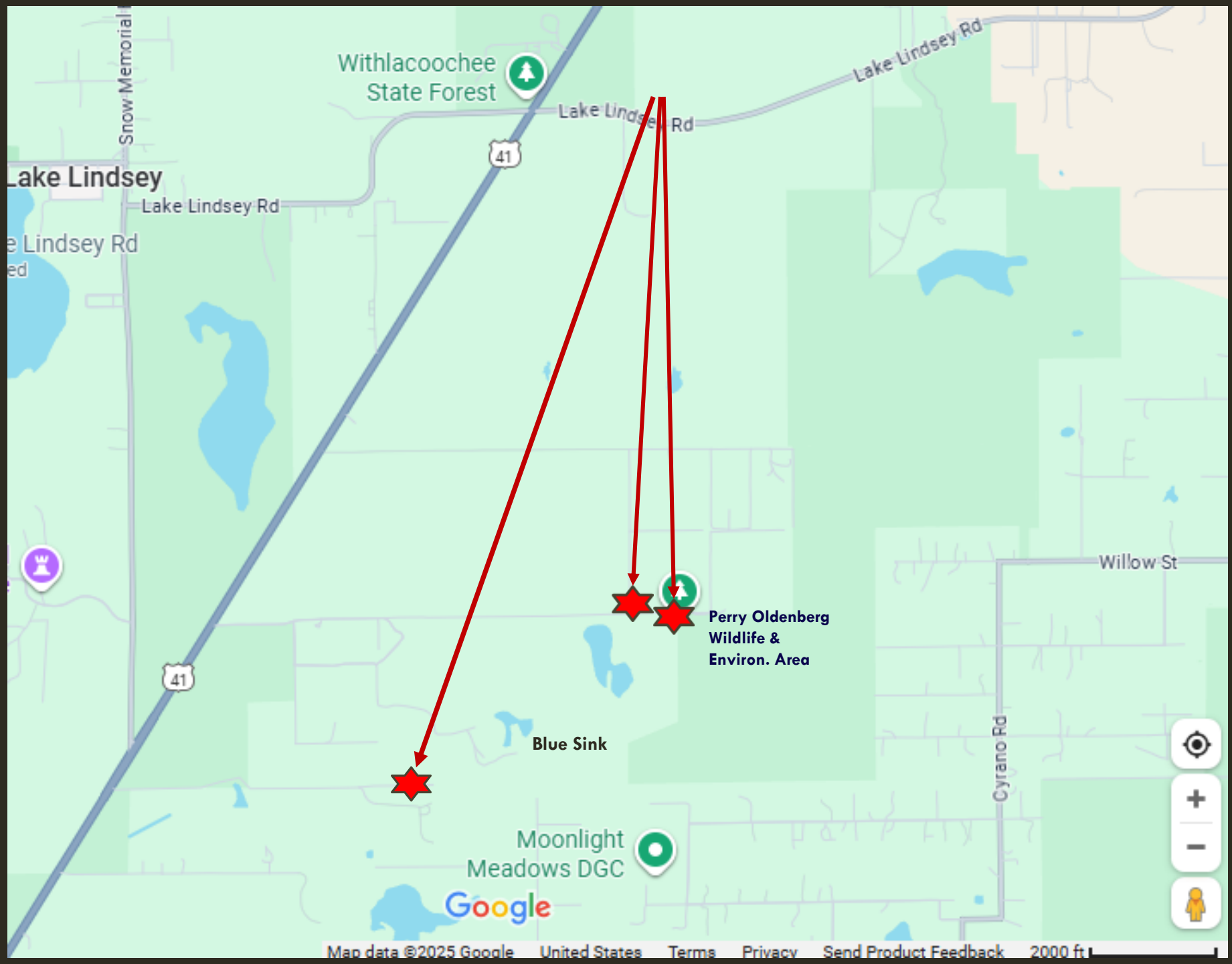
“THE PROCESS OF SINGLING OUT A SMALL PARCEL OF LAND FOR A USE CLASSIFICATION TOTALLY DIFFERENT FROM THAT OF THE SURROUNDING AREA FOR THE BENEFIT OF THE OWNER OF SUCH PROPERTY AND TO THE DETRIMENT OF OTHER OWNERS.”

Considerations:

- “anticipated public benefit”
- “consistency with surrounding zoning and uses”



- Living within 3 miles of golf course =  risk of Parkinson's Disease
- Environmental risk factors – pesticides used on golf courses
“...Leech into the groundwater and contaminate drinking water”
- 82% greater odds of PD in vulnerable water areas farther than 3 miles!
- US pesticide application can be 15X higher than in Europe!



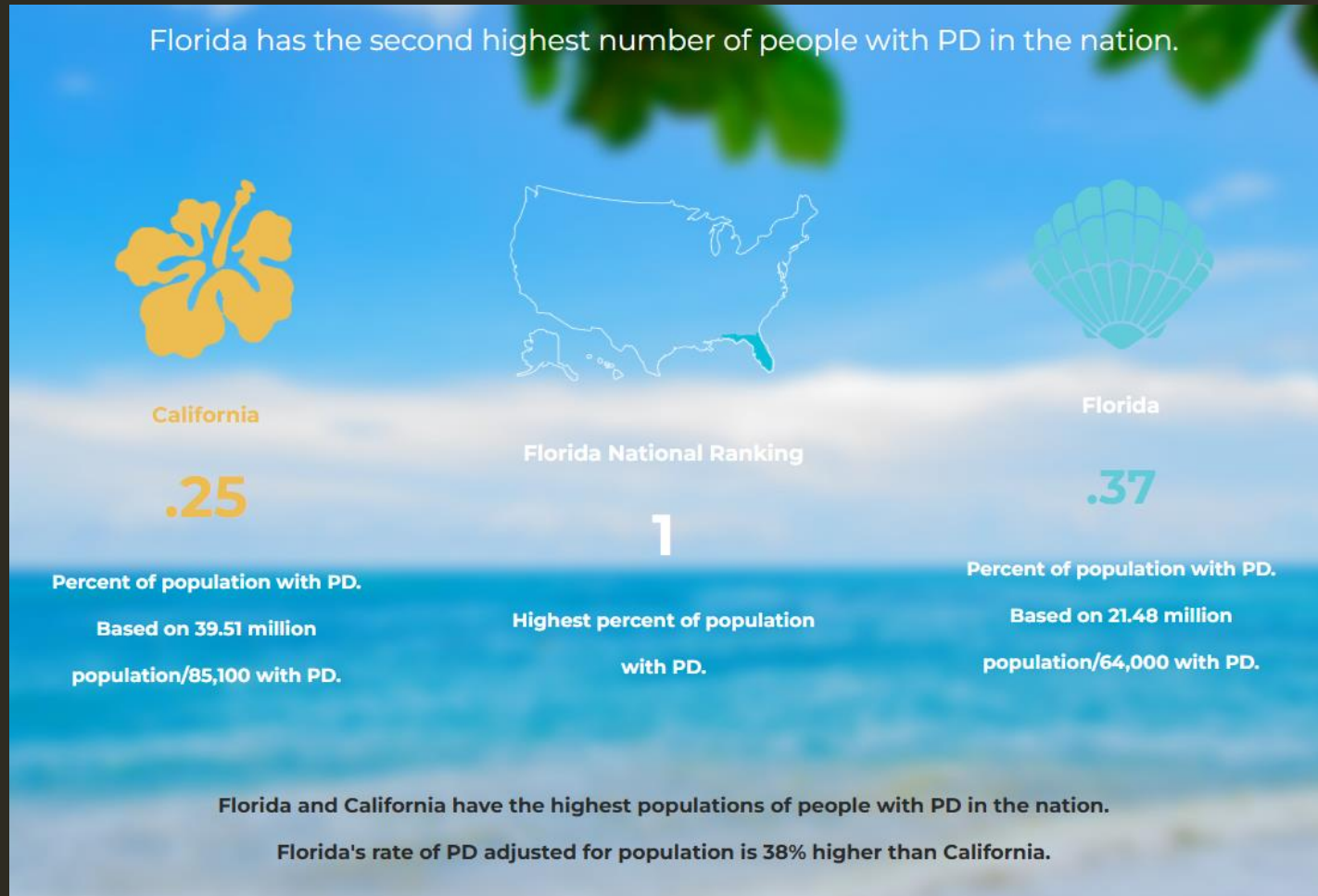


GOLFLINK.COM

- 14 Golf Courses in BROOKSVILLE
- 23 Golf Courses within 20 MILES

= 37 Golf Courses

- Florida - 1,364 golf courses / California - 900 - 982 golf courses
- Adjusted for population - **Florida's PD rate is 38% higher** than California!



Florida Parkinson Rate



PARKINSON'S

National Ranking % Population

1

Florida has the highest percentage of
state population with PD.

Florida PD Population

79990

National Ranking Total Population

2

Florida has the second highest
number of people with PD.