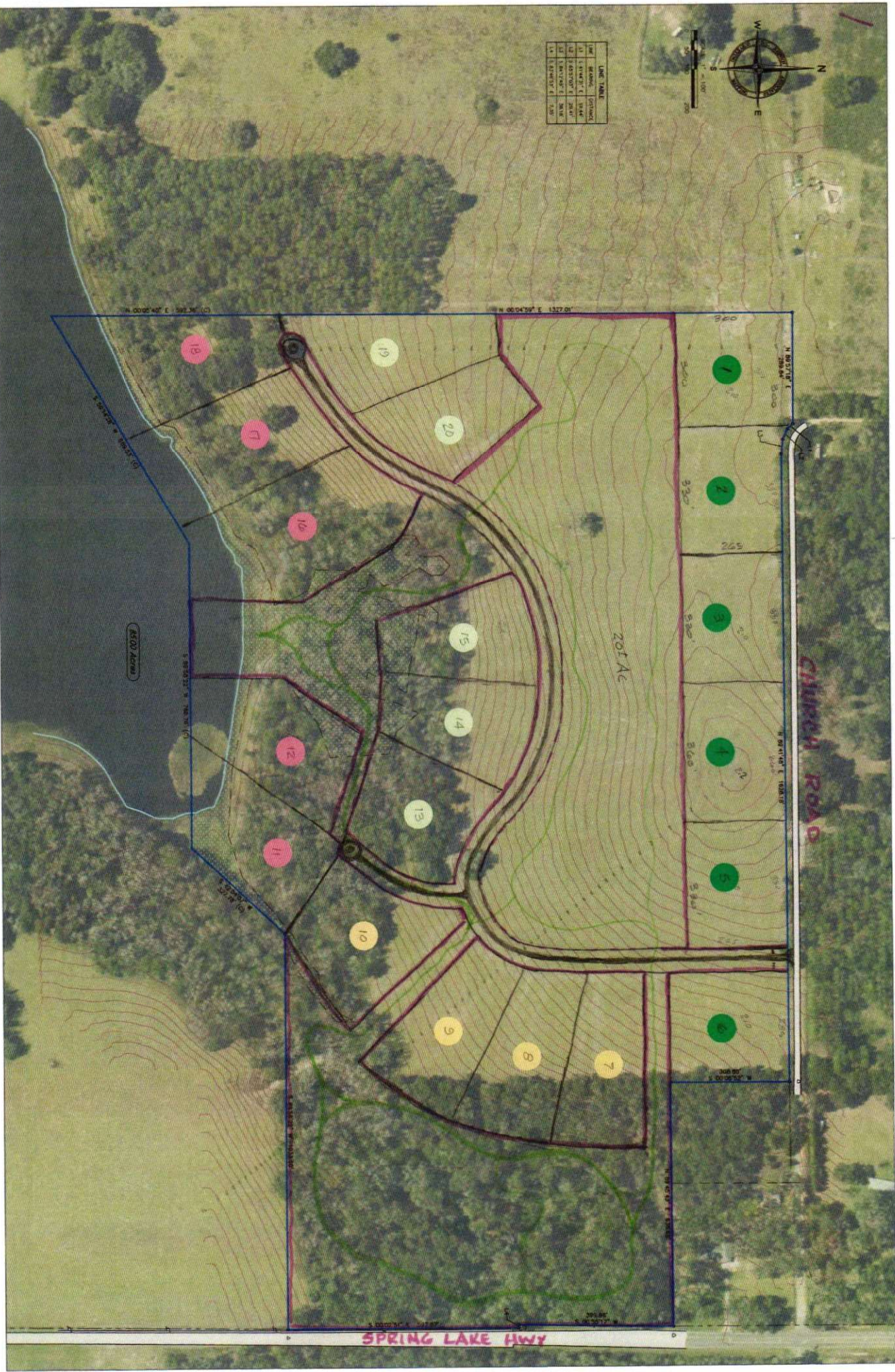


LINE	BEARING	DISTANCE
1	N 89° 57' 10" E	288.84'
2	S 89° 57' 10" W	288.84'
3	N 89° 57' 10" E	288.84'
4	S 89° 57' 10" W	288.84'
5	N 89° 57' 10" E	288.84'
6	S 89° 57' 10" W	288.84'



SPRING LAKE HWY

CLIPPER ROAD

8500 Acres

201 Ac

3/1/10