

New Walmart Fuel Station

H-26-09

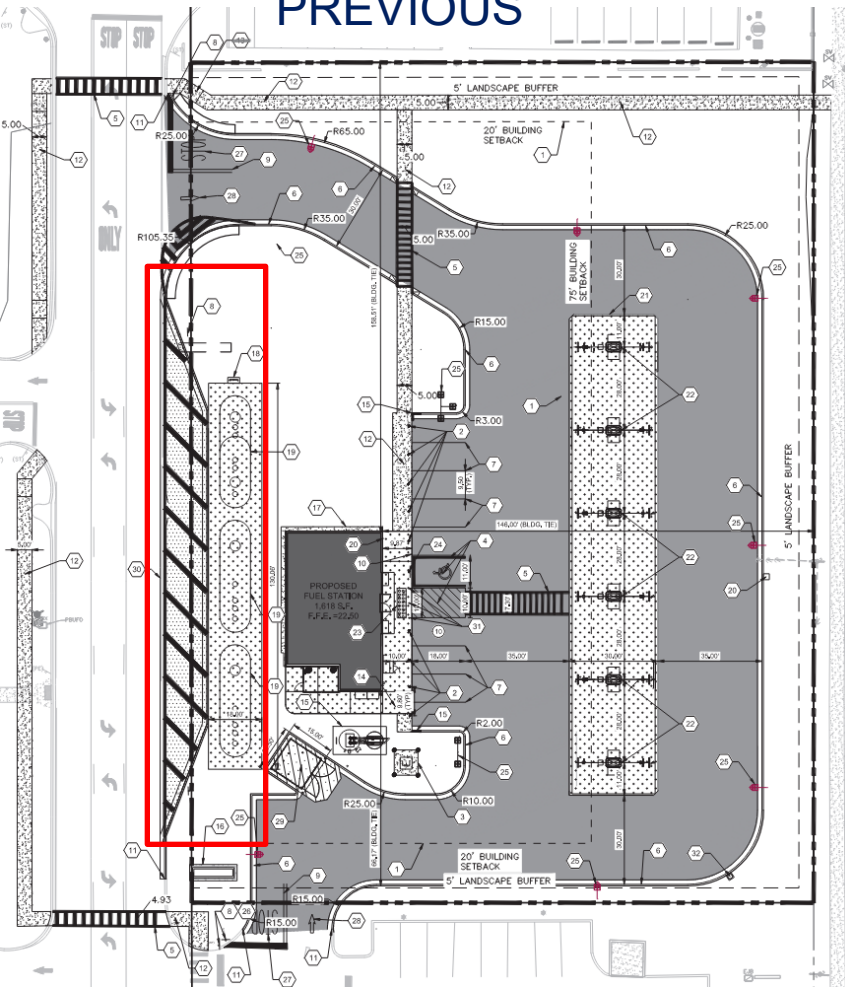
1739 Commercial Way, Spring Hill, FL 34606



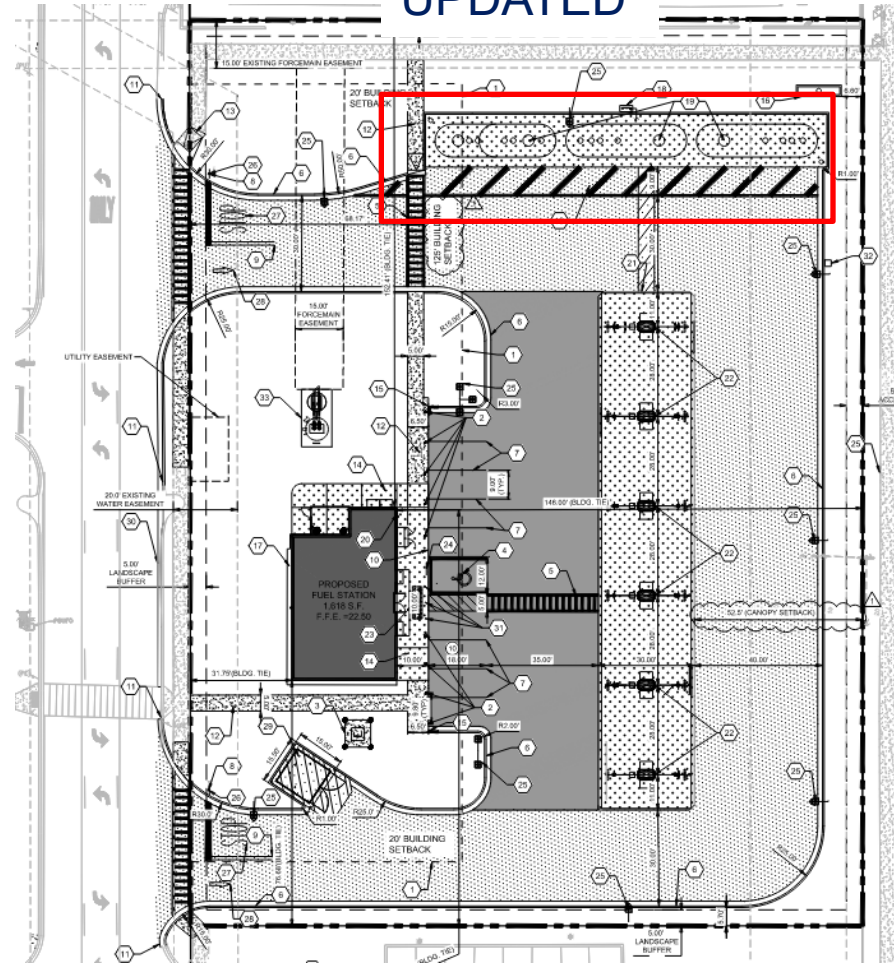
Site Plan Updates

- Underground fuel tanks and fuel loading zone moved to internal location on-site. No longer adjacent to frontage road.

PREVIOUS



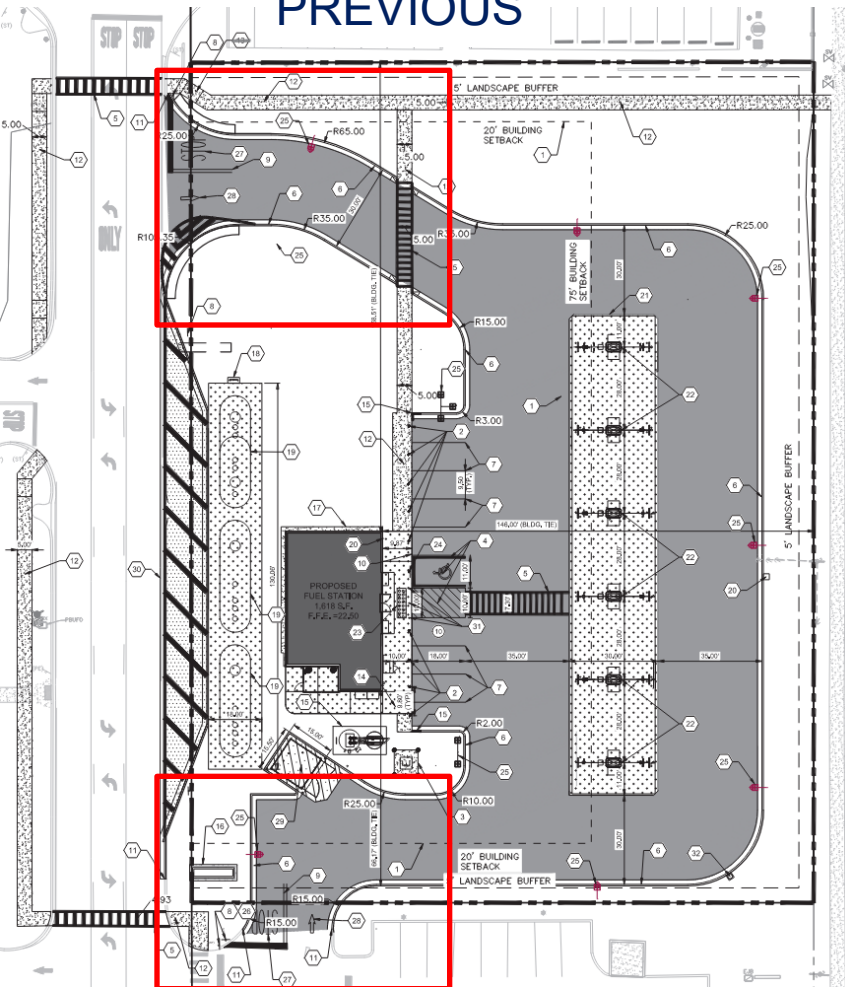
UPDATED



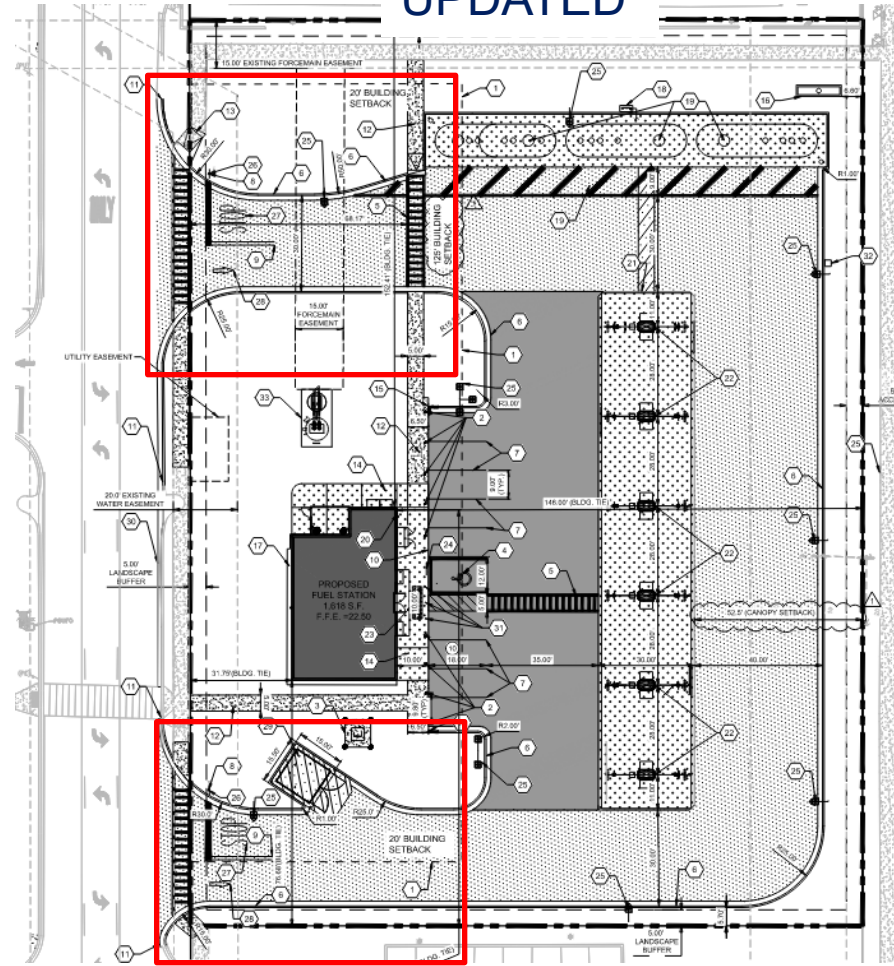
Site Plan Updates

- Driveways reconfigured. New location for South Driveway for wider access to allow for fuel truck movements.

PREVIOUS



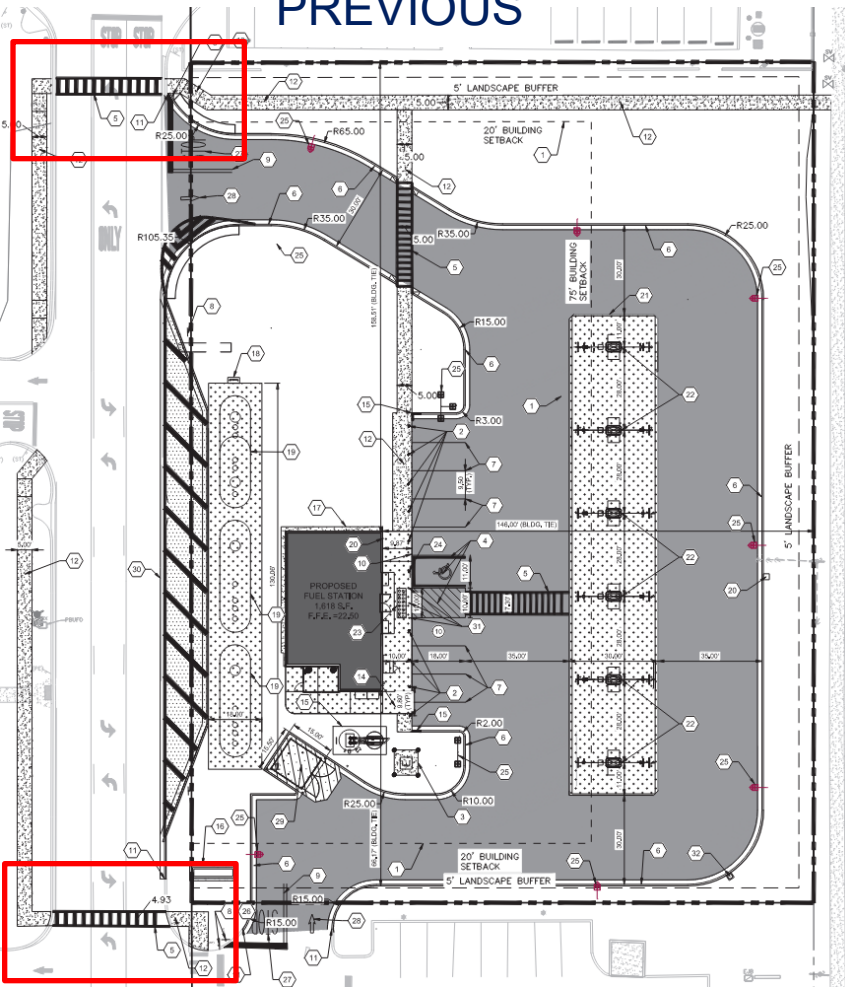
UPDATED



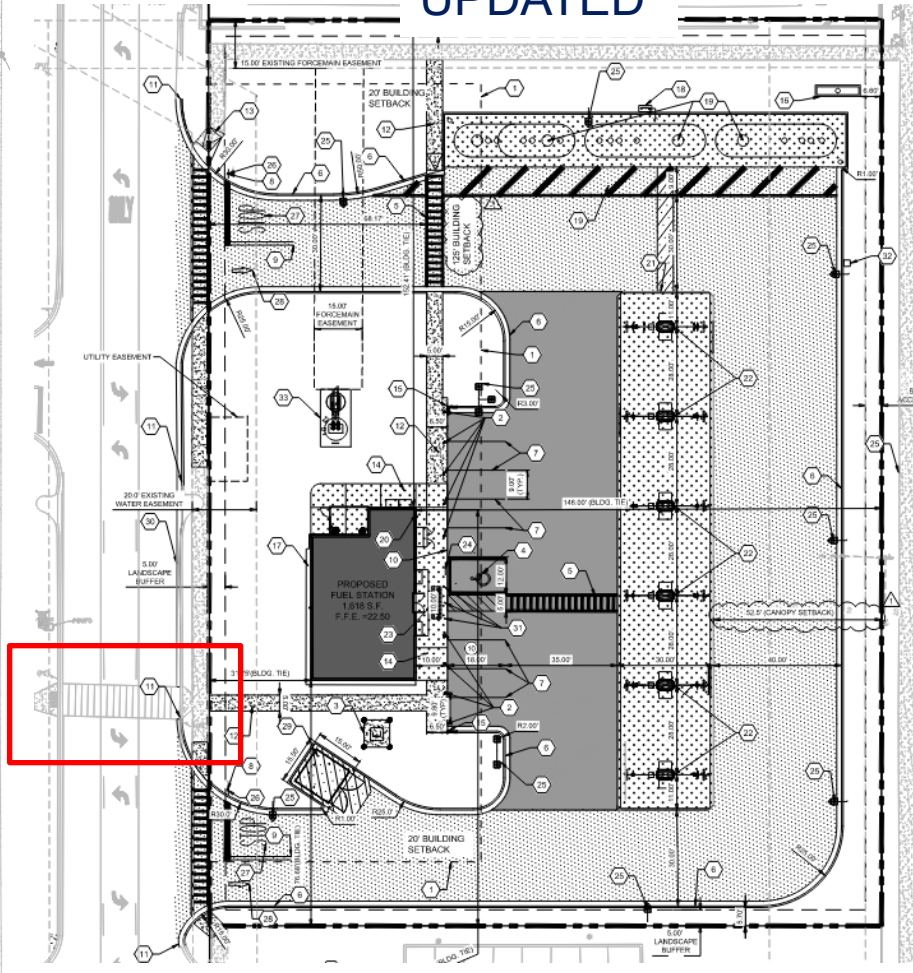
Site Plan Updates

- Pedestrian paths. Existing path and street crossings are maintained with updated layout for safer pedestrian access.

PREVIOUS



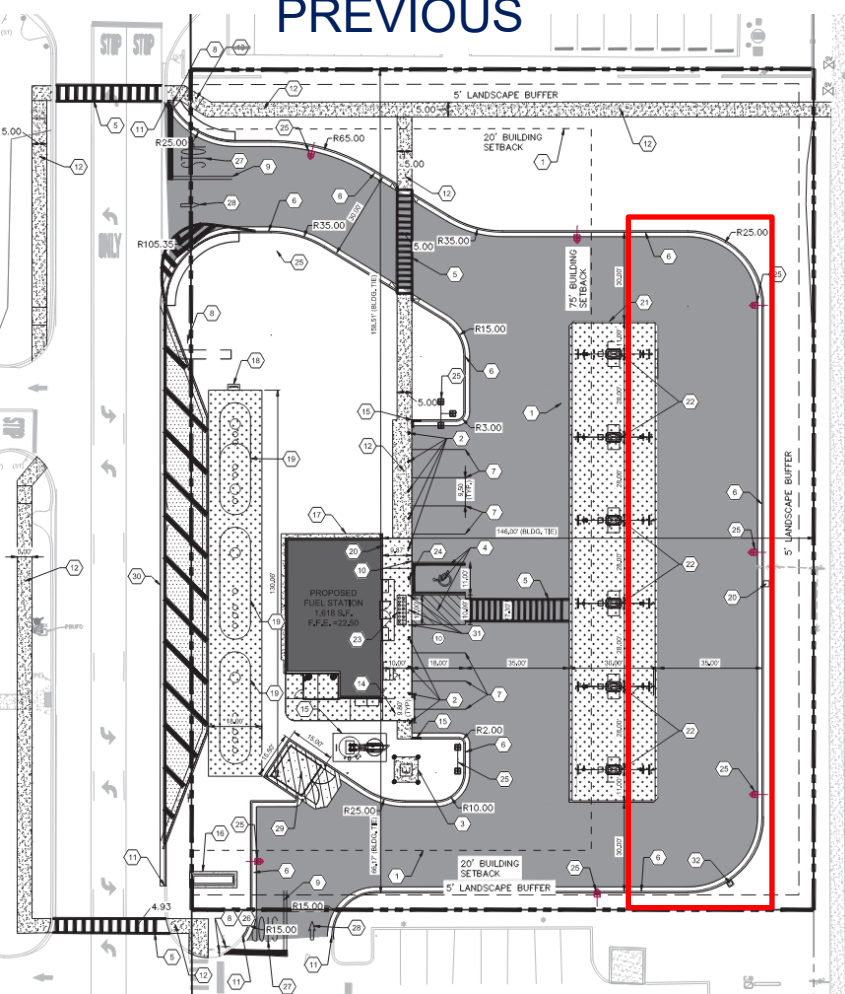
UPDATED



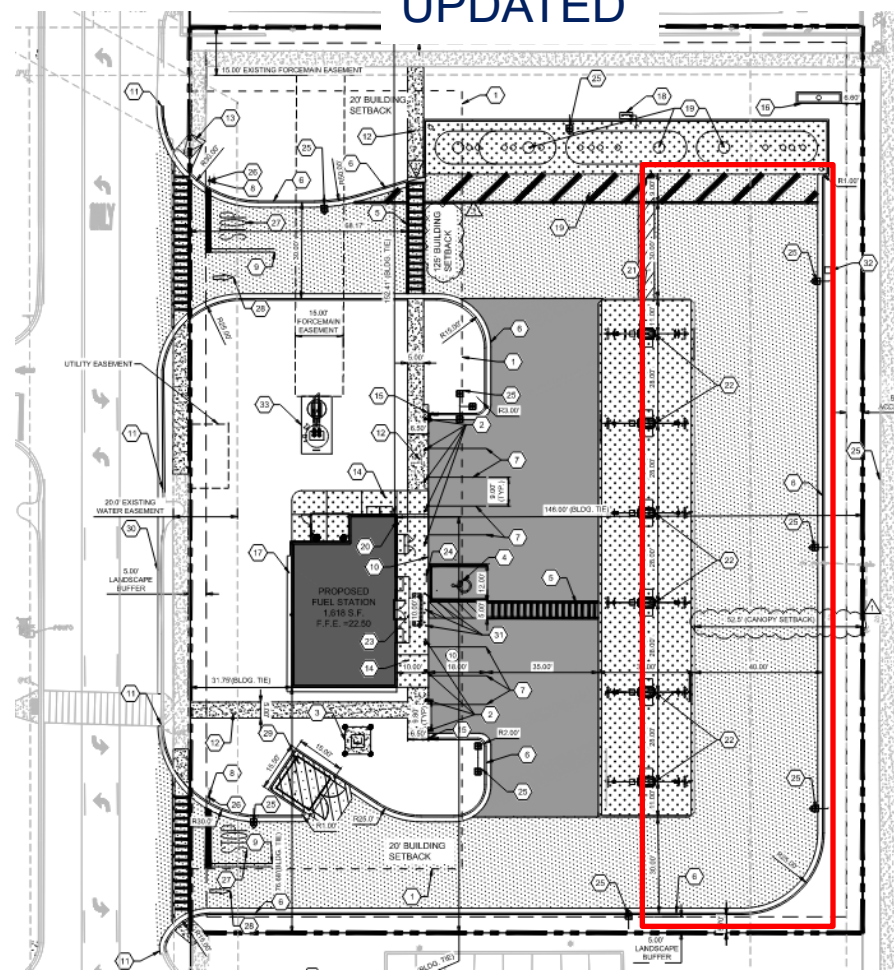
Site Plan Updates

- Drive isle widened from 35.0' to 40.0' for fuel truck maneuverability

PREVIOUS

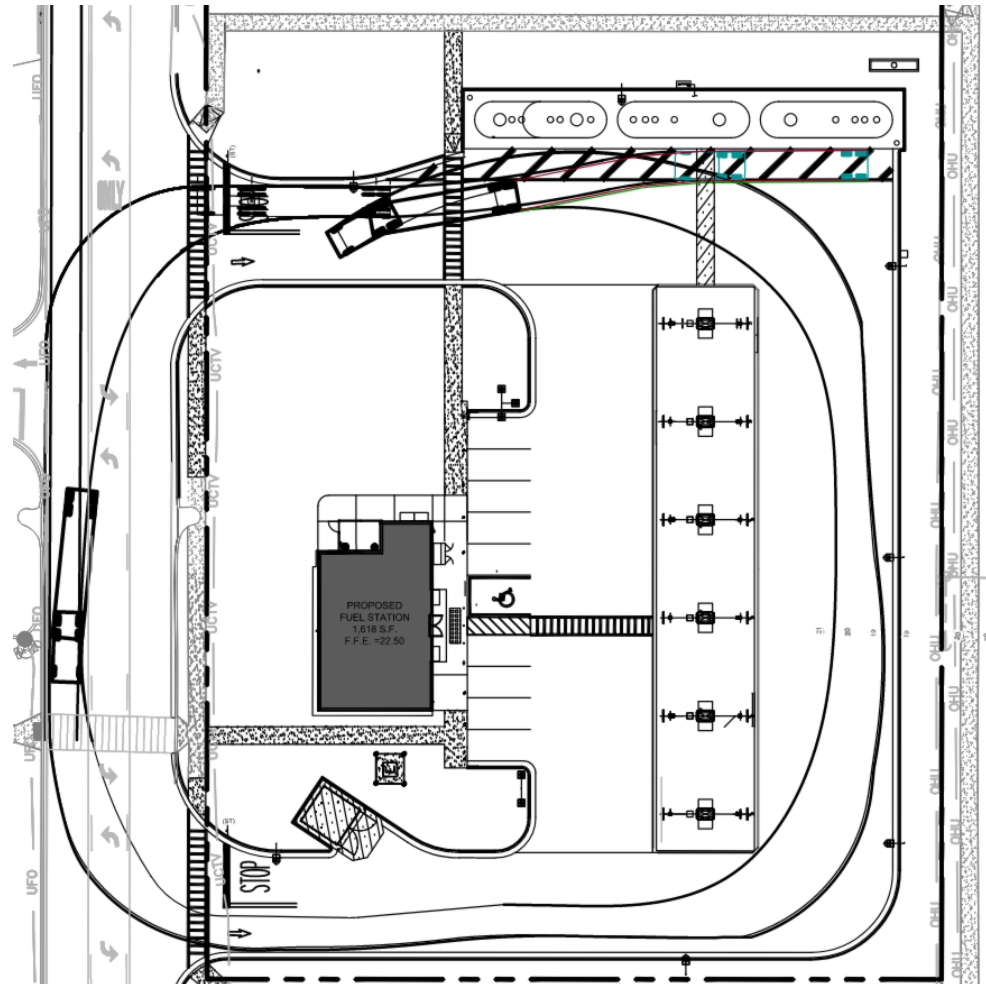


UPDATED



Site Circulation Improved

- The site impacts from relocating the fuel tanks on-site and extending driveways to allow for safe queuing have increased the site footprint to make room for safe circulation on-site.



Setback Request

- Requirement: 125' Frontage Setback
- Proposed Convenience Store is not within Setback, but the Fuel Canopy is.
- Requesting a Canopy Setback of 50.5' along frontage to keep proposed site circulation.



Buffer Request

- Requirement: Existing Natural 20' Buffer enhanced to achieve 80% opacity.
- Requesting a 5' Buffer due to the site layout constraints and precedence in the area.



Buffer Request



Buffer Request



Buffer Request



Buffer Request



Buffer Request



Conclusion

WALMART IS EXCITED TO SERVE THE LOCAL COMMUNITY!

QUESTIONS/COMMENTS?

Please reach out to Ross Lemoine, PE with CPH, LLC @ 813-288-0233 with any follow up questions or concerns



www.cphcorp.com