



Hernando School District

Interlocal Governmental Meeting

Agenda Item # 2. 26-3714

4/22/2026

Title and Board Action Requested

Presentation of the Eastside Elementary School K8 Model

Executive Summary

The Assistant Superintendent of Teaching and Learning and Principal of Eastside Elementary School, on behalf of the Superintendent of Schools, hereby requests the Board to review the informational item on the expansion of Eastside Elementary School to a future K8 school.

My Contact

Gina Michalicka

Assistant Superintendent of Teaching and Learning

352-797-7000

Michalicka_g@hcsb.k12.fl.us

Mike Lastra

Principal of Eastside Elementary School

352-797-7045

Lastra_m@hcsb.k12.fl.us

2023-28 Strategic Focus Area

Priority 1: Student Success

Financial Impact

See attached budget sheet.


If expenditure is not currently budgeted, this will serve as the budget amendment when Board approved. If the agenda item includes the purchase of goods or services, the funds requested are an anticipated amount and may fluctuate depending on such factors as current market conditions, product availability, additional funding sources, and the needs of the District. Should the actual cost exceed the anticipated amount, the Board approves the additional cost, after review by the superintendent, but not in excess of the funds available in the site's approved annual budget.



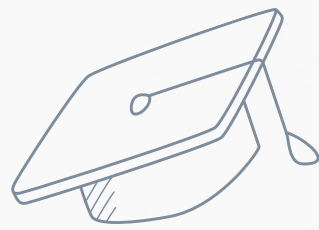
EASTSIDE ACADEMY OF LEADERSHIP & INNOVATION



EXECUTIVE SUMMARY

- Proposes transitioning Eastside Elementary from a PreK-5 to a Pre K-8 school model
 - Implements a phased grade-level expansion:
 - Grade 6 added in 2026-2027
 - Grade 7 added in 2027-2028
 - Grade 8 added in 2028-2029
 - Allows for deliberate planning around staffing, curriculum development, and facility readiness
 - Ensures continuity of high-quality instruction across all grade levels
 - Emphasizes college and career readiness in the middle grades
 - Integrates career exploration, leadership development, and experiential learning
 - Aligns Career and Technical Education (CTE) pathways with FLDOE frameworks
 - Creates a seamless, developmentally appropriate transition from elementary to middle grades
 - Expands opportunities for academic rigor, career awareness, and leadership growth
- 

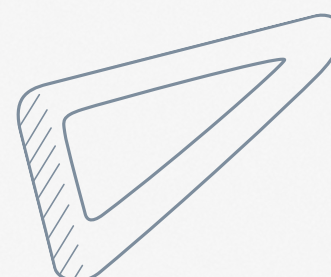
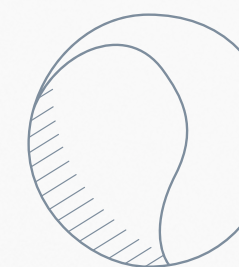




RATIONALE FOR TRANSITION TO A PRE K-8 MODEL

Transitioning Eastside Elementary School to a PreK-8 campus offers several strategic advantages:

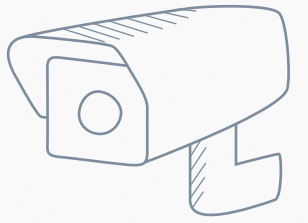
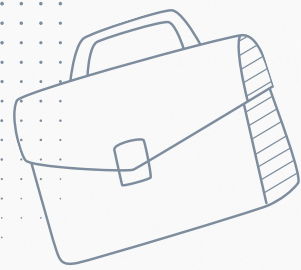
- **Continuity of Instruction and Culture:** Students benefit from consistent expectations, instructional approaches, and relationships during critical developmental years.
- **Improved Academic Outcomes:** Research supports PreK-8 models as effective in reducing transition-related learning loss and improving student engagement.
- **Enhanced College and Career Readiness:** Introducing structured career exploration and CTE experiences earlier allows students to make informed decisions prior to high school.
- **Family and Community Stability:** Families remain within one school community for a longer period, strengthening partnerships and engagement.



WHY EASTSIDE ACADEMY OF LEADERSHIP AND INNOVATION?

- Eastside Academy of Leadership & Innovation is a school of choice that provides students with authentic learning experiences through hands-on instruction and purposeful field experiences
- More than a school, we will be a launchpad for future-ready learners
 - Purpose-built pathways rarely found at the elementary level
 - Real-world learning experiences that mirror middle & high school expectations
 - A strong bridge between curiosity today and career readiness tomorrow

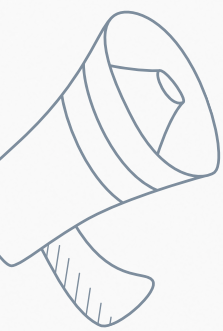


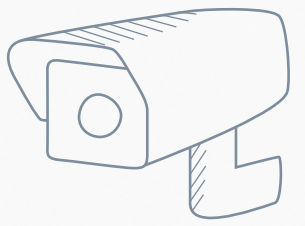


LEADERSHIP & CAREER READINESS SCHOOLWIDE FOCUS

Developing confident leaders from day one: Instruction supports leadership development and early career readiness through meaningful roles and applied learning.

- Student leadership roles embedded across grade levels
- Career exploration through project-based learning and simulations
- Collaboration, communication, and problem-solving as daily practice
- Students learn to lead themselves, lead others, and lead ideas





AGRISCIENCE TECHNOLOGY

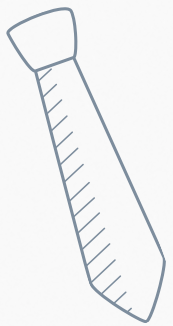
Hands on Learning rooted in real world science: Students apply scientific concepts through authentic investigations and experiences that connect classroom learning to real-world applications.

- Gardening, sustainability, and food systems integrated into instruction
- STEM concepts taught through agriculture-based investigations
- Environmental responsibility and stewardship developed early
- Connects science, math, and leadership through authentic experiences







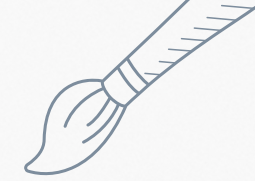
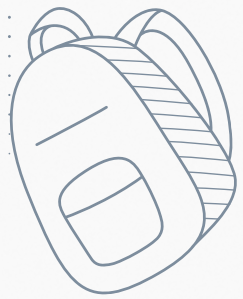
SPACE FLORIDA (TECHNOLOGIES) PATHWAYS



Inspiring the next generation of innovators:
Students explore innovation through hands-on STEM experiences connected to Florida's aerospace and space science industries.

- Introduction to aviation, space, and aerospace engineering concepts
 - Design challenges, simulations, and problem-solving activities
 - Encourages curiosity, creativity, and critical thinking
 - Early exposure to high-demand STEM careers
- 
- 





ELEMENTARY ACADEMY FOCUS

To build career connections through experience, our Elementary will offer opportunities that build independence, responsibility, and collaboration through hands-on learning, including Agriscience, Aerospace, and STEM pathways, in a supportive environment that encourages:

- Real-world Agriscience & environmental learning
- Aerospace & engineering design challenges
- Integrated STEM projects that encourage critical thinking and problem-solving
- Leadership, accountability, and student voice



HCSD STRATEGIC PLAN ALIGNMENT

Student Success (Priority 1)

Hands-on, real-world learning experiences support academic growth, leadership development, and early career readiness for all students.

Talent Management (Priority 2)

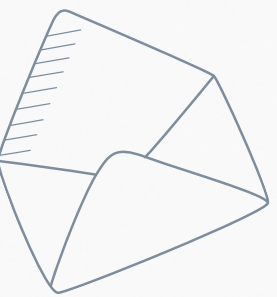
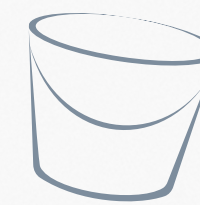
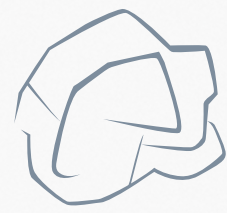
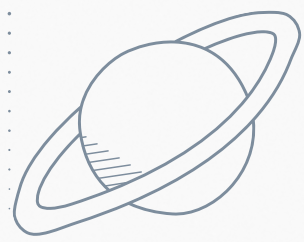
Innovative instructional pathways empower educators to collaborate, grow professionally, and deliver engaging, future-focused instruction.

Safe & Healthy Learning Environment (Priority 3)

Engaging, student-centered learning environments promote belonging, responsibility, and positive school culture.

Community Connection & Responsible Stewardship (Priorities 4 & 5)

Partnerships, purposeful field experiences, and thoughtful use of resources strengthen community ties while supporting long-term planning and fiscal responsibility.

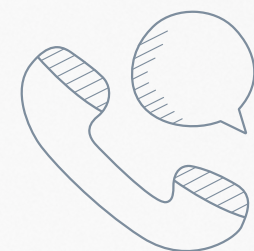
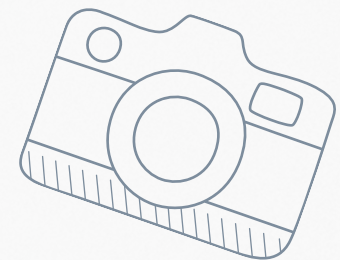


PHASED IMPLEMENTATION PLAN



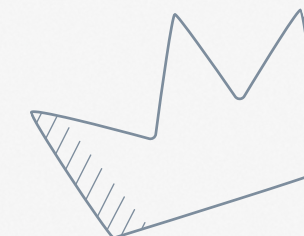
YEAR 1: 2026-2027

- Add Grade 6 (880 total students)
- Hire middle-grades certified teachers as needed
- Launch College and Career Readiness curriculum and initial CTE offerings
- Begin quarterly field experiences aligned to electives and CTE programs



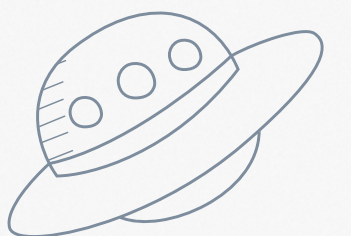
YEAR 2: 2027-2028

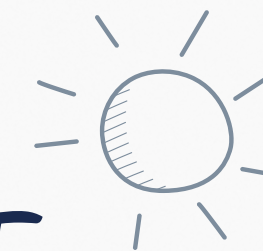
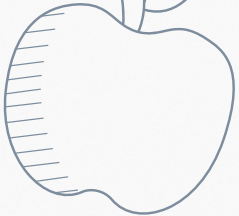
- Add Grade 7 (980 total students)
- Expand CTE pathways and community partnerships
- Continue curriculum refinement and program evaluation
- Field experiences more specific to CTE Pathways chosen.



YEAR 3: 2028-2029

- Add Grade 8 (1080 total students- 1,200 capacity)
- Fully implement PreK-8 model
- Align middle school outcomes with high school academies and pathways
- Field experiences to focus on high school pathways and career options.

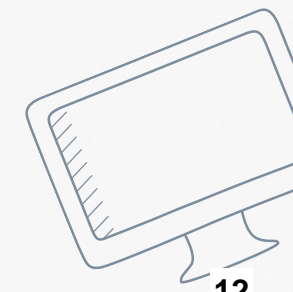
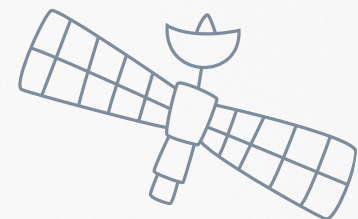
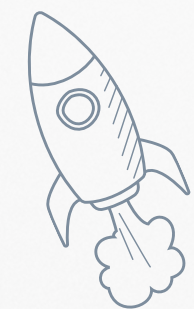




OUTCOMES & IMPACT



- Stronger middle school readiness
- Career-aware students before high school
- Expanded opportunities without changing school identity
- Students are leaders not only in the school but in the community



A. Item Currently Budgeted -													
Account Name		No Financial Impact											
Account Number		Fund		Function		Object		Cost Center		Project		Sub Project	
Original Approved Budget		+ Budget Amendments		- Expenditures / Encumbrances To Date		= Current Available Budget		- Present Request		= Remaining Balance Available			
\$ _____		\$ _____		\$ _____		\$ _____		\$ _____		\$ _____			

Account Name _____													
Account Number		Fund		Function		Object		Cost Center		Project		Sub Project	
Original Approved Budget		+ Budget Amendments		- Expenditures / Encumbrances To Date		= Current Available Budget		- Present Request		= Remaining Balance Available			
\$ _____		\$ _____		\$ _____		\$ _____		\$ _____		\$ _____			

B. Item Currently Not Budgeted -**													
Funding Source		_____											
Account Name		_____											
Account Number		Fund		Function		Object		Cost Center		Project		Sub Project	
Amount \$		_____											

Funding Source		_____											
Account Name		_____											
Account Number		Fund		Function		Object		Cost Center		Project		Sub Project	
Amount \$		_____											

C. History	
Check one:	
Prior Year Budget:	<input type="radio"/>
New for Current Year:	<input type="radio"/>
Prior Year Approved Budget:	\$ _____
Prior Year Actual Spent:	\$ _____

**** WHEN ITEM NOT CURRENTLY BUDGETED IS APPROVED BY THE SCHOOL BOARD, THIS WILL SERVE AS THE BUDGET AMENDMENT****